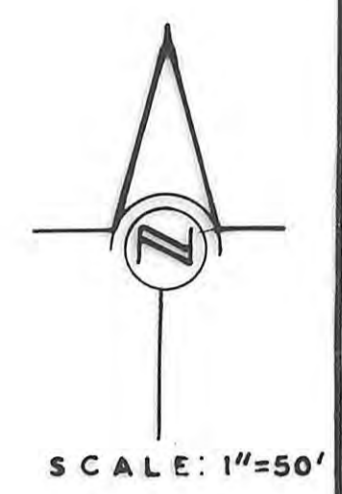
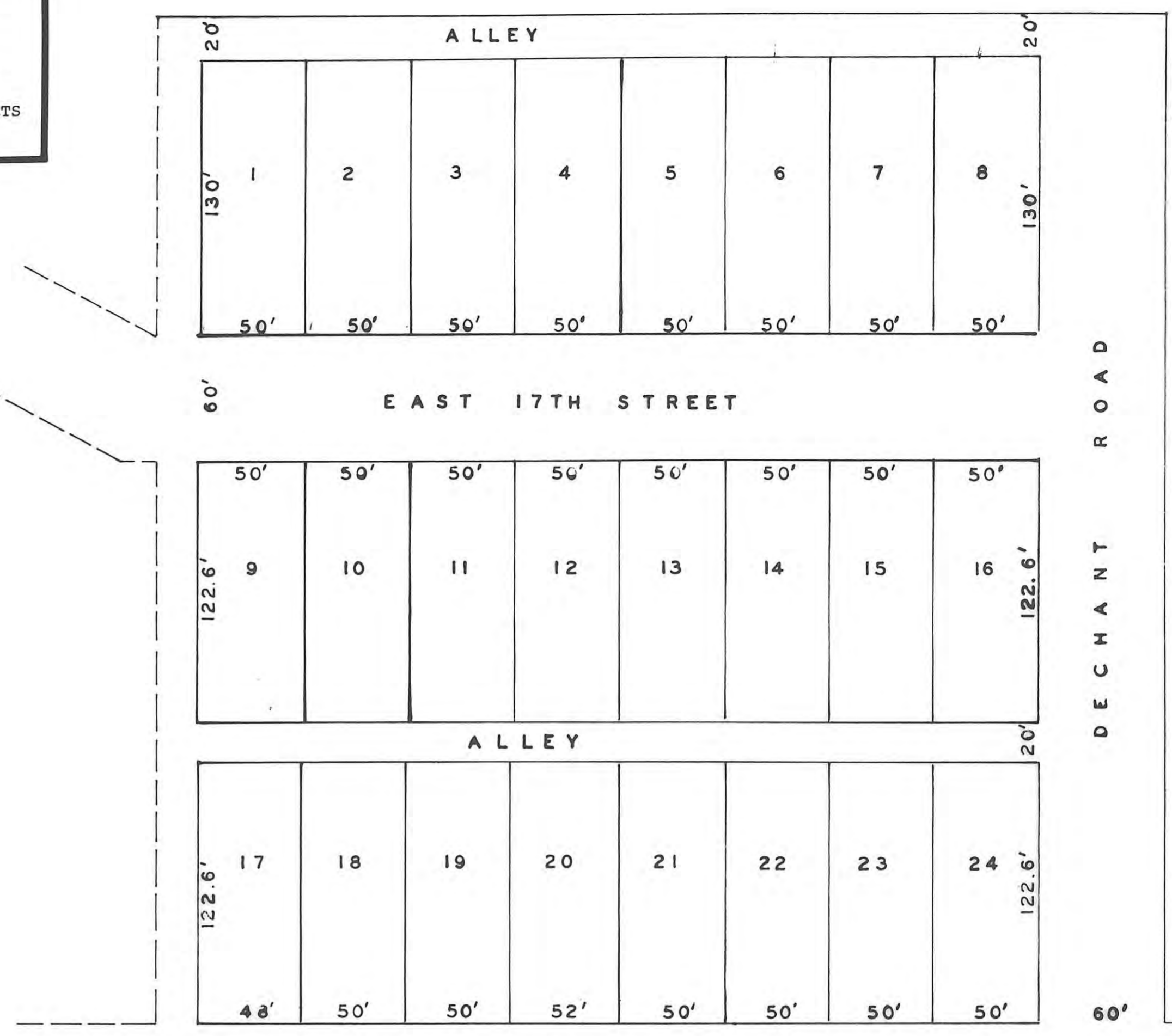


THIS IS A DIRECT PHOTOGRAPHIC REPRODUCTION OF THE OFFICIAL INSTRUMENT (RECORDED PLAT).  
 THIS REPRODUCTION WAS MADE BY BUCHER & WILLIS CONSULTING ENGINEERS, PLANNERS & ARCHITECTS IN JUNE 1979



APPROVED BY HAYS CITY PLANNING COMMISSION  
 MARCH 19, 1956

*P. F. Felten*  
 P. F. FELTEN, CHAIRMAN

I hereby certify that this plat was approved by the Governing Body of the City of Hays this 26th day of March, 1956.

*City Clerk*  
 City Clerk

HAROLD A. ROTHGEB  
 ARCHITECTURAL & ENGINEERING SERVICE  
 HAYS KANSAS

I CERTIFY THIS SURVEY TO BE TRUE AND CORRECT.

*Harold A. Rothgeb*  
 HAROLD A. ROTHGEB

MARCH 1, 1956



SCH WALLER - DECHANT  
 SECOND ADDITION

TO  
 THE CITY OF HAYS, KANSAS

STATE OF KANSAS  
 ELLIS COUNTY  
 This instrument was filed for record

MAR 28 1956  
 1:00 P.M. recorded in  
 2 of Plat  
 Fees 2.40  
 5.40  
 Register of Deeds

For Dedication See  
 Book 150 of D&L page 600