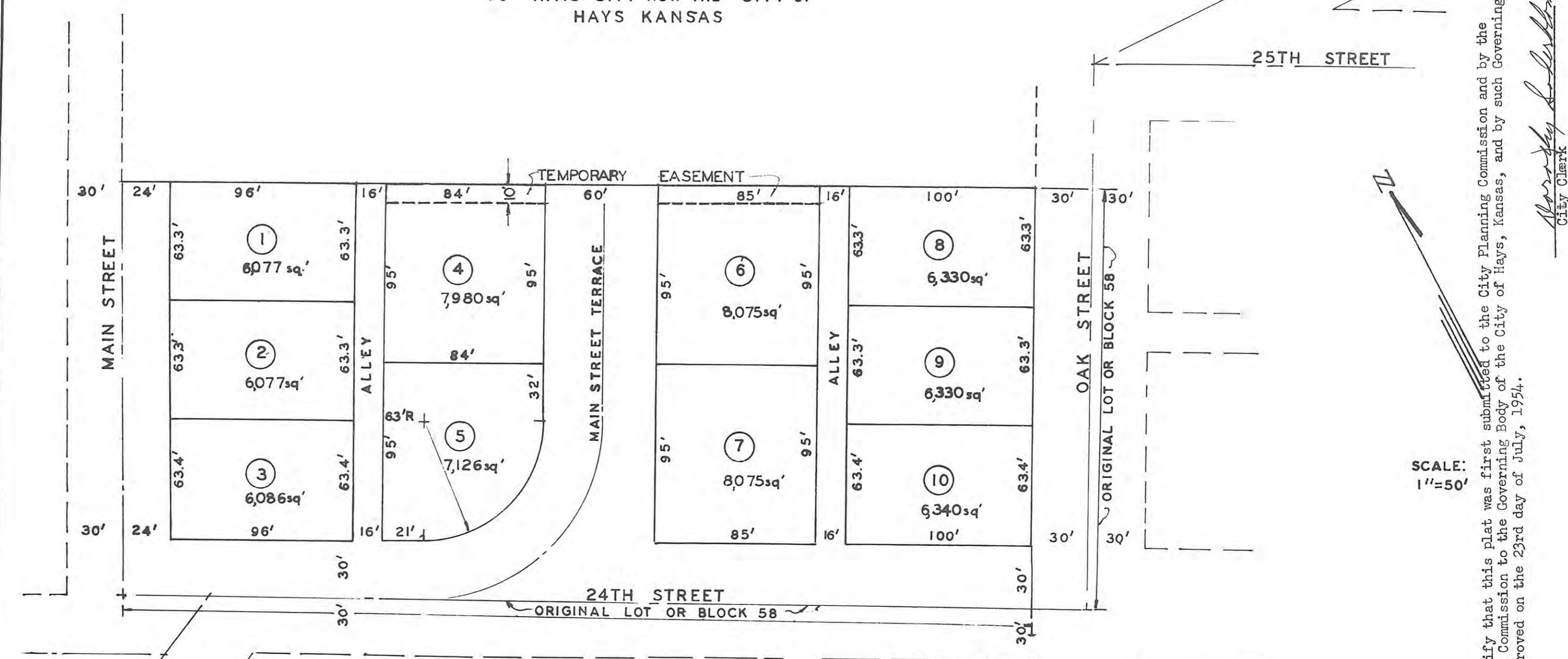


For Dedication See Bk 1320 p. 411

# SCHWALLER-DECHANT ADDITION

BEING ALL OF LOT OR BLOCK 58  
OF LEBOLD ALLEN & CO. ADDITION  
TO HAYS CITY NOW THE CITY OF  
HAYS KANSAS



I hereby certify that this plat was first submitted to the City Planning Commission and by the City Planning Commission to the Governing Body of the City of Hays, Kansas, and by such Governing Body duly approved on the 23rd day of July, 1954.

*Harold A. Rothgeb*  
City Clerk

SCALE:  
1" = 50'

I certify this survey  
to be true and correct  
*Harold A. Rothgeb*  
HAROLD A. ROTHGEB  
April 28, 1954.



STATE OF KANSAS }  
ELLIS COUNTY }  
This instrument was filed for record  
AUG 4 - 1954  
4:00 o'clock P. M. recorded in  
2 of 1954 Page 35  
Fees 2.00 Register of Deeds

HAROLD A. ROTHGEB  
ARCHITECTURAL & ENGINEERING  
SERVICE  
HAYS KANSAS

THIS IS A DIRECT PHOTOGRAPHIC REPRODUCTION OF THE OFFICIAL INSTRUMENT (RECORDED PLAT).  
THIS REPRODUCTION WAS MADE BY BUCHER & WILLIS, CONSULTING ENGINEERS, PLANNERS &  
ARCHITECTS IN JUNE 1979