

REPLAT OF BLOCK 2 OF SEVEN HILLS THIRD ADDITION HAYS, KANSAS

LEGAL DESCRIPTION:

A tract of land in the South Half (S 1/2) of the Northwest Quarter (NW 1/4) of Section 28, Township 13 South, Range 18 West of the Sixth Principle Meridian in Ellis County, Kansas, more particularly described as follows:

Commencing at the Southwest corner of the Northwest Quarter (NW 1/4) of Section 28, Township 13 South, Range 18 West; THENCE on an assumed bearing of N 0°00'00" E along the West line of said Northwest Quarter (NW 1/4), a distance of 664.37 feet; THENCE N 89°08'22" E, a distance of 50.00 feet to the point of beginning; THENCE continuing on the last described course, a distance of 878.00 feet; THENCE N 0°00'00" E, a distance of 135.87 feet; THENCE on a curve to the left having a radius of 640.00 feet, an arc distance of 135.60 feet; THENCE tangent to said curve, N 12°08'21" W, a distance of 9.54 feet; THENCE S 89°08'22" W, a distance of 861.68 feet; THENCE S 0°00'00" W, a distance of 280.02 feet to the point of beginning and also referred to as Block 2 of Seven Hills Third Addition to the City of Hays, Kansas. Said tract contains 3.626 acres, more or less.

EASEMENTS:

Easements are hereby dedicated for public use, as utility easement right-of-way, which are shown as lying between the dashed lines in widths indicated and as set forth on this plat, and said easements may be employed for the purpose of installing, repairing and maintaining gas lines, electric lines, telephone lines, and all other forms and types of public utilities, new or hereafter used, by the public over, under and along the strips marked "Utility Esmt."

OWNER'S CERTIFICATE:

Know all men by these presents, that we the undersigned property owners of the land above described have caused the same to be surveyed and platted into lots, blocks, streets, alleys and easements, the same to be known as Replat of Block 2 of Seven Hills Third Addition to the City of Hays, in Ellis County, Kansas. The easements are hereby granted to the public for the purpose of constructing, operating, maintaining and repairing all public utilities.

VAN DOREN DEVELOPMENT CORP

By David A. Van Doren
David A. Van Doren
President and General Manager

APPROVALS:

This plat has been submitted to and approved by the Hays-Ellis County Planning Commission this 19th day of March, 1979.

Robert Nicholson Secretary
Marquet E. Smith Chairman

The dedication shown on this plat is accepted by the County Commission of Ellis County, Kansas this 21st day of May, 1979.

Attest: Ellis County, Kansas

Emery J. Rome County Clerk
Eugene Schaeffer Chairman

The dedication shown on this plat is accepted by the City Commission of the City of Hays, Kansas this 26th day of April, 1979.

Attest: City of Hays, Kansas

Donna Soderstrom City Clerk
Daniel S. Rupp Mayor

RECORDED:

State of Kansas, County of Ellis, ss

This is to certify that this instrument was filed for record in the Register of Deeds Office on the 21 day of May, 1979, in Booklet Page 349 4PM - 720.00

Virginia Herzog Register of Deeds
Roger Ann Rupp Deputy
Plat & Dedication Sub 293 p 741
Resolution Sub 293 p 751

NOTARY CERTIFICATE:

State of Kansas, County of Ellis, ss

Be it remembered that on this 13th day of March, 1979 before me, a notary public in and for said County and State, came David A. Van Doren, President and General Manager of Van Doren Development Corporation, to me personally known to be the same person who executed the foregoing instrument of writing and duly acknowledged the execution of same. In testimony whereof, I have hereunto set my hand and affixed my notarial seal the day and year above written.

My Commission Expires 1 Feb 1983

Donald R. Rupp
Notary Public

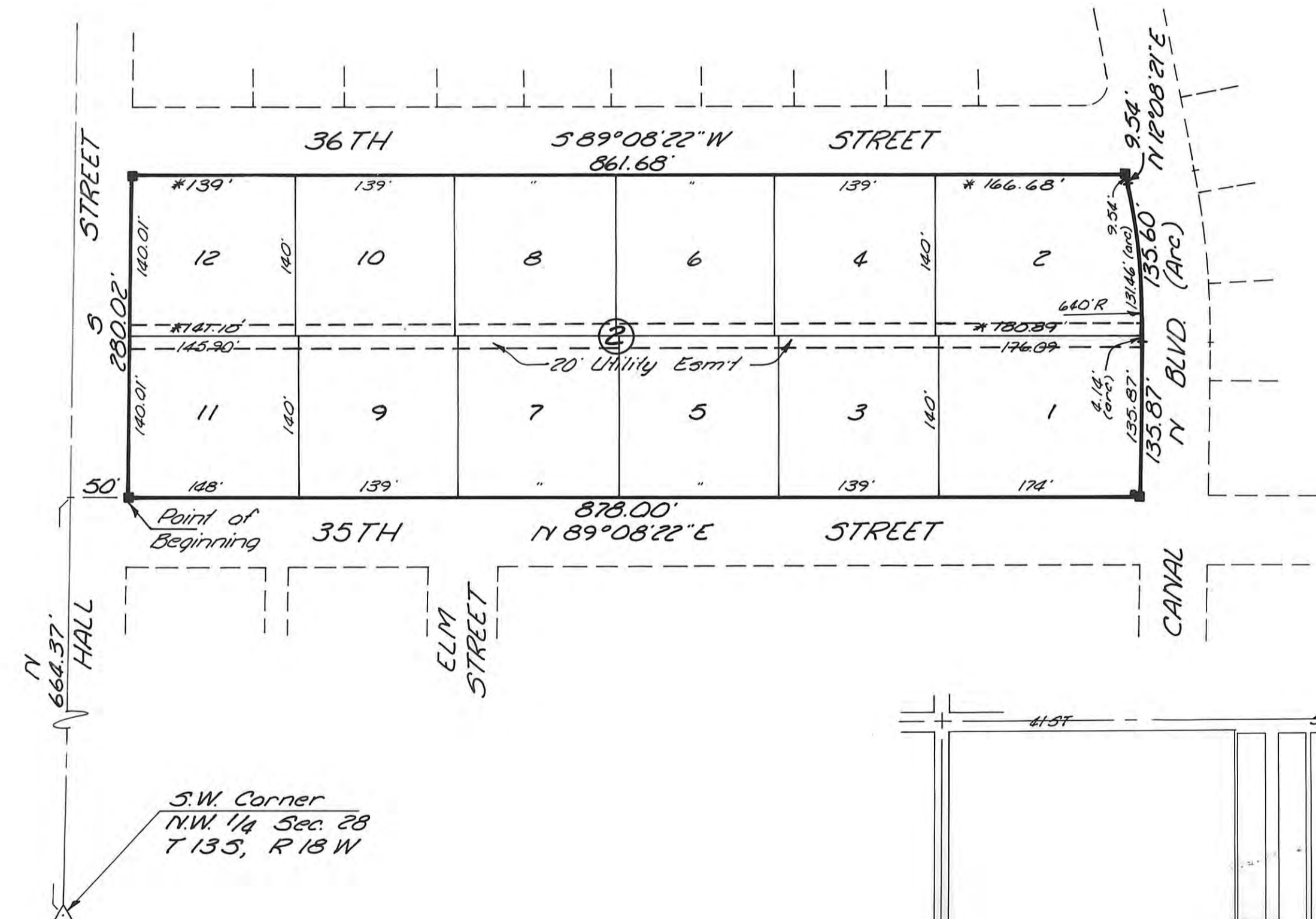
SURVEYOR'S CERTIFICATE:

I, James R. Flemons, a licensed professional engineer in the State of Kansas, do hereby certify this plat to be true and correct to the best of my knowledge and that all iron bars as shown have been accurately set. Survey completed in March 1979.

James R. Flemons
James R. Flemons



PREPARED BY
BUCHER & WILLIS
CONSULTING ENGINEERS, PLANNERS & ARCHITECTS



S.W. Corner
NW 1/4 Sec 28
T 13S, R 18W

LEGEND

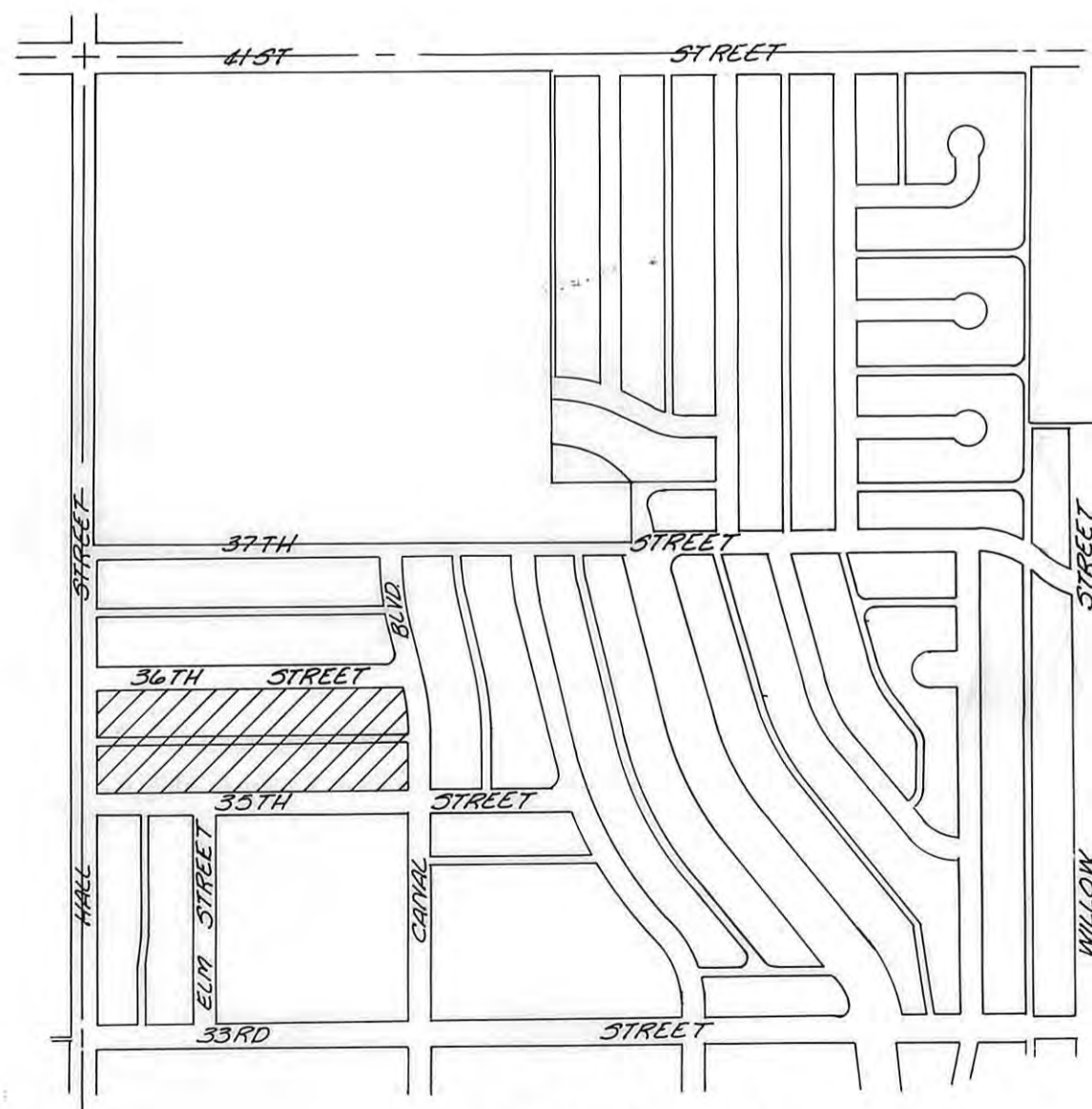
- 1/2" Rebar Found
- △ Section Corner

* Dimensions changed as shown Sept 5, 1979 at the request of Van Doren Development Corp.

VAN DOREN DEVELOPMENT CORP

By David A. Van Doren
David A. Van Doren
President and General Manager

James R. Flemons
James R. Flemons, P.E.



LOCATION MAP

