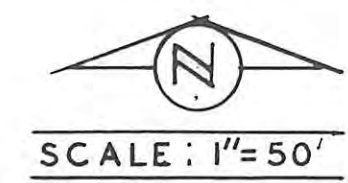
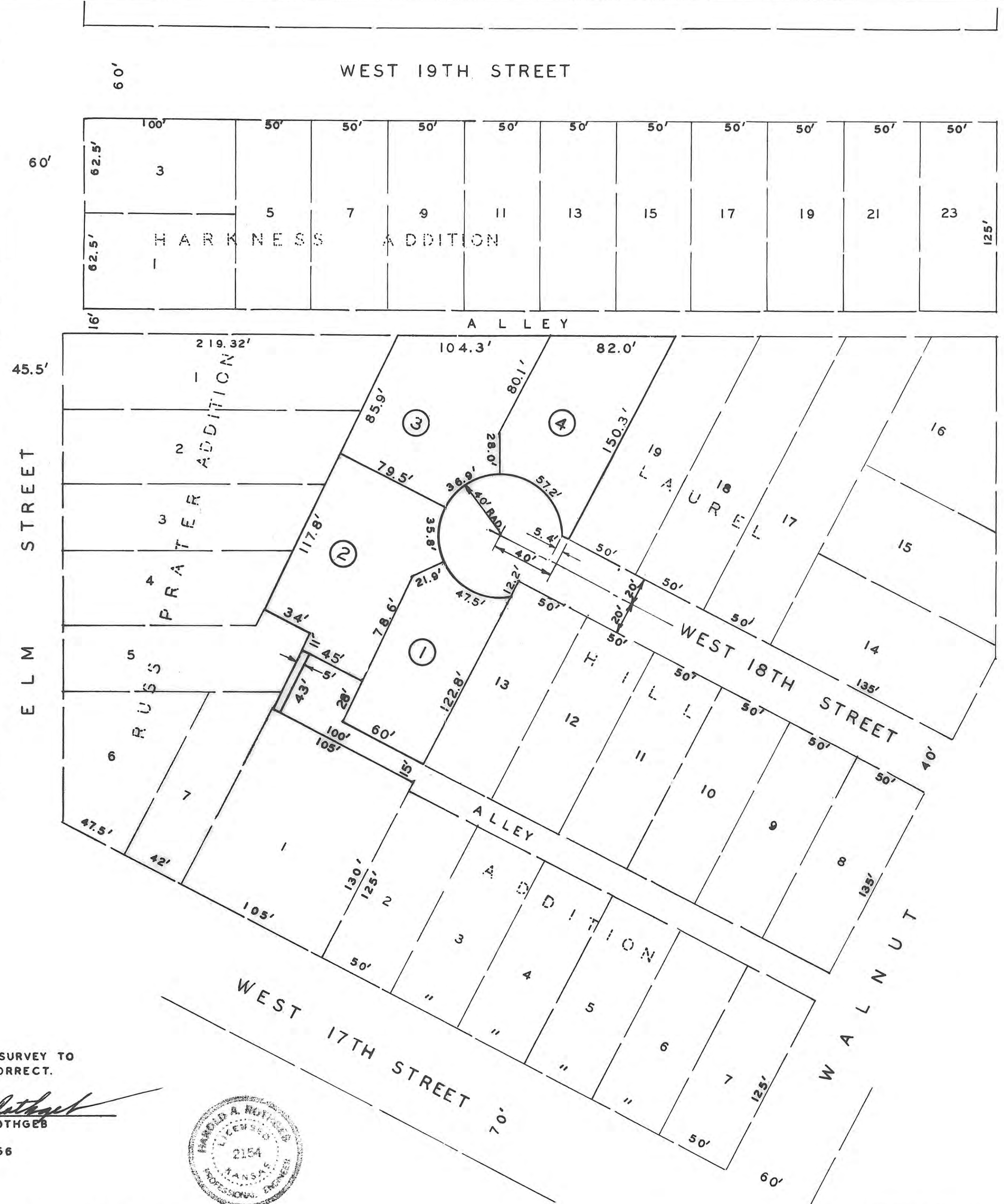


THIS IS A DIRECT PHOTOGRAPHIC REPRODUCTION OF THE OFFICIAL INSTRUMENT (RECORDED PLAT).
 THIS REPRODUCTION WAS MADE BY BUCHER & WILLIS CONSULTING ENGINEERS, PLANNERS & ARCHITECTS IN JUNE 1979



SHADE ADDITION TO THE CITY OF HAYS, KANSAS



NOTE: DIMENSIONS SHOWN ON 40' RADIUS CURVE ARE CHORD DIMENSIONS AND ARE NOT ARC DIMENSIONS.

STATE OF KANSAS
 ELLIS COUNTY
 This instrument was filed for record

JUL 25 1956

2:30 o'clock P.M. recorded in
 of _____ page _____
 Fees \$12.00
 Register of Deeds

Transfer 50
 3.50

APPROVED BY: HAYS CITY
 PLANNING COMMISSION

P.F. Felten
 P. F. FELTEN, CHAIRMAN
 21 MAY 1956

I CERTIFY THIS SURVEY TO
 BE TRUE AND CORRECT.

Harold A. Rothgeb
 HAROLD A. ROTHGEB

APRIL 26, 1956



HAROLD A. ROTHGEB
 ARCHITECTURAL & ENGINEERING
 SERVICE
 HAYS KANSAS

I hereby certify that this plat was approved by the governing body of the City of Hays, Kansas, this 16th day of July, 1956.

Joseph S. Seaborn
 City Clerk