

THIS IS A DIRECT PHOTOGRAPHIC REPRODUCTION OF THE OFFICIAL INSTRUMENT (RECORDED PLAT).

THIS REPRODUCTION WAS MADE BY BUCHER & WILLIS CONSULTING ENGINEERS, PLANNERS & ARCHITECTS IN AUGUST, 1979.

PLAT OF SKYLINE SIXTH ADDITION HAYS, KANSAS

LEGAL DESCRIPTION

A tract of land in the Northeast Quarter of Section 28, Township 13 South, Range 18 West of the Sixth Principal Meridian, Ellis County, Kansas, more particularly described as follows:

BEGINNING at a point on the West line of the Northeast Quarter (NE $\frac{1}{4}$) of said Section 28, said point being 1,320.00 feet North of the Southwest corner of said Northeast Quarter; THENCE on an assumed bearing of N 1°10'09" E along the West line of said Northeast Quarter, a distance of 306.54 feet; THENCE S 89°59'57" E, a distance of 1,992.73 feet; THENCE S 0°20'07" E, a distance of 277.00 feet; THENCE S 90°00'00" W, a distance of 1,872.38 feet; THENCE S 1°10'09" W a distance of 113.28 feet; THENCE in a Northwesterly direction on a curve to the right having a radius of 180 feet, the initial tangent of which has a bearing of N 70°32'01" W, an arc distance of 76.51 feet; THENCE in a Northwesterly direction on a curve to the left having a radius of 266 feet, the terminal tangent of which has a bearing of N 62°28'34" W, an arc distance of 75.65 feet to the point of beginning. Said tract contains 12.9105 acres, more or less.

STREETS, ALLEYS AND EASEMENTS:

Streets, Alleys and Avenues as shown on this plat and not heretofore dedicated to and for public use are hereby so dedicated.

Easements are hereby dedicated for public use, as utility easement right-of-way which are shown as lying between the dashed lines in widths indicated and as set forth on this plat. Said easements may be employed for the purpose of installing, repairing and maintaining gas lines, electric lines, telephone lines, sewer lines, water lines and all other forms and types of public utilities, new or hereafter used, by the public, over, under and along the strips marked "Utility Esm'ts".

OWNERS CERTIFICATE

Know all men by these presents, that we, the undersigned property owners of the land above described, have caused the same to be surveyed and platted into lots, blocks, streets, alleys and easements, the same to be known as the Skyline Sixth Addition to the City of Hays, in Ellis County, Kansas. The Streets, Avenues and Alleys are hereby dedicated to and for the use of the public, and easements as indicated on the accompanying plat are hereby granted to the public for the purpose of constructing, operating, maintaining and repairing all public utilities.

Fred E. Bieker
Fred E. Bieker

Mary Bieker
Mary Bieker

NOTARY CERTIFICATE:

State of Kansas, County of Ellis, ss

Be it remembered that on this 11 day of March, 1977, before me, a notary public in and for said County and State, came Fred E. Bieker and Mary Bieker to me personally known to be the same persons who executed the foregoing instrument of writing and duly acknowledged the execution of same. In testimony whereof, I have hereunto set my hand and affixed my notarial seal the day and year above written.

William J. Young
Notary Public

My Commission Expires: _____

APPROVALS:

This plat of SKYLINE SIXTH ADDITION has been submitted to and approved by the Hays-Ellis County Planning Commission this 11 day of Feb, 1977

William J. Young
Chairman

W. Margaret E. Smith
Secretary

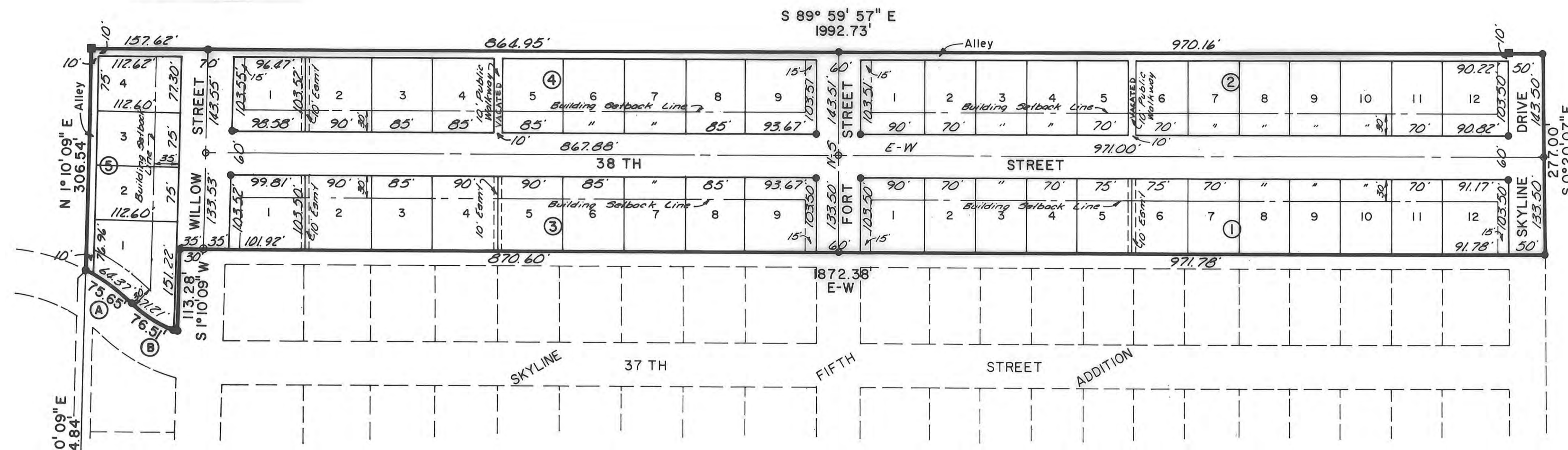
The dedication shown on this plat is accepted by the City Commission of the City of Hays, Kansas, this 11 day of February, 1977.

Attest:

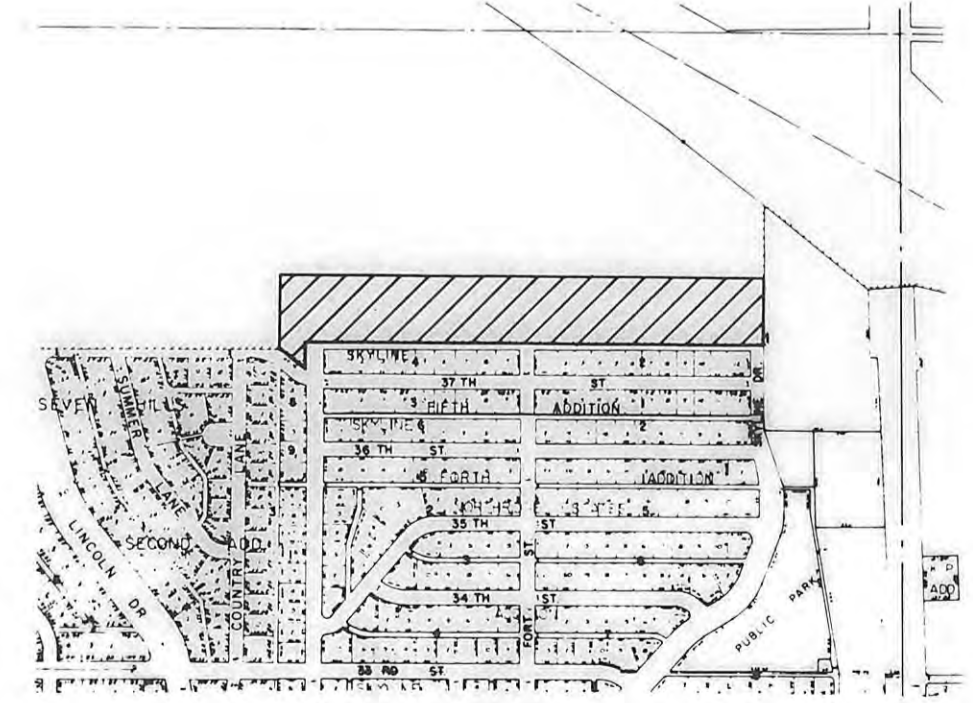
James Ray Flemons
City Clerk

John E. Tully
Mayor

ORDINANCE NO. 281
AN ORDINANCE RELATIVE TO THE PLAT OF A TRACT OF LAND LOCATED IN THE NORTHEAST QUARTER OF SECTION 28, TOWNSHIP 13 SOUTH, RANGE 18 WEST OF THE SIXTH PRINCIPAL MERIDIAN, ELLIS COUNTY, KANSAS, MORE PARTICULARLY DESCRIBED AS FOLLOWS:
TO BE KNOWN AS THE SKYLINE SIXTH ADDITION TO THE CITY OF HAYS, KANSAS.
SECTION 1. The Ordinance shall be effective upon its passage by the City Commission of the City of Hays, Kansas, on the 11th day of February, 1977.
SECTION 2. The Ordinance shall be effective upon publication in the Hays Daily News on the 11th day of February, 1977.
PASSED AND ADOPTED on the 11th day of February, 1977.
RECORDED
JAN 11 1977
CITY CLERK

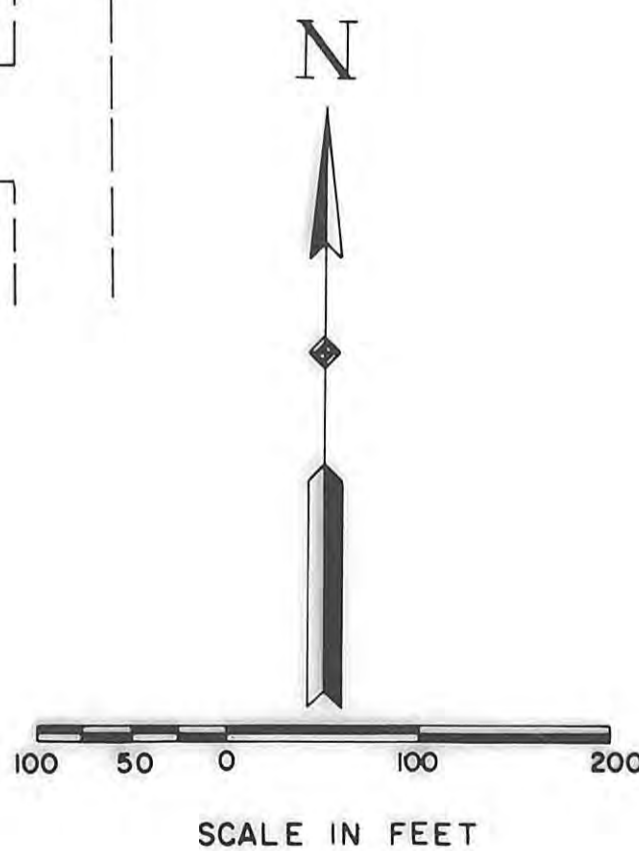


CURVE DATA				
CURVE	Δ	R	T	Lc
(A)	16°17'42"	266.00'	38.08'	75.65'
(B)	24°21'09"	180.00'	38.84'	76.51'



LOCATION MAP

LEGEND
 ▲ Quarter Section Corner
 ■ 1/2" Rebar Found
 ● 1/2" Rebar Set



S.W. Corner of the NE 1/4 Section 28, T13S, R18W

Ord # 3127 Bk: 398 Pg: 56
 Vacate walkways
 Lot 4-5 Blk 4
 Lot 5-6 Blk 2

RECORDED:
 State of Kansas, County of Ellis, ss
 This is to certify that this instrument was filed for record in the Register of Deeds Office on the 11 day of March, 1977, in Book 28 Plats, Page 46.
Virginia Herzog
 Register of Deeds
Rose Ann Repp
 Deputy

SURVEYOR'S CERTIFICATE:
 I, James Ray Flemons, a licensed professional engineer in the State of Kansas, do hereby certify this plat to be true and correct to the best of my knowledge; and that all iron bars as shown have been accurately set. Said survey was completed in February, 1977.
James Ray Flemons
 James Ray Flemons, P.E.
 Hays, Kansas



PREPARED BY
BUCHER & WILLIS
 CONSULTING ENGINEERS, PLANNERS & ARCHITECTS
 SALINA, KANSAS KANSAS CITY, MO