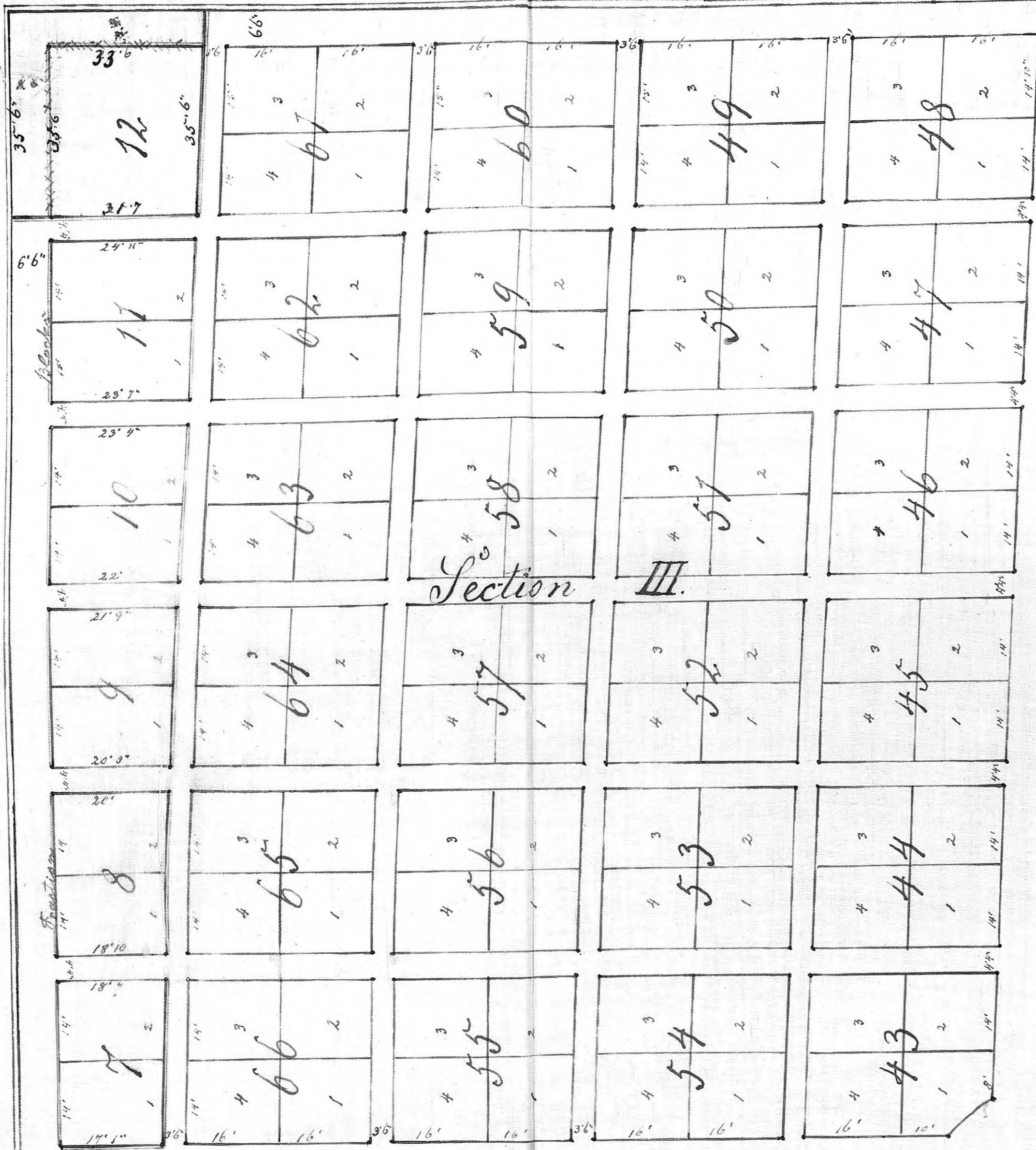


St. Catherine

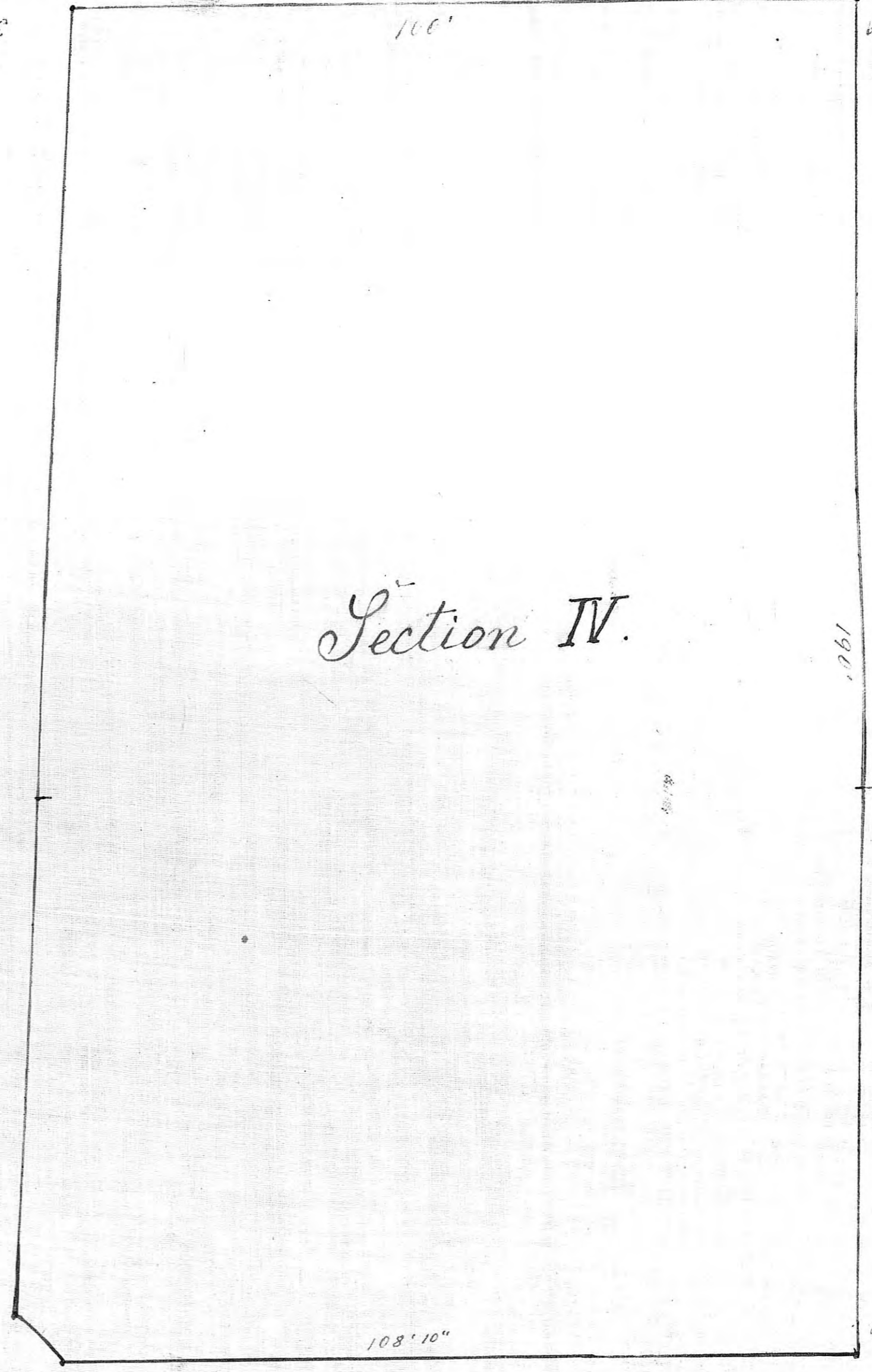
West

Cemetery

Catherine Kansas.



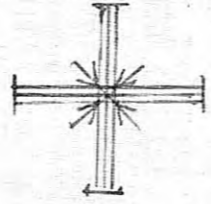
Section III



Section IV

South.

North.



Explanation:

Section I.

Contains full blocks No. 1 to 24.

Section II.

Blocks No. 25 to 42.

Section III.

Blocks No. 43 to 66.

This blocks are from South to North 32 feet, and East to West 28 feet.

Each Block contains 4 Lots numbered 1, 2, 3, 4 - 14 X 16 feet.

Section I, has fraction blocks, No. 1, 2, 3, 4, 5, and 6.

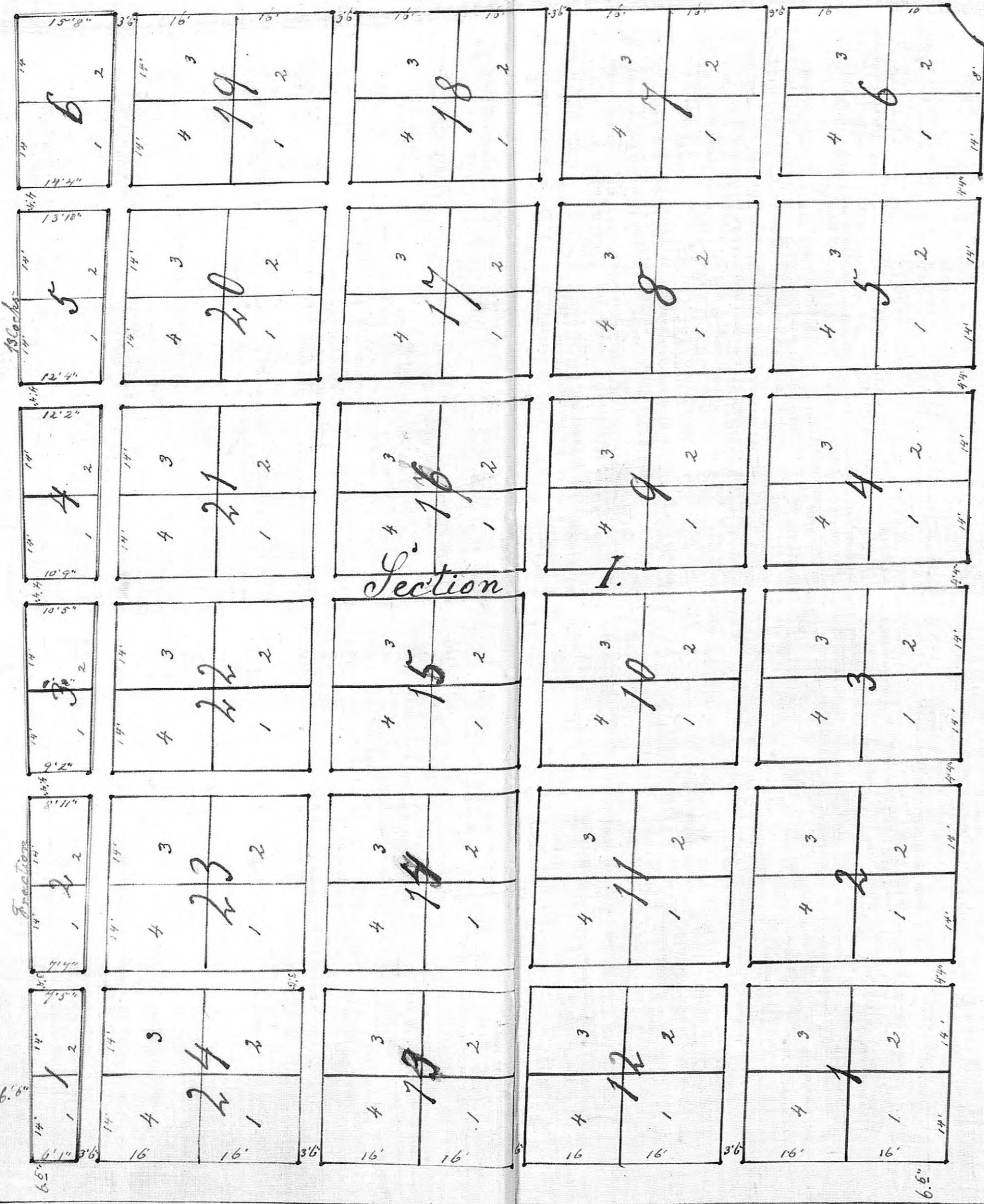
Section II, fraction blocks, No. 13, 14, 15, 16, 17 and 18.

Section III, fraction blocks, No. 7, 8, 9, 10, 11 and 12.

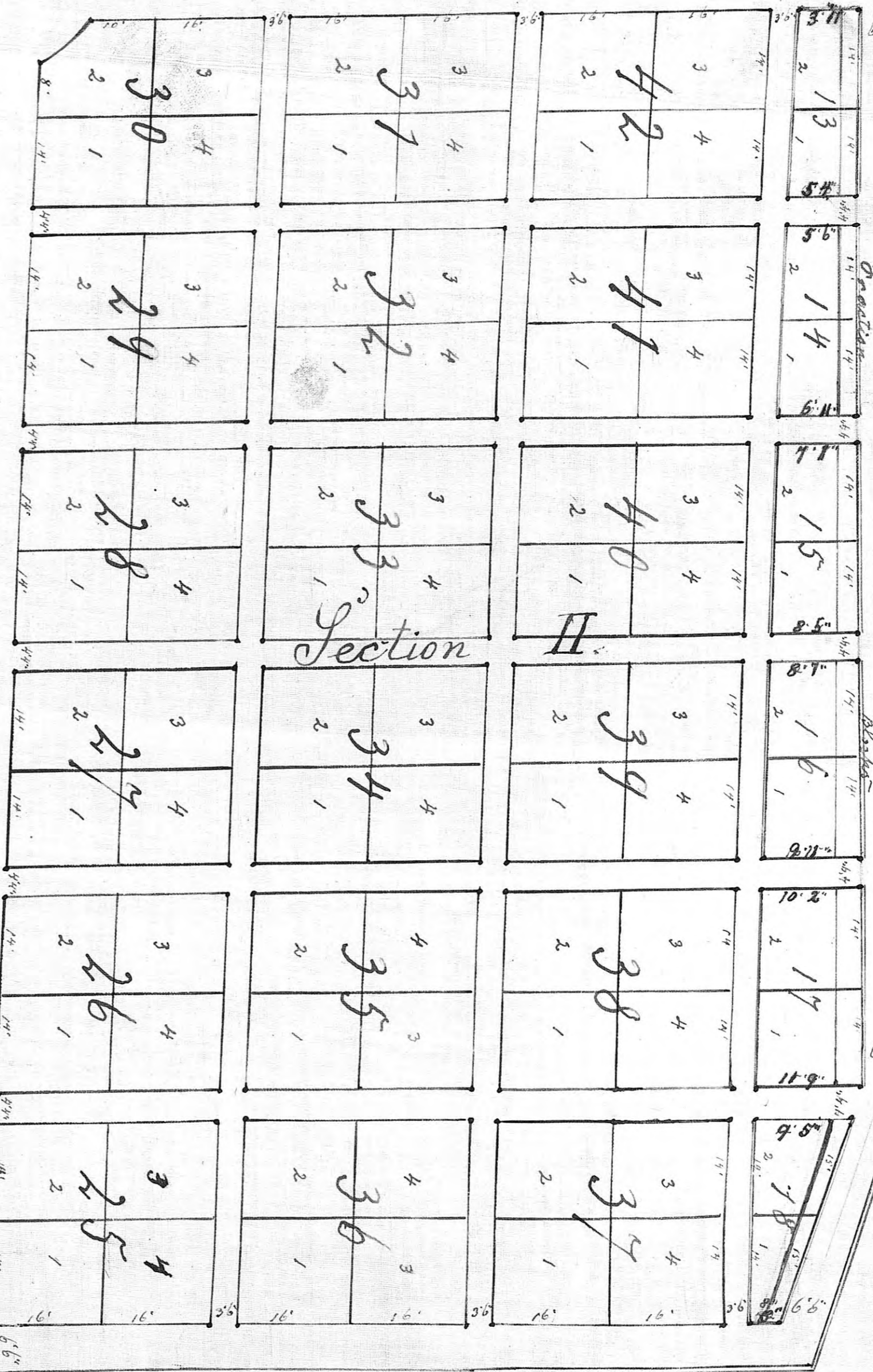
The length and wide on this fraction blocks is indicated in feet and inches by numbers.

Section IV.

Old Cemetery.



Section I



Section II

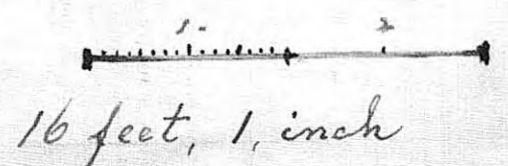
Explanation:

The main Street running from East to West and North to South is 30 feet wide

The Alleys between the Blocks running East and West are 3 feet and 6 inches, and North and South, 4 feet and 4 inches wide.

The Alley all around is 6 feet and 6 inches wide.

Scale.



East.