

PLAT OF STERNBERG SECOND ADDITION AND REPLAT OF A PORTION OF STERNBERG FIRST ADDITION HAYS, KANSAS

LEGAL DESCRIPTION

A tract of land situated in the Southeast Quarter of Section 27, Township 13 South, Range 18 West of the Sixth Principal Meridian, Ellis County, Kansas, and more particularly described as follows:

Commencing at the Southeast Corner of Section 27, Township 13 South, Range 18 West; THENCE on an assumed bearing of South 89 degrees 28 minutes 28 seconds West along the South line of said Section 27 a distance of 590.00 feet to the Southwest Corner of Eastborough Second Addition to the City of Hays, Kansas; THENCE North 00 degrees 31 minutes 35 seconds West along the West line of said Eastborough Second Addition, a distance of 50.00 feet to the North right of way line of 27th Street, and the point of beginning; THENCE South 89 degrees 28 minutes 28 seconds West along the North right of way line of 27th Street, a distance of 715.63 feet to the East line of Sternberg First Addition to the City of Hays, Kansas; THENCE North 00 degrees 31 minutes 32 seconds West along the East line of said Sternberg First Addition, a distance of 270.00 feet; THENCE South 89 degrees 28 minutes 28 seconds West a distance of 350.00 feet to a point on the west line of said addition; THENCE South 00 degrees 31 minutes 32 seconds East along the West line of said Sternberg First Addition, a distance of 270.00 feet to a point on the North right of way line of 27th Street; THENCE South 89 degrees 28 minutes 28 seconds West along the North right of way line of 27th Street, a distance of 224.85 feet; THENCE North 00 degrees 42 minutes 17 seconds West a distance of 386.19 feet; THENCE North 89 degrees 28 minutes 28 seconds East a distance of 232.78 feet; THENCE North 22 degrees 01 minutes 23 seconds East a distance of 256.15 feet; THENCE North 83 degrees 01 minutes 01 seconds East a distance of 250.00 feet; THENCE North 60 degrees 28 minutes 42 seconds East a distance of 125.00 feet; THENCE North 02 degrees 38 minutes 17 seconds West a distance of 320.00 feet; THENCE North 33 degrees 18 minutes 13 seconds East a distance of 60.06 feet; THENCE North 61 degrees 40 minutes 20 seconds East a distance of 179.48 feet; THENCE North 51 degrees 56 minutes 38 seconds East a distance of 197.12 feet; THENCE North 07 degrees 07 minutes 46 seconds East a distance of 237.03 feet; THENCE North 28 degrees 00 minutes 15 seconds East a distance of 105.05 feet; THENCE South 70 degrees 11 minutes 18 seconds East a distance of 340.10 feet; THENCE South 01 degrees 33 minutes 25 seconds West a distance of 392.61 feet; THENCE North 90 degrees 00 minutes 00 seconds East a distance of 299.31 feet to the West line of Eastborough Second Addition to the City of Hays, Kansas; THENCE on a curve to the right having a radius of 390.00 feet, a chord bearing of South 21 degrees 34 minutes 27 seconds West, a chord distance of 107.54 feet, and an arc distance of 107.54 feet along the westerly line of said Eastborough Second Addition; THENCE South 29 degrees 28 minutes 25 seconds West along the westerly line of said addition, a distance of 356.48 feet; THENCE South 25 degrees 16 minutes 08 seconds West along the westerly line of said addition, a distance of 204.57 feet; THENCE South 29 degrees 28 minutes 25 seconds West along the westerly line of said addition, a distance of 223.80 feet; THENCE South 00 degrees 31 minutes 35 seconds East along the westerly line of said Eastborough Second Addition, a distance of 312.80 feet to the North right of way line of 27th Street and the point of beginning. This tract contains 30,056 acres, including the North 100.00 feet (0.804 Acres) of Sternberg First Addition.

STREETS & EASEMENTS:

Streets, drives, and circles as shown on this plat and not heretofore dedicated to and for public use are hereby dedicated. Easements are hereby dedicated for public use, as utility easement right-of-way, which are shown as lying between the dashed lines in widths indicated and as set forth on this plat, and said easements may be employed for the purpose of installing, repairing and maintaining gas lines, electric lines, telephone lines, and all other forms and types of public utilities, now or hereafter used, by the public over, under and along the strips marked "Utility Esm't."

APPROVALS:

This plat, Sternberg Second Addition and Replat Of A Portion Of Sternberg First Addition, has been submitted to and approved by the Hays - Ellis County Planning Commission this 20th day of July, 1998.

Sammy J. Hark
CHAIRMAN
Don Baldwin
SECRETARY

The dedications shown on this plat accepted by the City Commission of the City of Hays, Kansas, this 13th day of August, 1998.

Wayne Billinger
MAYOR
Carol Sue Grabbe, City Clerk
John T. Bird, Attorney for the City of Hays



OWNER'S CERTIFICATE:

Know all men by these presents, that we, the undersigned property owners of the land above described have caused the same to be surveyed and platted into Lots, Blocks, Streets, Drives, Circles and Easements, the same to be known as "Sternberg Second Addition and Replat Of A Portion Of Sternberg First Addition" in Hays, Kansas. The Streets, Drives and Circles are hereby dedicated to and for the use of the public, and the easements as indicated on the accompanying plat are hereby granted to the public for the purpose of constructing, operating, maintaining, and repairing all public utilities.

By *Darrell Seibel*
Darrell Seibel
Marilyn E. Seibel
Marilyn E. Seibel
Wayne Billinger
Wayne Billinger, Mayor, City of Hays

NOTARY CERTIFICATE:

State of Kansas, County of Ellis, ss:
Be it remembered that on this 17 day of August, 1998, before me, a Notary Public in and for said County and State, came Darrell Seibel, Marilyn Seibel, and Wayne Billinger to me personally known to be the same persons who executed the foregoing instrument of writing and duly acknowledged the execution of same. In testimony whereof, I have hereunto set my hand and affixed my notarial seal, the day and year above written.

Carol Sue Grabbe
Notary Public
CAROL SUE GRABBE
NOTARY PUBLIC
STATE OF KANSAS
My Exp. Oct. 1, 2001

My Commission Expires: _____

RECORDED:

State of Kansas, County of Ellis, ss:

This is to certify that this instrument was filed for record in the Register of Deeds Office on the 19 day of Aug, 1998 in Book Cal, Page 363.

Raymond Rapp
REGISTER OF DEEDS
DEPUTY

Plat No. - 454-469
Rect - 454-486

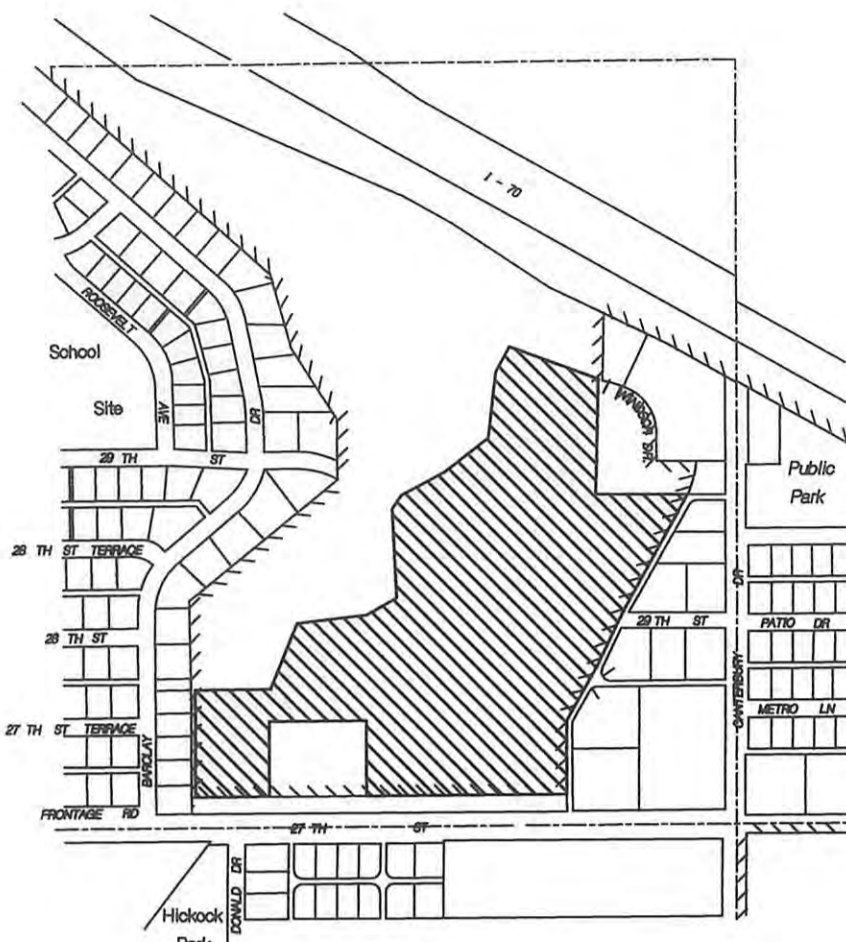
SURVEYOR'S CERTIFICATE:

I, Harvey Ruder, a Registered Land Surveyor in the State of Kansas, do hereby certify this plat to be true and correct to the best of my knowledge.

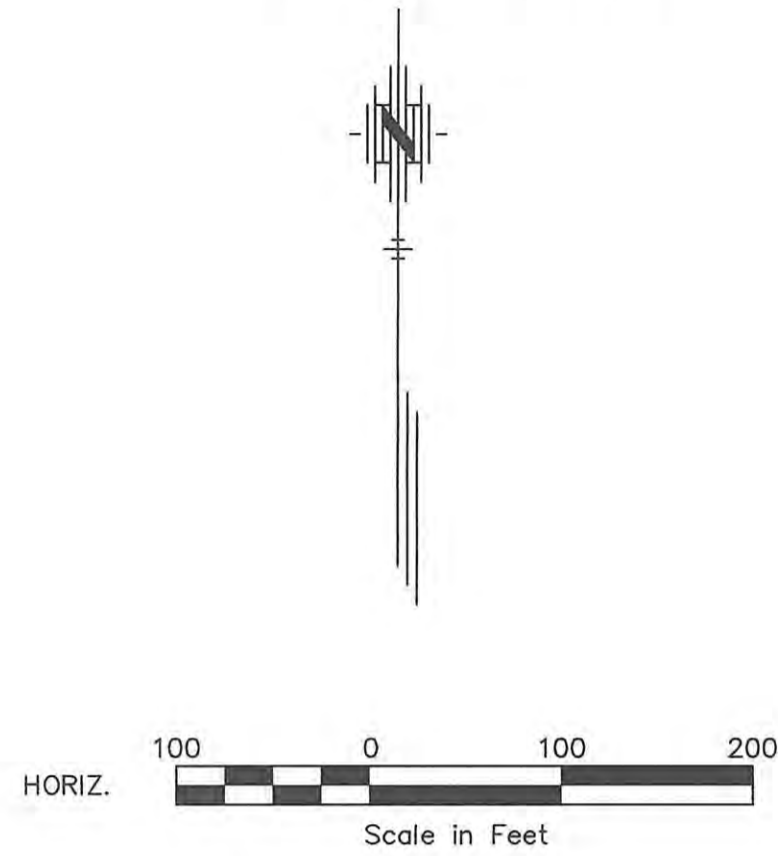
Harvey Ruder
Harvey Ruder
8-14-98
Date



BUK BUCHER, WILLIS & RATLIFF CORPORATION

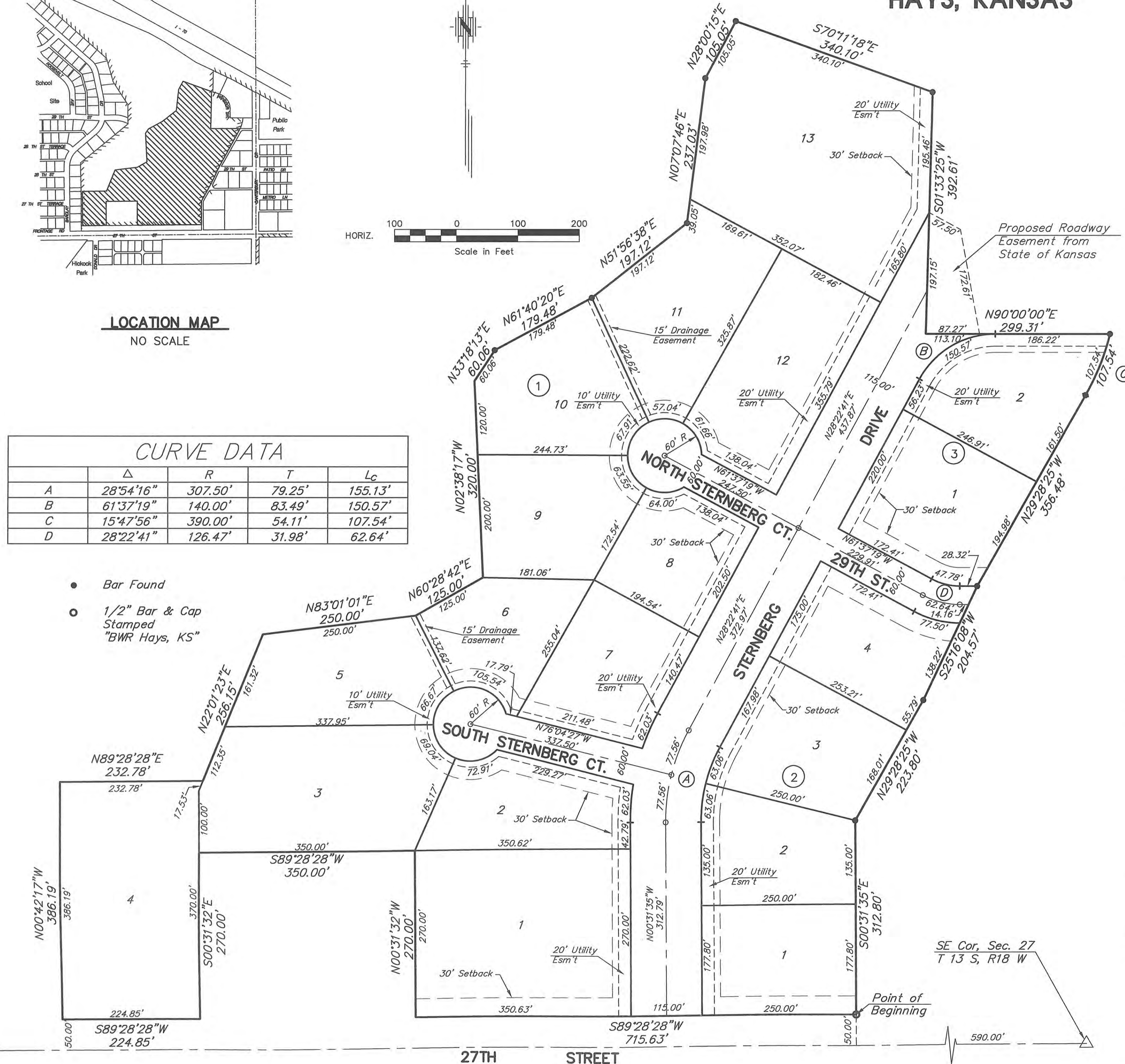


LOCATION MAP
NO SCALE



CURVE DATA				
	Δ	R	T	Lc
A	28°54'16"	307.50'	79.25'	155.13'
B	61°37'19"	140.00'	83.49'	150.57'
C	15°47'56"	390.00'	54.11'	107.54'
D	28°22'41"	126.47'	31.98'	62.64'

- Bar Found
- 1/2" Bar & Cap Stamped "BWR Hays, KS"



SE Cor., Sec. 27
T 13 S, R 18 W

Point of Beginning

590.00'

27TH STREET

DRAWN BY: J. L. RUDER, Surveyor
PROJECT NAME: Sternberg 2nd Addition
LAST EDIT DATE: 8-14-98 dwg