

STRUBBINS SUBDIVISION
 C 2
 SOUTHWEST QUARTER
 SECTION 26 TOWNSHIP 13 RANGE 18
 ELLIS COUNTY KANSAS

THIS IS A DIRECT PHOTOGRAPHIC
 REPRODUCTION OF THE OFFICIAL
 INSTRUMENT (RECORDED PLAT).

THIS REPRODUCTION WAS MADE BY
 BUCHER & WILLIS CONSULTING
 ENGINEERS, PLANNERS & ARCHITECTS
 IN NOVEMBER, 1979.

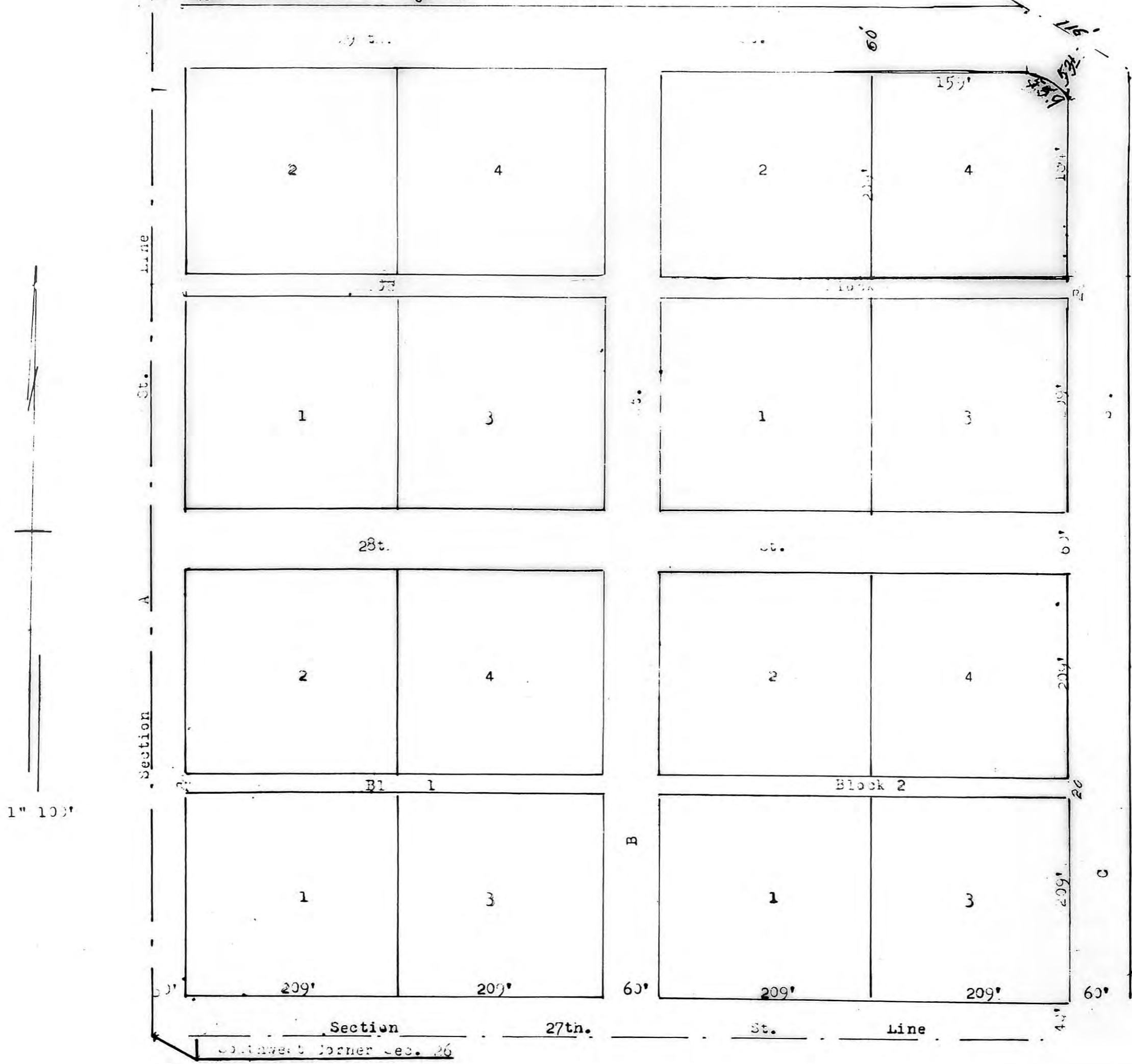
Plat and
 Declaration

STATE OF KANSAS
 ELLIS COUNTY
 This instrument was filed for record

OCT 31 1963

11:00 o'clock A.M. recorded in
 211 of 672 page 96
 Fees \$4.60 Registrar of Deeds
 Plat Book 2 Page 87

300
 140
 460



I hereby certify, that this is a true and correct Plat, of a certain tract, in the Southwest Quarter of Section Twenty Six (26), Township Thirteen (13) S. Range Eighteen (18) E. Ellis County, Kansas, ascribed as follows: Beginning at a point 40 feet North and 30 feet East of the Southwest Corner, of said section 26, thence North 99° Parallel with the West Line of said Section 26, thence East 856', parallel with the South Line of said section 26, to intersect the South Line of any line, of sec. 179, thence South 116' along said line, to a point, thence East 236' parallel with the West Line of said section 26, thence East 250' parallel with the West Line, of said section 26, to the line beginning

This Plat approved this _____ day of August 1963, by the Board of County Commissioners of Ellis County, Kansas.

Chairman.

This Plat approved this _____ day of August 1963, by the Ellis County Board of Health and City and County Planning Commission.

J. Smith

W2564
 26-13-18