

For Deeds See Book 22 of Misc Page 579



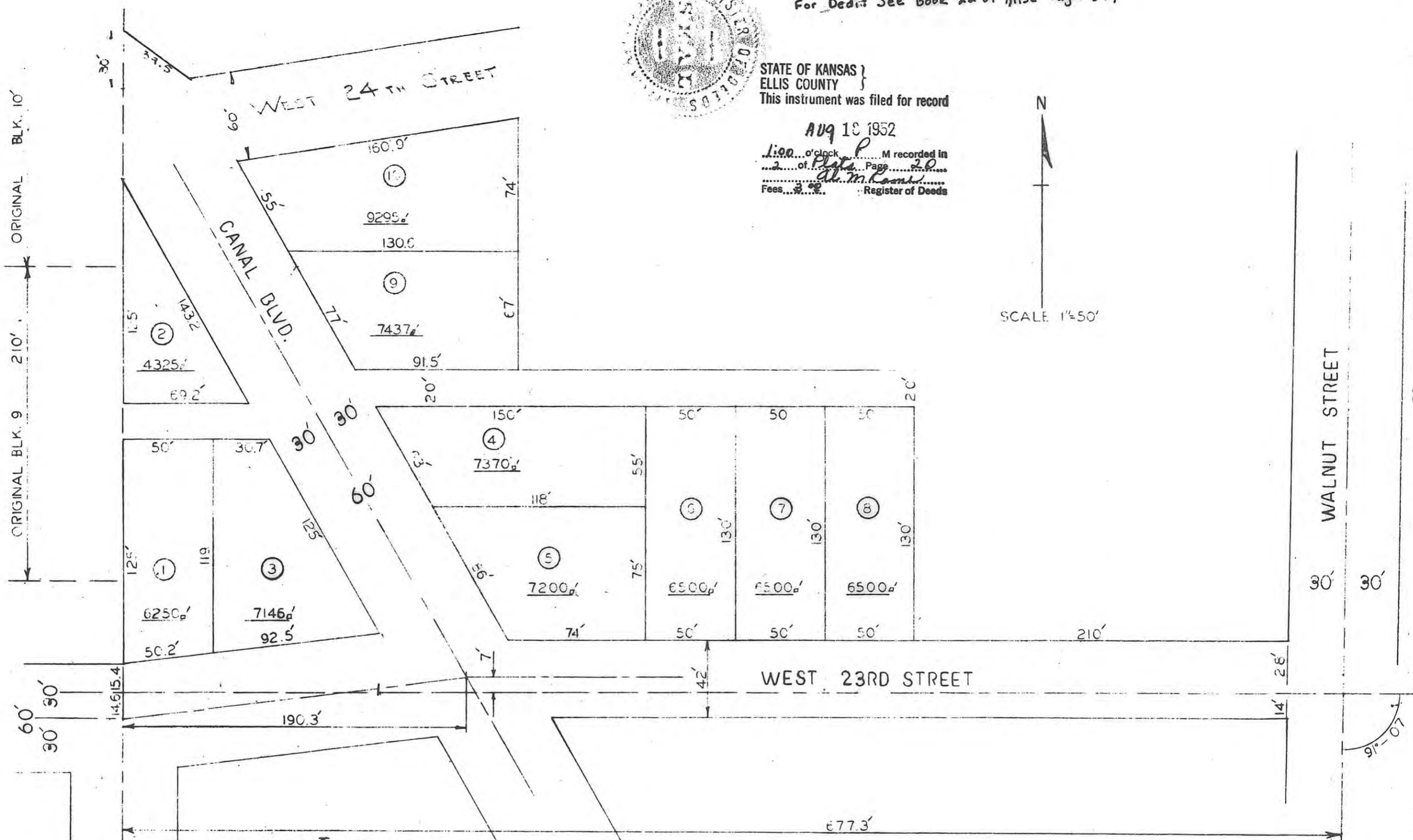
STATE OF KANSAS }
ELLIS COUNTY }
This instrument was filed for record

AUG 18 1952

1:00 o'clock P M recorded in
2 of Plate Page 20
at m. l. c. m. l. c.
Fees... Register of Deeds

N

SCALE 1"=50'



ARCHITECTURAL & ENGINEERING SERVICE
HAYS KANSAS

I certify this survey to be correct

Harold A. Rothgeb
HAROLD A. ROTHGEB



SWIM 1ST SUB-DIVISION
BEING A PORTION OF LOT (OR BLOCK) 11,
LEBOLD ALLEN & CO. ADDITION
CITY OF HAYS, KANSAS

THIS IS A DIRECT PHOTOGRAPHIC REPRODUCTION OF THE OFFICIAL INSTRUMENT (RECORDED PLAT).
THIS REPRODUCTION WAS MADE BY BUCHER & WILLIS, CONSULTING ENGINEERS, PLANNERS &
ARCHITECTS IN JUNE 1979