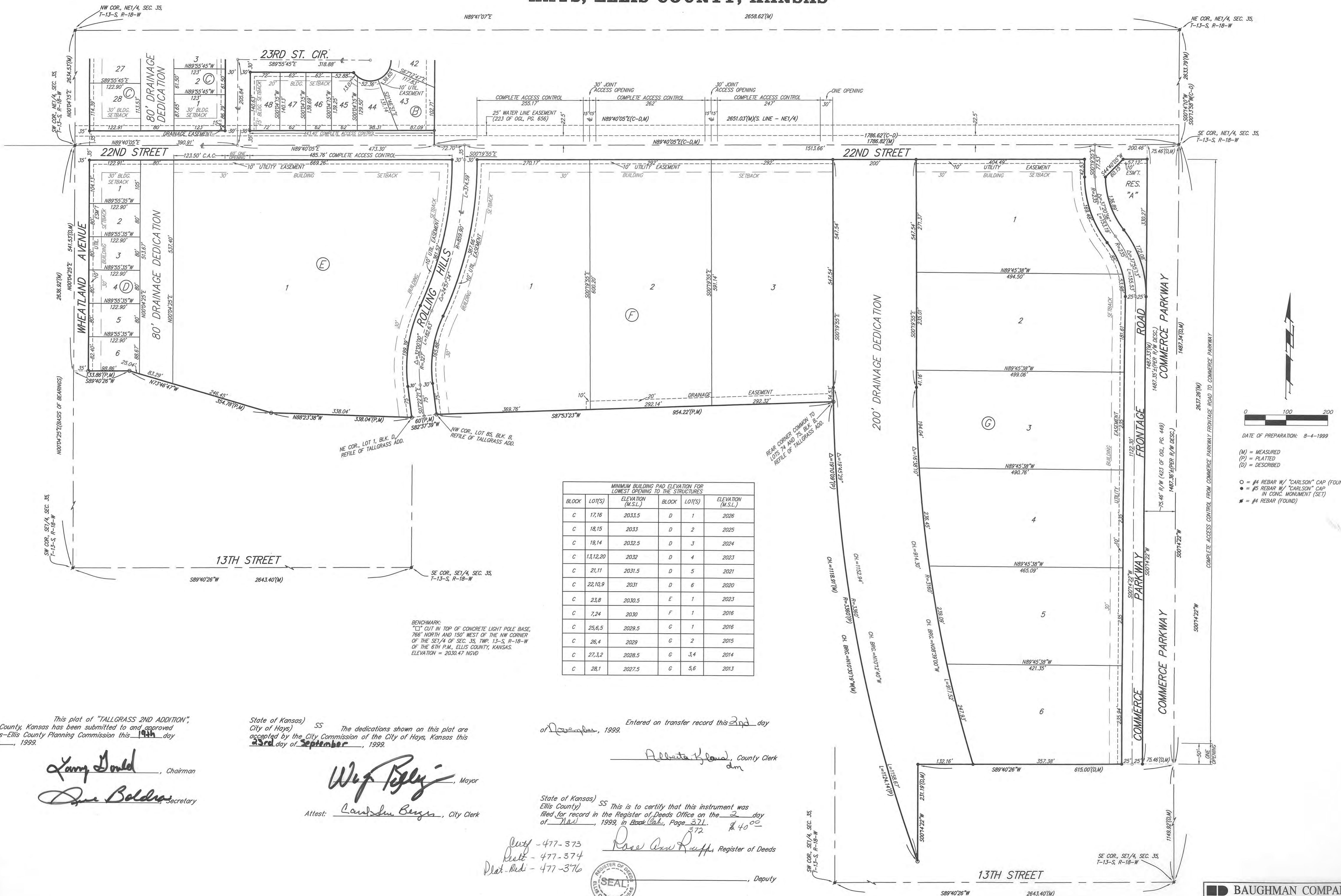


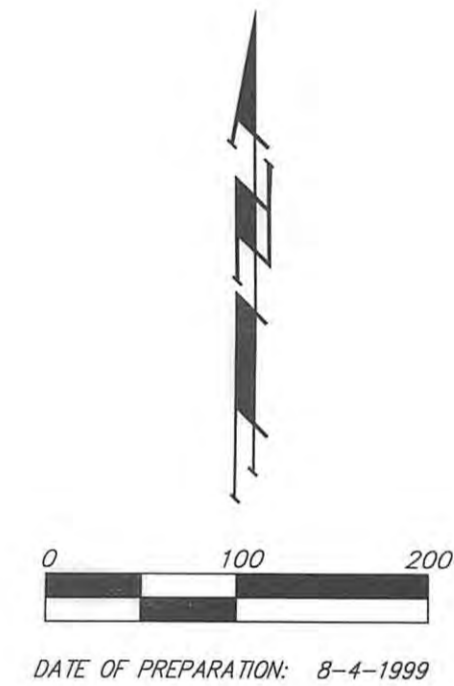
# TALLGRASS 2ND ADDITION

## HAYS, ELLIS COUNTY, KANSAS



MINIMUM BUILDING PAD ELEVATION FOR LOWEST OPENING TO THE STRUCTURES					
BLOCK	LOT(S)	ELEVATION (M.S.L.)	BLOCK	LOT(S)	ELEVATION (M.S.L.)
C	17,16	2033.5	D	1	2026
C	18,15	2033	D	2	2025
C	19,14	2032.5	D	3	2024
C	13,12,20	2032	D	4	2023
C	21,11	2031.5	D	5	2021
C	22,10,9	2031	D	6	2020
C	23,8	2030.5	E	1	2023
C	7,24	2030	F	1	2016
C	25,6,5	2029.5	G	1	2016
C	26,4	2029	G	2	2015
C	27,3,2	2028.5	G	3,4	2014
C	28,1	2027.5	G	5,6	2013

BENCHMARK:  
 "T" CUT IN TOP OF CONCRETE LIGHT POLE BASE,  
 766' NORTH AND 150' WEST OF THE NW CORNER  
 OF THE SE 1/4 OF SEC. 35, TWP. 13-S, R-18-W  
 OF THE 6TH P.M., ELLIS COUNTY, KANSAS.  
 ELEVATION = 2030.47 NGVD



DATE OF PREPARATION: 8-4-1999  
 (M) = MEASURED  
 (P) = PLATTED  
 (D) = DESCRIBED  
 ○ = #4 REBAR W/ "CARLSON" CAP (FOUND)  
 ● = #5 REBAR W/ "CARLSON" CAP IN CONC. MONUMENT (SET)  
 ■ = #4 REBAR (FOUND)

This plat of "TALLGRASS 2ND ADDITION", Hays, Ellis County, Kansas has been submitted to and approved by the Hays-Ellis County Planning Commission this 19th day of April, 1999.

*Larry Gould*, Chairman  
*Dave Boldras*, Secretary

State of Kansas) SS The dedications shown on this plat are accepted by the City Commission of the City of Hays, Kansas this 23rd day of September, 1999.

*Wesley P. Kelly*, Mayor  
 Attest: *Caroline Buzs*, City Clerk

Entered on transfer record this 2nd day of November, 1999.  
*Alberta Boyd*, County Clerk

State of Kansas) SS This is to certify that this instrument was filed for record in the Register of Deeds Office on the 2 day of Nov, 1999, in Book 321, Page 372.  
*Rose Ann Ruff*, Register of Deeds  
 Deputy

