

THIS IS A DIRECT PHOTOGRAPHIC REPRODUCTION OF THE OFFICIAL INSTRUMENT (RECORDED PLAT).

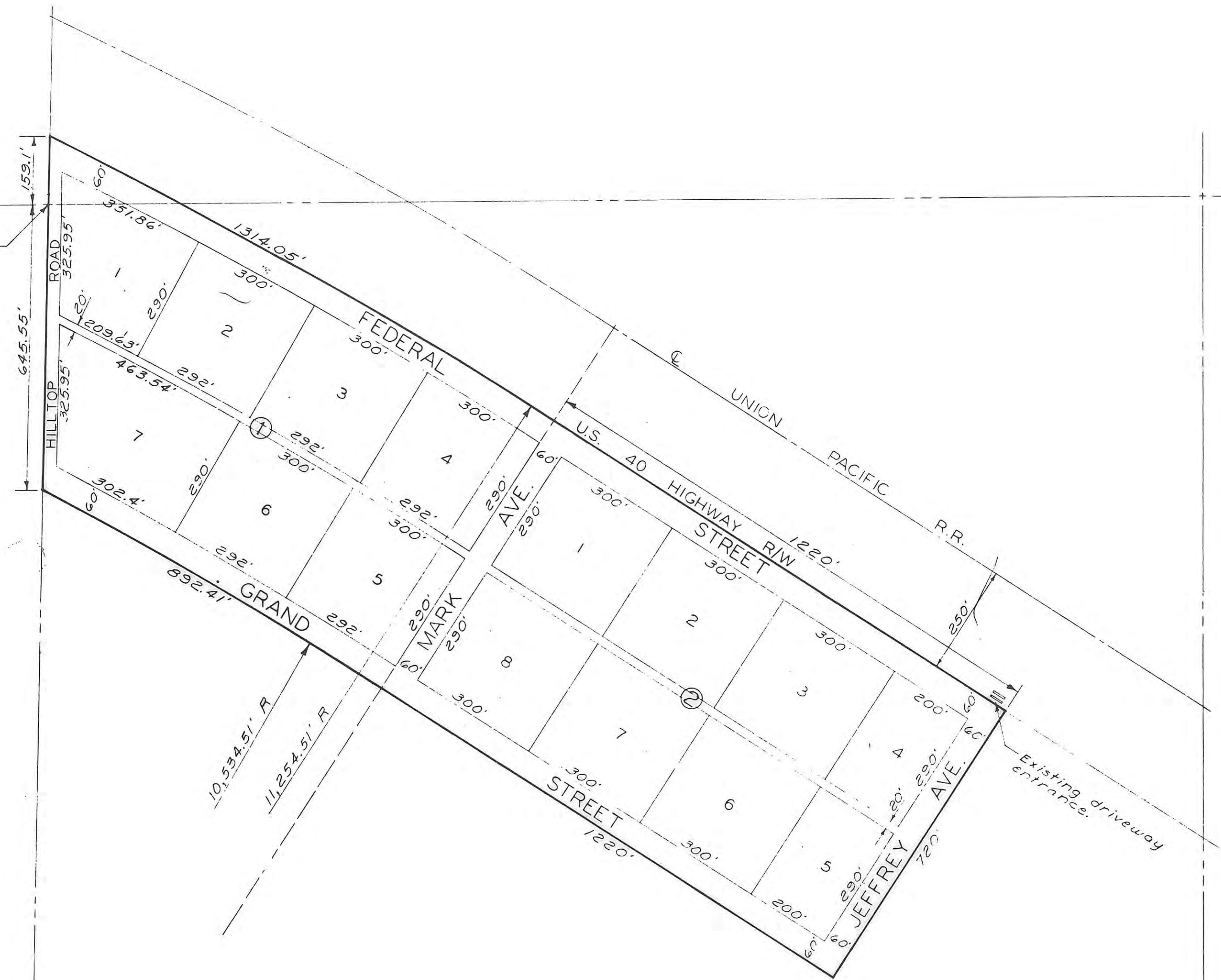
THIS REPRODUCTION WAS MADE BY BUCHER & WILLIS CONSULTING ENGINEERS, PLANNERS & ARCHITECTS IN NOVEMBER, 1979.

TERRACE VIEW

Point of beginning NW corner of Sec. 25, T13S, R19W of 6th P.M.



SCALE 1"=200'



LEGAL DESCRIPTION

A TRACT OF LAND IN THE SOUTHWEST ONE-QUARTER OF SECTION 24, AND THE NORTHWEST ONE-QUARTER OF SECTION 25, TOWNSHIP 13 SOUTH, RANGE 19 WEST, OF THE SIXTH PRINCIPAL MERIDIAN, ELLIS COUNTY, KANSAS, AND FURTHER DESCRIBED AS FOLLOWS:

BEGINNING AT THE SOUTHWEST CORNER OF SECTION 24; THENCE NORTH ALONG THE WEST LINE OF SECTION 24, 159.1 FEET TO A POINT ON THE SOUTH RIGHT-OF-WAY LINE OF U.S. HIGHWAY 40; THENCE RIGHT (SOUTHEASTERLY) ALONG THE SOUTH RIGHT-OF-WAY LINE OF U.S. HIGHWAY 40 ON A CURVE WHOSE RADIUS IS 11,254.51 FEET, A DISTANCE OF 1,314.05 FEET, MEASURED IN 100 FOOT CHORDS, EXCEPT THE LAST CHORD; THENCE CONTINUE ALONG THE SOUTH RIGHT-OF-WAY LINE OF U.S. HIGHWAY 40, 1,220 FEET; THENCE SOUTHWESTERLY AT 90 DEGREES 0 MINUTES, 720 FEET; THENCE NORTHWESTERLY PARALLEL TO THE SOUTH RIGHT-OF-WAY LINE OF U.S. HIGHWAY 40, 1,220 FEET; THENCE LEFT (NORTHWESTERLY) PARALLEL TO AND 720 FEET SOUTH OF THE SOUTH RIGHT-OF-WAY LINE OF U.S. HIGHWAY 40 ON A CURVE WHOSE RADIUS IS 10,534.51 FEET, A DISTANCE OF 892.41 FEET, MEASURED IN 100 FOOT CHORDS, EXCEPT THE LAST CHORD, TO A POINT ON THE WEST LINE OF SECTION 25; THENCE NORTH ALONG THE WEST LINE OF SECTION 25, 645.55 FEET TO THE POINT OF BEGINNING.

ENGINEER'S CERTIFICATE

I, JOHN W. SMITH, A LICENSED PROFESSIONAL ENGINEER, DO HEREBY CERTIFY THIS PLAT TO BE TRUE AND CORRECT TO THE BEST OF MY KNOWLEDGE.

SIGNED THIS 7 DAY OF December, 1966.

John W. Smith
JOHN W. SMITH, P.E.

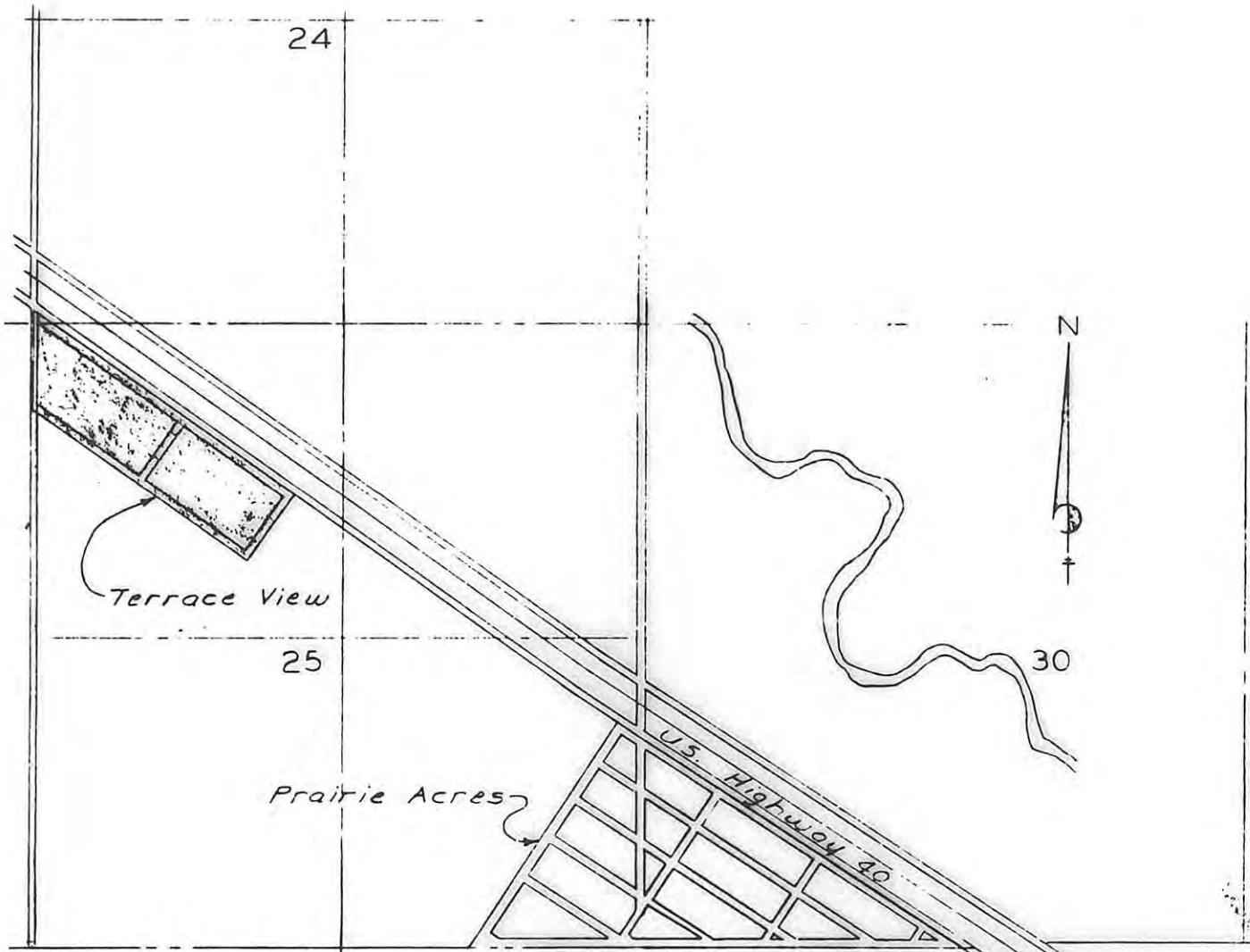
STATE OF KANSAS }
ELLIS COUNTY }
This instrument was filed for record

NOV 14 1968

3:15 o'clock P.M. recorded in
258 of S.R. page 113
Fees: \$2.00 Registrar of Deeds

Dedication
Plat
Transfer
Resolution
Protective
Covenants

\$5.00 Book 2 Page 113
\$1.50
\$4.00 Book 243 Page 438
\$6.00 Book 243 Page 440



LOCATION MAP

DESIGNED BY	DJB	JOHN W. SMITH CONSULTING ENGINEER AND ASSOCIATES HAYS KANSAS
DRAWN BY	LAD	
CHECKED BY	J.W.S.	
DATE	Dec 66	
JOB NO.	66-245	

TERRACE VIEW

SHEET 1 OF 1

HAYS KANSAS