

THIS IS A DIRECT PHOTOGRAPHIC REPRODUCTION OF THE OFFICIAL INSTRUMENT (RECORDED PLAT).

THIS REPRODUCTION WAS MADE BY BUCHER & WILLIS CONSULTING ENGINEERS, PLANNERS & ARCHITECTS IN NOVEMBER, 1979.

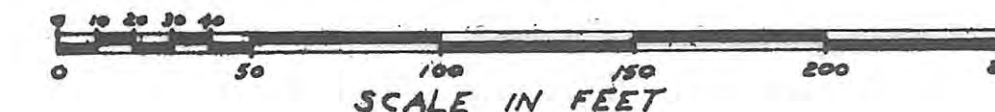
TIMBER CLAIM ADDITION

TO THE CITY OF HAYS, KANSAS

LEGAL DESCRIPTION

A TRACT OF LAND IN THE NORTHEAST ONE-QUARTER OF SECTION 34, TOWNSHIP 13 SOUTH, RANGE 18 WEST OF THE SIXTH PRINCIPAL MERIDIAN, ELLIS COUNTY, KANSAS, AND MORE FULLY DESCRIBED AS FOLLOWS:

BEGINNING AT THE SOUTHWEST CORNER OF SAID NORTHEAST ONE-QUARTER OF SECTION 34; THENCE NORTH ALONG THE WEST LINE OF SAID NORTHEAST ONE-QUARTER, 737.52 FEET; THENCE EAST WITH AN INTERNAL ANGLE OF 89 DEGREES 36 MINUTES 33 SECONDS, 179.55 FEET; THENCE SOUTHERLY, PARALLEL TO THE EAST LINE OF SAID NORTHEAST ONE-QUARTER, 337.70 FEET; THENCE LEFT ON A CURVE OF 70 FOOT RADIUS WITH AN INTERNAL ANGLE OF 89 DEGREES 40 MINUTES 30 SECONDS; AN ARC DISTANCE OF 109.50 FEET; THENCE EASTERLY PARALLEL TO THE NORTH LINE OF TWENTY-SECOND STREET, 330 FEET; THENCE RIGHT ON A CURVE OF 300 FOOT RADIUS WITH AN INTERNAL ANGLE OF 37 DEGREES 35 MINUTES, AN ARC DISTANCE OF 196.68 FEET; THENCE RIGHT ON A CURVE OF 373.50 FOOT RADIUS WITH AN INTERNAL ANGLE OF 9 DEGREES 57 MINUTES, AN ARC DISTANCE OF 64.74 FEET; THENCE LEFT ON A CURVE OF 313.50 FOOT RADIUS WITH AN INTERNAL ANGLE OF 35 DEGREES 43 MINUTES, AN ARC DISTANCE OF 195.30 FEET TO THE NORTHERLY LINE OF TWENTY-SECOND STREET; THENCE SOUTH 29.31 FEET TO THE SOUTH LINE OF SAID NORTHEAST ONE-QUARTER; THENCE WEST ALONG THE SOUTH LINE OF SAID NORTHEAST ONE-QUARTER, 673.20 FEET TO THE POINT OF BEGINNING.

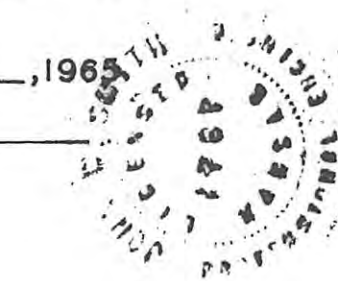


ENGINEER'S CERTIFICATE

I, THE UNDERSIGNED, JOHN W. SMITH A LICENSED PROFESSIONAL ENGINEER, DO HEREBY CERTIFY THIS PLAT TO BE TRUE AND CORRECT TO THE BEST OF MY KNOWLEDGE.

SIGNED THIS 27 DAY OF May, 1965

John W. Smith
JOHN W. SMITH, P.E.



I HEREBY CERTIFY THAT THIS PLAT WAS FIRST SUBMITTED TO THE CITY PLANNING COMMISSION AND BY THE CITY PLANNING COMMISSION TO THE GOVERNING BODY OF THE CITY OF HAYS, KANSAS AND BY SUCH GOVERNING BODY APPROVED ON May 27, 1965.

Dorothy Soderblom
DOROTHY SODERBLOM
CITY CLERK



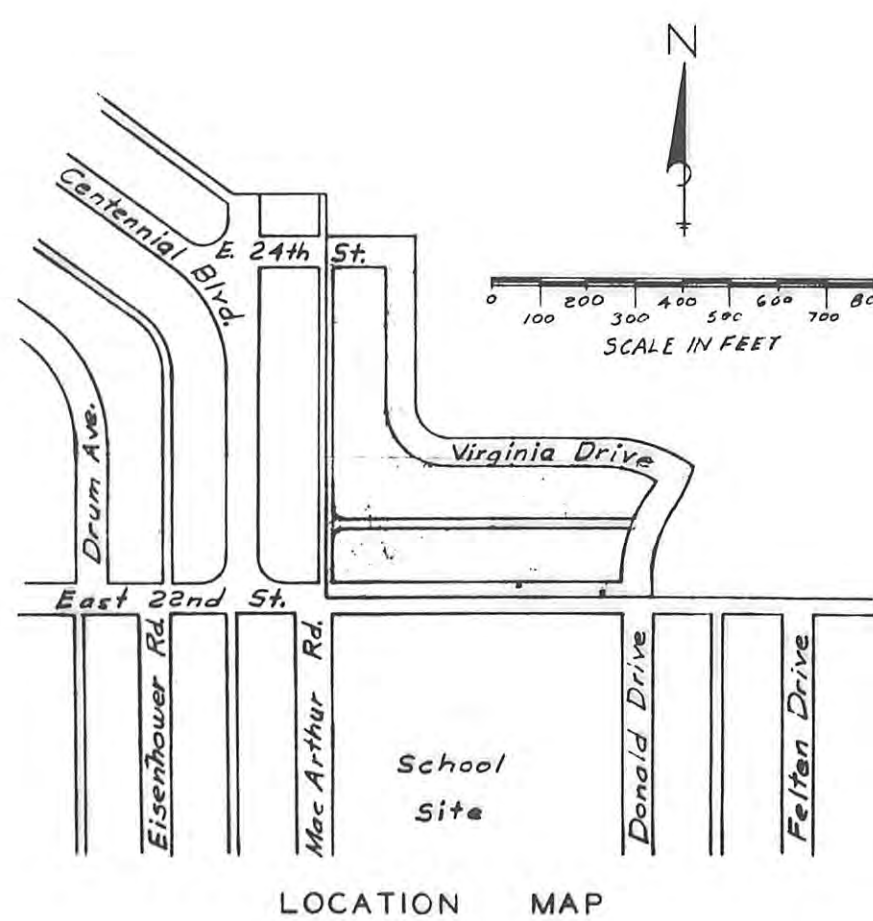
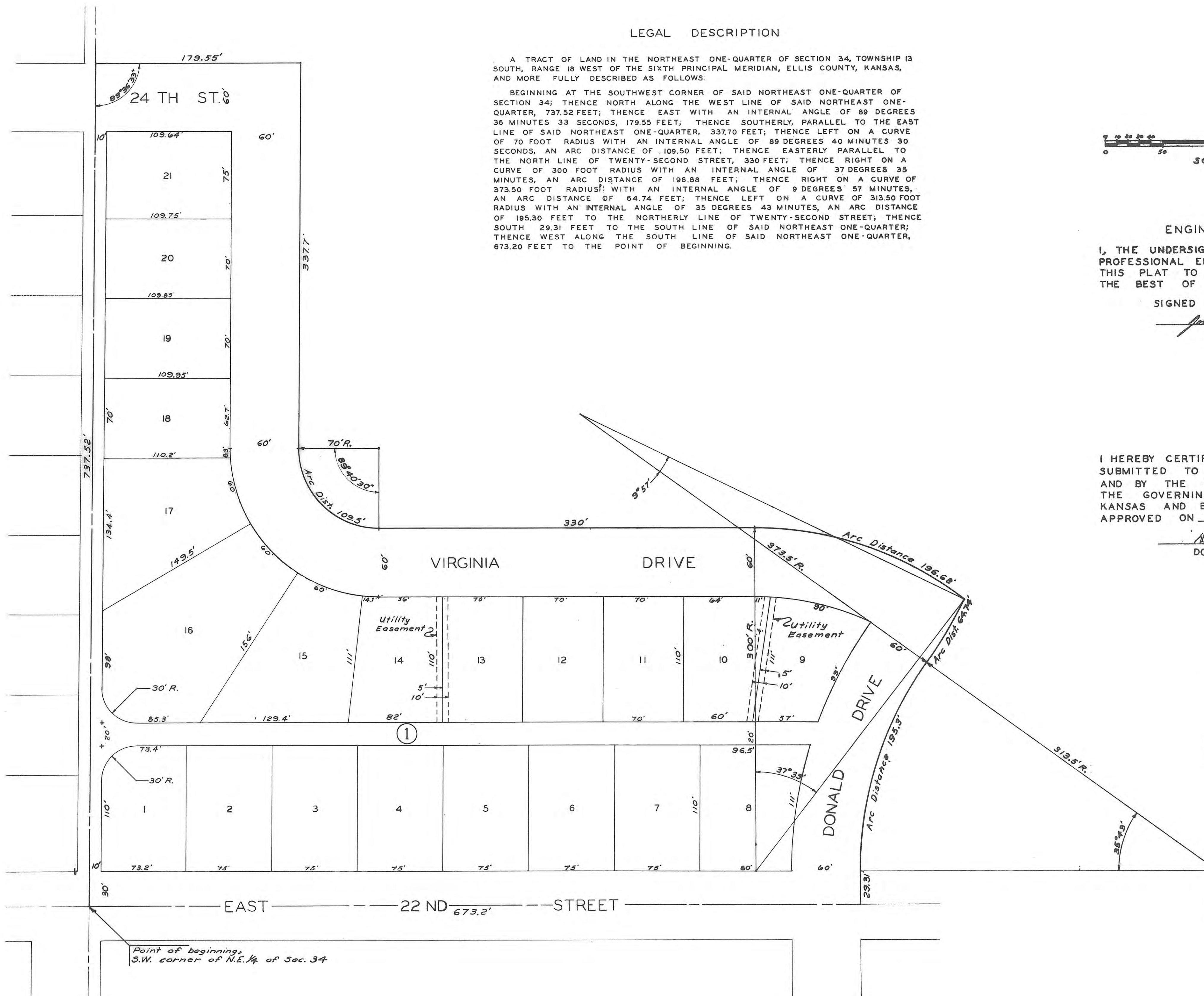
STATE OF KANSAS
ELLIS COUNTY
This instrument was filed for record

JUN 2 1965

1:00 o'clock in recorded in
2:00 o'clock in recorded in
Feb. 3, 65 Register of Deeds
5:10 Temp

Ordinance 220-702
Resolution 220-703
Resolution 220-706

NOTE
ALL ARC MEASUREMENTS ARE RECORDED AS CHORD DISTANCES UNLESS OTHER WISE NOTED.



DESIGNED BY		JOHN W. SMITH	
DRAWN BY		CONSULTING ENGINEER	
CHECKED BY		AND ASSOCIATES	
DATE	JOB NO.	HAYS	KANSAS
May 65	65-217		
TIMBER CLAIM ADDITION			
HAYS - KANSAS			SHEET 1 OF 1