

A Re Subdivision into Lots of Lots

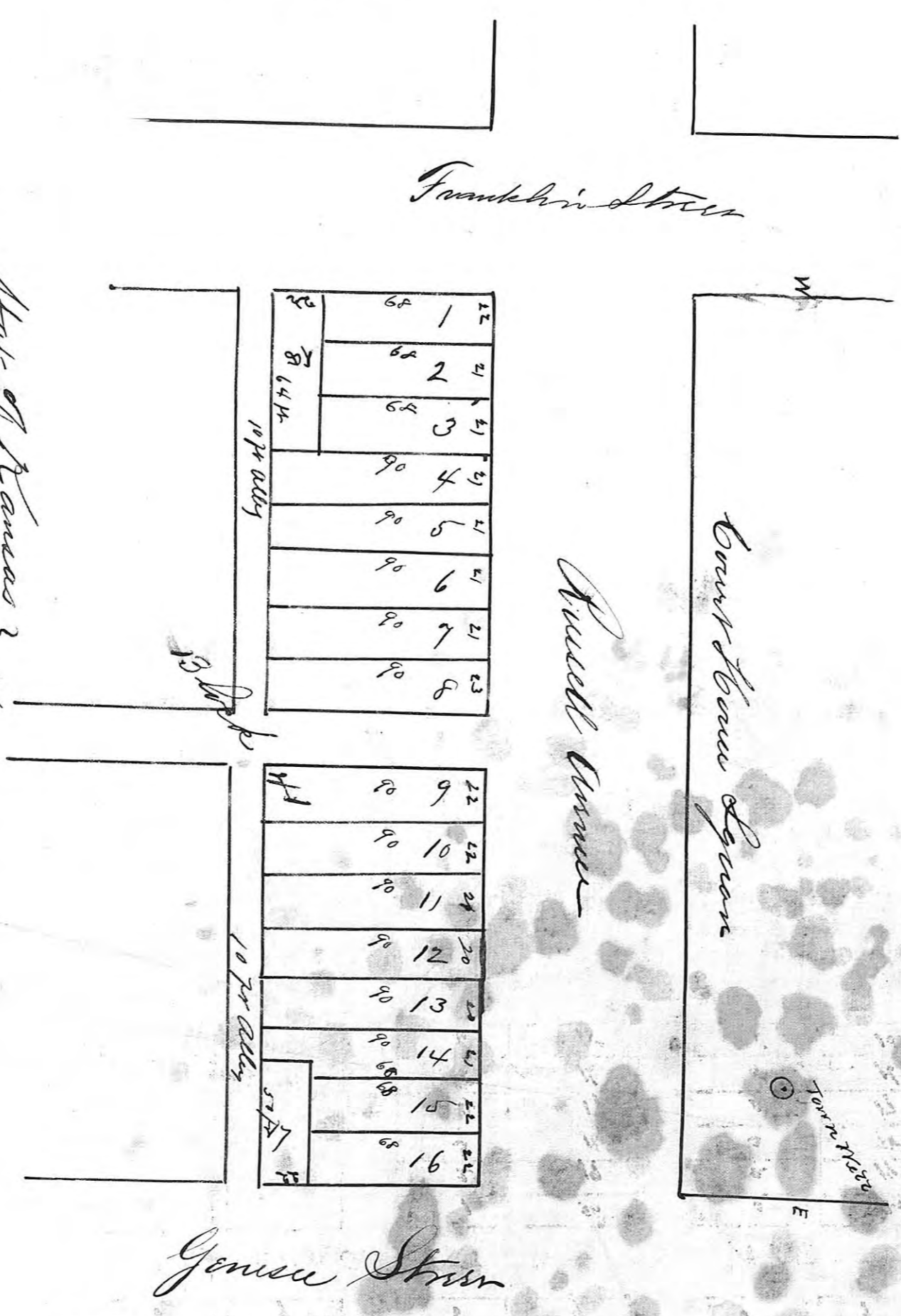
1, 2, 3, 4, 35, 36, 37, 38, in Block 41

Wm. Klemm
Trego County Kansas

Shirley City, this instrument to be a part and
corner of the City of Trego, Kansas in and
in the City of Trego

Witness my hand and seal
this 24th day of April A.D. 1879

Wm. Klemm
City Clerk Trego



State of Kansas }
County of Ellis } ss.

On the 24th day April
A. D. 1879 before me the undersigned a clerk
of the District personally came John & Carl
to me well known to be the proprietor of the
lots of the above plat was made and
plotted and acknowledged the same to be
a true and correct plan of a subdivi-
sion into lots of lots as above specified
of the town of Warraney of the County
of Trego laid out and located upon
Sec (9) Township (12) Range (23)

Wear



John & Carl
In Testimony whereof their
hands and feet my hand and official
the official this 24th day of April
A.D. 1879 Wm. Klemm
Clerk