

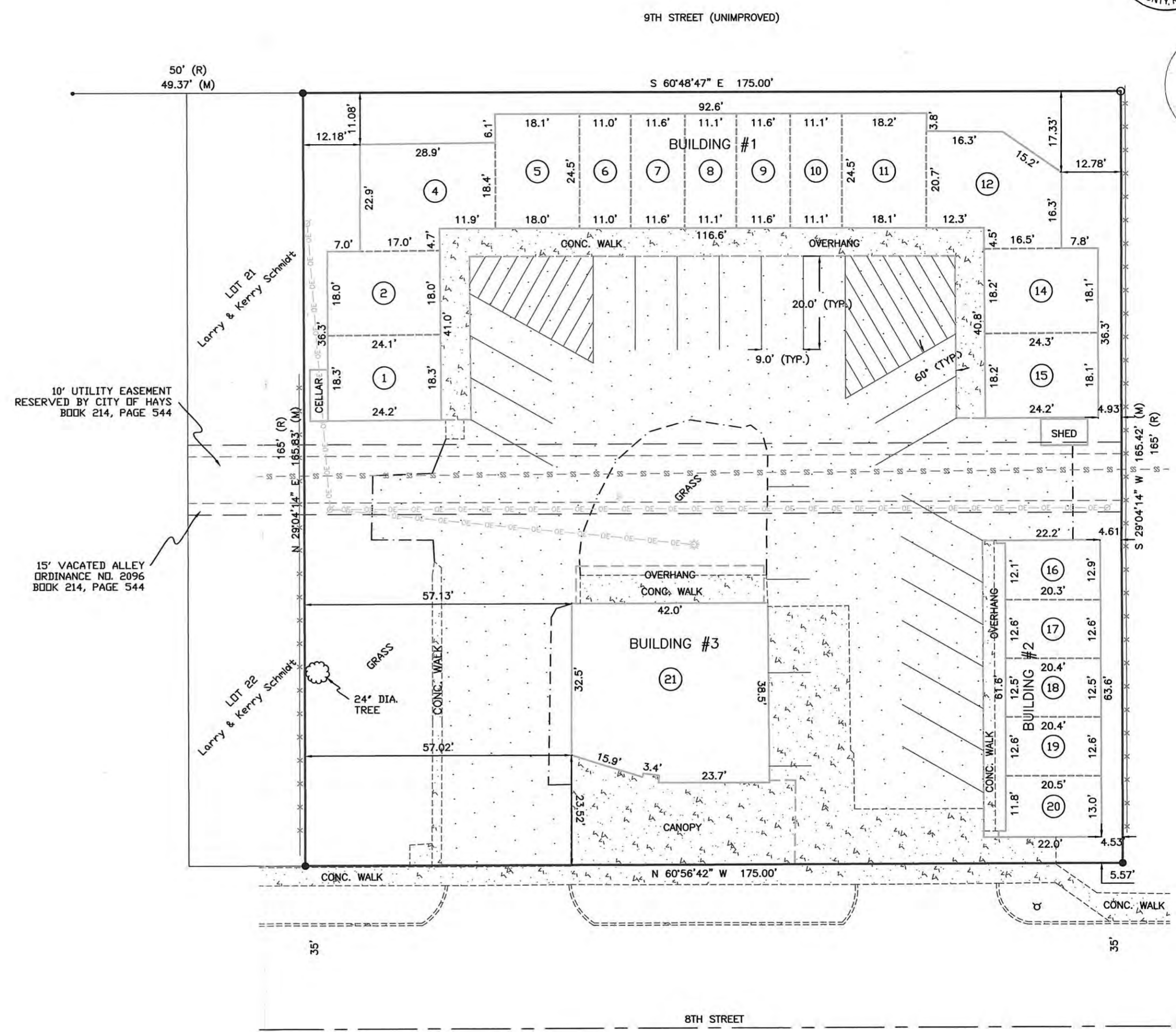
# BOUNDARY SURVEY

for  
**WEBER CONDOS, LLC**

STATE OF KANSAS } **MAY 16 2005**  
 ELLIS COUNTY }  
 This instrument was filed for record  
 at 3:30 o'clock P M recorded in  
Cap of Plats page 421  
Webber Christen  
 Fees 20.00 Registered of Deeds



Square Footage	
Description	Sq. Ft.
Property	28987.2
Common Area	20883.2
Building #1	5242.0
Unit 1	441.7
Unit 2	433.8
Unit 4	607.8
Unit 5	440.8
Unit 6	269.3
Unit 7	283.5
Unit 8	271.4
Unit 9	283.1
Unit 10	271.5
Unit 11	444.0
Unit 12	613.5
Unit 14	441.6
Unit 15	440.0
Building #2	1301.3
Unit 16	260.9
Unit 17	256.1
Unit 18	255.7
Unit 19	258.5
Unit 20	270.1
Building #3	1560.7



**LEGAL DESCRIPTION:**  
 Lots Twenty-three (23) through Thirty-six (36), inclusive, in Block Fifteen (15), J.E. WILSON'S ADDITION to the City of Hays, Ellis County, Kansas

Including that portion of a vacated alley as described in City of Hays Ordinance No. 2096, recorded in Book 214, Page 544.

**SURVEYOR'S CERTIFICATE:**  
 I, Darrell E. Christen, Registered Land Surveyor #1367 in the State of Kansas, certify that the survey shown on this plat was made by me or under my direct supervision on September 2nd, 2004. This plat is true and correct to the best of my knowledge and belief.



Darrell E. Christen  
 Kansas Reg. No. 1367

- LEGEND:**
- Found 1/2" rebar w/cap \*LS 715\*
  - Found 3/4" iron bar w/ribbon
  - Set 1/2" rebar w/cap \*CHRISTEN LS 1367\*
  - ⊗ Power Pole
  - ⊙ Light Pole
  - ⊕ Fire Hydrant
  - R Recorded Distance
  - M Measured Distance
  - - - - Sanitary Sewer
  - - - - Overhead Electric
  - - - - Fence
  - [Hatched Box] Asphalt
  - [Dotted Box] Concrete

Jim Weber  
 527 E. 8th Street  
 Hays, KS 67601

**ADVANCED LAND SURVEYING & DRAFTING**  
 PO Box 27 Hays, KS 67601 Office: (785) 650-0139 Fax: (785) 650-0189

SHEET: 1 of 1 PROJECT #: 04-407  
 DRAWN BY: KMT SCALE: 1" = 20'  
 APPROVED BY: DEC DATE: 09/02/04