

ORDER VACATING PLAT

NOW, on this 28th day of September, 1981, the petition of Lawrence J. Weilert and Helen Weilert, his wife, come on for hearing before the Board of Ellis County Commissioners.

The Board finds that notice by publication in the Ellis County Star has been properly given and notice to the Hays City Council and Hays Planning Commission has been given as provided in 58-2613 of the 1981 Session Laws.

THEREAFTER, the Board finds that no private rights are injured or endangered and that the public will not suffer loss and inconvenience by vacating said plat.

IT IS THEREFORE ORDERED AND RESOLVED by the Board of the Ellis County Commissioners that the following described plat is hereby ordered vacated to-wit:

Blocks One (1) and Two (2) of Weilert Addition to the City of Hays, Kansas, located on a tract of land in the West Half of the Southeast Quarter (W/2 SE/4) of Section Three (3), Township Fourteen (14) South, Range Eighteen (18), West of the Sixth Principal Meridian, Ellis County, Kansas.

*Harold G. Kraus*  
HAROLD G. KRAUS, Chairman  
Ellis County Commissioner

*Orlando Wasinger*  
ORLANDO WASINGER  
Ellis County Commissioner

*Bliss C. Dubach*  
BLISS C. DUBACH  
Ellis County Commissioner

ATTEST: *Emery J. Rome*  
EMERY J. ROME  
Ellis County Clerk

STATE OF KANSAS }  
ELLIS COUNTY }  
This instrument was filed for record  
SEP 28 1981

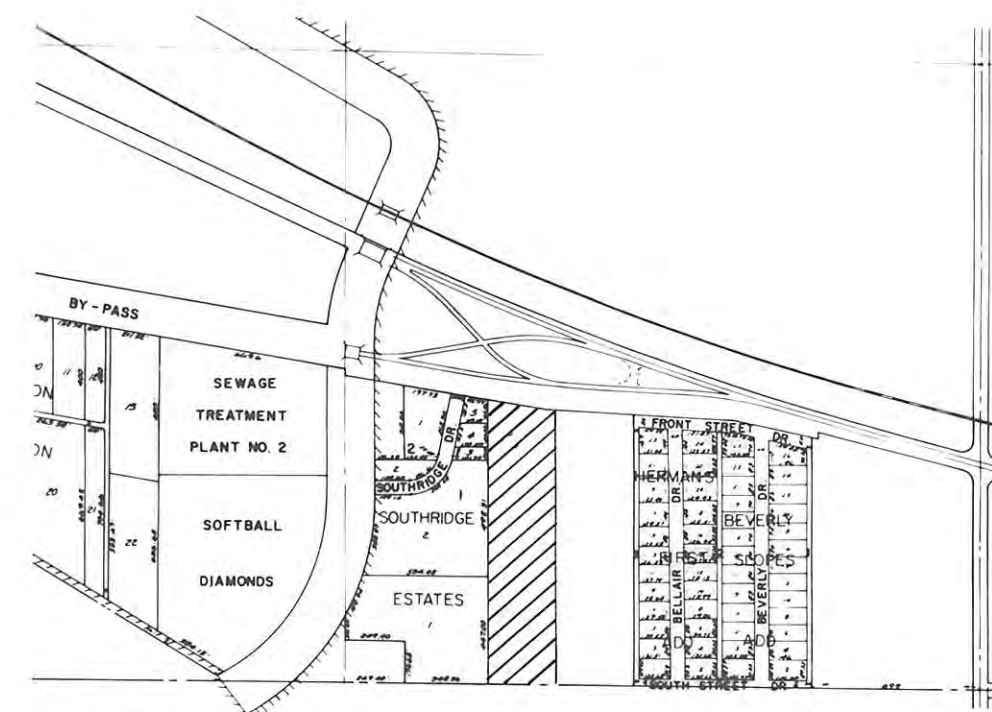
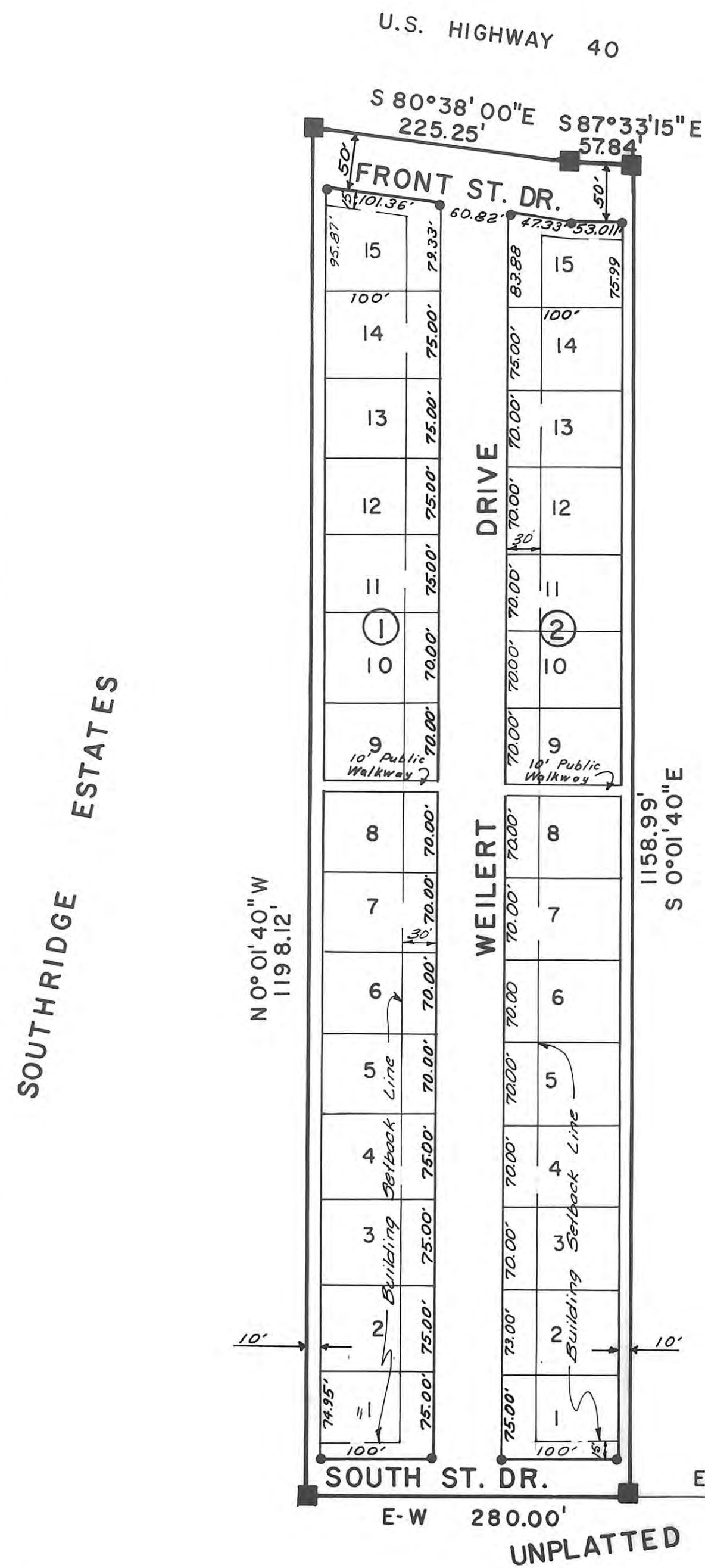
10:35 clock M recorded in  
314 of bk 2 page 349  
*Virginia Herzog*  
Register of Deeds

DON C. STAAB  
ATTORNEY AT LAW  
106 W. 12TH STREET  
HAYS, KANSAS 67601

349

*Co. Clerk.*

PLAT OF  
WEILERT ADDITION  
HAYS, KANSAS



LEGAL DESCRIPTION:  
A tract of land in the West Half (W 1/2) of the Southeast Quarter (S.E. 1/4) of Section 3, Township 14 South, Range 18 West, of the 6th Principle Meridian, Ellis County, Kansas, and more particularly described as follows:

Commencing at the Southeast Corner of the Southeast Quarter (S.E. 1/4) of Section 3, Township 14 South, Range 18 West; THENCE on an assumed bearing of N 90° 00' 00" W along the South line of said Southeast Quarter a distance of 1755.50 feet to the point of beginning; THENCE continuing along the last described course, a distance of 280.00 feet; THENCE on a bearing of N 0° 01' 40" W, a distance of 1158.12 feet to a point on the South Right-of-way line of U.S. Highway 40; THENCE along the South Right-of-way line of U.S. Highway 40 on a bearing of S 80° 38' 00" E a distance of 225.24 feet; THENCE continuing along the South Right-of-way line of U.S. Highway 40 on a bearing of S 87° 33' 15" E a distance of 57.84 feet; THENCE on a bearing of S 0° 01' 40" E a distance of 1158.99 feet to the point of beginning. Said tract contains 7.558 acres, more or less.

STREETS, ALLEYS AND EASEMENTS:

Streets, Alleys and Avenues as shown on this plat and not heretofore dedicated to and for public use are hereby so dedicated.

Easements are hereby dedicated for public use, as utility easement right-of-way which are shown as lying between the dashed lines in widths indicated and as set forth on this plat. Said easements may be employed for the purpose of installing, repairing and maintaining gas lines, electric lines, telephone lines, sewer lines, water lines and all other forms and types of public utilities, new or hereafter used, by the public, over, under and along the strips marked "Utility Esm'ts".

OWNERS CERTIFICATE:

Know all men by these presents, that we, the undersigned property owners of the land above described, have caused the same to be surveyed and platted into lots, blocks, streets, alleys and easements, the same to be known as the Weilert Addition in Ellis County, Kansas. The Streets, Avenues and Alleys are hereby dedicated to and for the use of the public, and easements as indicated on the accompanying plat are hereby granted to the public for the purpose of constructing, operating, maintaining and repairing all public utilities.

Lawrence J. Weilert  
509 East 16th Street  
Hays, Kansas

*Lawrence J. Weilert*  
Lawrence J. Weilert

NOTARY CERTIFICATE:

State of Kansas, County of Ellis, ss

Be it remembered that on this 28th day of November, 1977, before me, a notary public in and for said County and State, came Lawrence J. Weilert, to me personally known to be the same person who executed the foregoing instrument of writing and duly acknowledged the execution of same. In testimony whereof, I have hereunto set my hand and affixed my notarial seal the day and year above written.

My Commission Expires:  
March 25, 1979

*Joseph C. Karlin*  
Joseph C. Karlin  
Notary Public

SURVEYOR'S CERTIFICATE:

I, James Ray Flemons, a licensed professional engineer in the State of Kansas, do hereby certify this plat to be true and correct to the best of my knowledge; and that all iron bars as shown have been accurately set. Said survey was completed in November, 1977.

*James R. Flemons*  
James Ray Flemons, P. E.  
Hays, Kansas

APPROVALS:

This plat has been submitted to and approved by the Hays-Ellis County Planning Commission this 21 day of November, 1977.

*John J. ...*  
Chairman

*Margaret C. Smith*  
Secretary

The dedication shown on this plat is accepted by the County Commission of Ellis County, Kansas, this 28 day of Nov. 1977.

Attest:  
*Emery J. Rome*  
Emery J. Rome  
County Clerk

*Eugene ...*  
Chairman

RECORDED:

State of Kansas, County of Ellis, ss

This is to certify that this instrument was filed for record in the Register of Deeds Office on the 6 day of Dec., 1977, in Book (Plat) 287 Page 27.

*Virginia Herzog*  
Virginia Herzog  
Register of Deeds  
*Rose Ann Rupp*  
Rose Ann Rupp  
Deputy

PREPARED BY  
BUCHER & WILLIS  
CONSULTING ENGINEERS, PLANNERS & ARCHITECTS