



SURVEYOR'S CERTIFICATE

STATE OF KANSAS }
COUNTY OF ELLIS } SS

I, the undersigned do hereby certify that I am a Licensed Professional Engineer in the State of Kansas with experience and proficiency in land surveying; that the heretofore described property was surveyed and subdivided by me, or under my supervision, that all Subdivision Regulations of Ellis County, Kansas, have been complied with in the preparation of this plat, and that all of the monuments shown herein actually exist and their positions are correctly shown to the best of my knowledge and belief.
Given under my hand and seal at Hays City, Kansas this 8th day of October A.D. 1976

Thomas W. McCormick
Thomas W. McCormick
Professional Engineer

OWNER'S CERTIFICATE

STATE OF KANSAS }
COUNTY OF ELLIS } SS

Know all men by these presents, that we, the undersigned property owners of the land as above set forth in the Surveyor's Certificate, have caused the same to be surveyed and platted into Lots, Blocks, Easements, Alleys, Lanes, Drives, Courts, a Street and an Avenue, the same to be known as Lots 1, 2, 3 & 4 of the Replat of Lots 1, 2 & 3 of Block 1, Weiler's Knob Hill, an addition to the City of Hays, Ellis County, Kansas, the Lanes, Drives, Courts, Street and Avenue are hereby dedicated to and for the use of public, and easements as indicated on the accompanying plat are hereby granted to the public for the purpose of constructing, operating, maintaining, and repairing all public utilities.

Emery L. Fulkner Dean E. Biggs

NOTARY CERTIFICATE

STATE OF KANSAS }
COUNTY OF ELLIS } SS

Be it remembered that on this 11 day of _____ A.D. 1976 before me a notary public in and for said County and State, came Emery Fulkner and Dean E. Biggs to be personally known to be the same persons who executed the foregoing instrument of writing and duly acknowledged the execution of same in testimony whereof I have herunto set my hand and affixed my notarial seal the day and year above written.

[Signature]
Notary Public
My Commission Expires 4/21/78

CERTIFICATE OF THE PLANNING COMMISSION

STATE OF KANSAS }
CITY OF HAYS } SS

This plat of Lots 1, 2, 3 & 4 of the Replat of Lots 1, 2 & 3 of Block 1, Weiler's Knob Hill has been submitted to and approved by the Hays Planning Commission this _____ day of _____ A.D. 1976.

[Signature] [Signature]
Chairman Secretary

CERTIFICATE OF THE CITY COMMISSION

STATE OF KANSAS }
CITY OF HAYS } SS

The dedications shown on this plat accepted by the City Commission of the City of Hays, Kansas, this 15th day of Nov A.D. 1976.

Stephen Z. Furdyk [Signature]
Mayor City Clerk

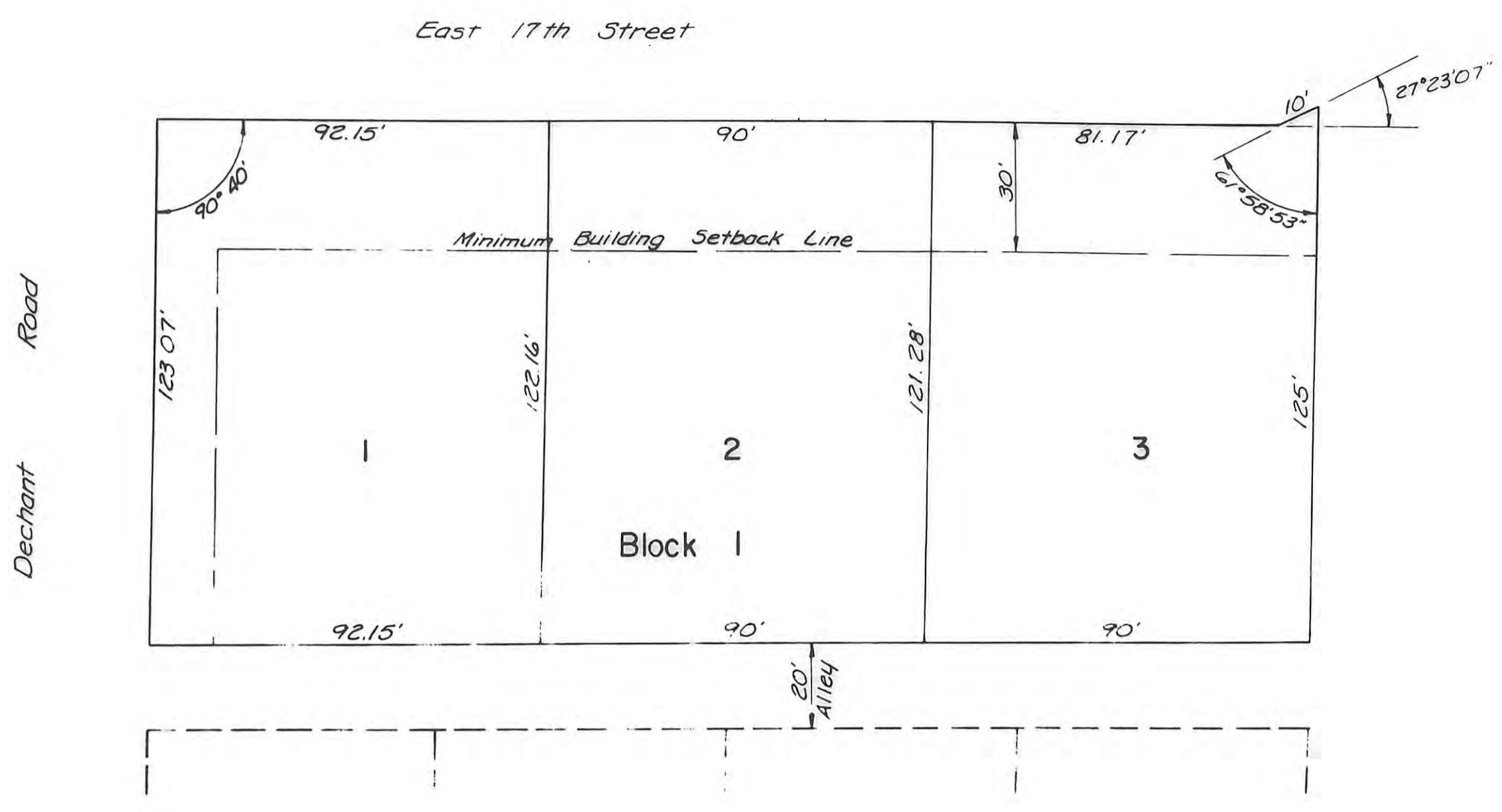
CERTIFICATE OF THE REGISTER OF DEEDS

STATE OF KANSAS }
COUNTY OF ELLIS } SS

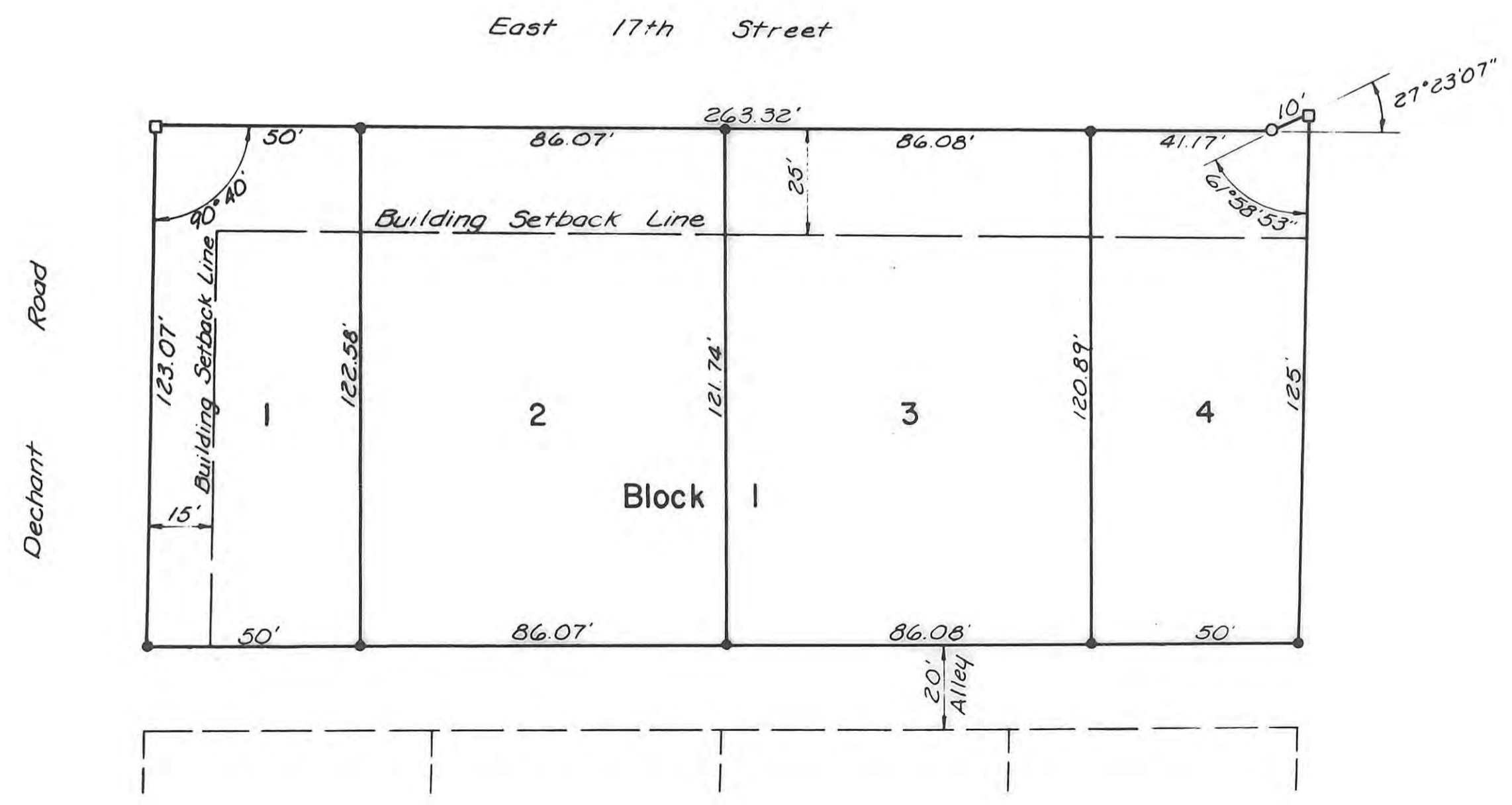
This is to certify that this instrument was filed for record in the Register of Deeds office the 22 day of Dec A.D. 1976 in Book 24 Page 39 at 8:00 o'clock A.M.
Virginia Huggins [Signature]
Register of Deeds Book 279 p 761
Book 279 p 764

Entered on transfer record this _____ day of _____ A.D. 1976

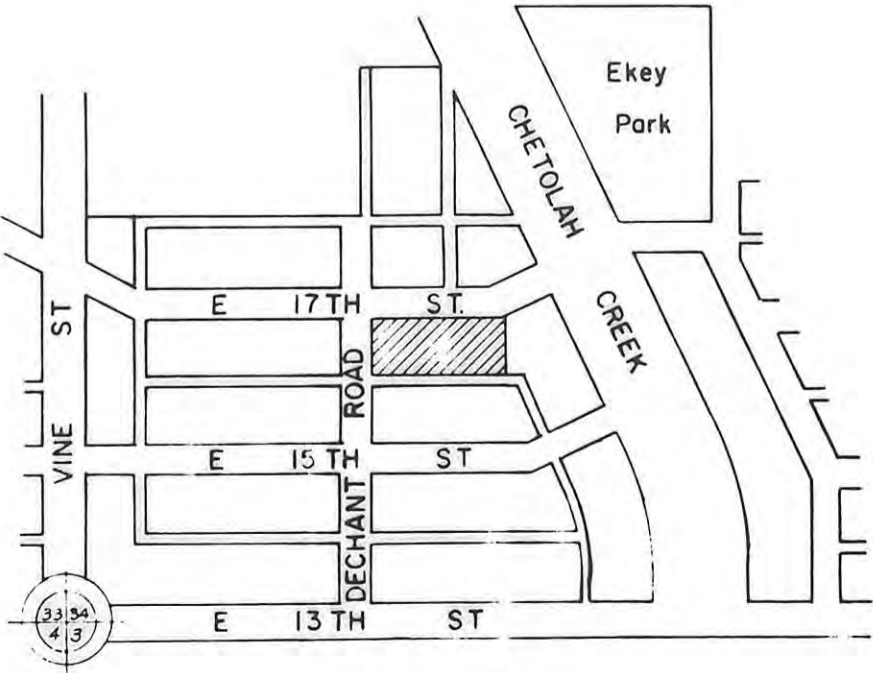
[Signature]
County Clerk



ORIGINAL



FINAL



LOCATION MAP

ORIGINAL PLAT
**LOTS 1, 2, 3 & 4 OF THE REPLAT OF LOTS 1, 2 & 3
OF BLOCK 1, WEILERT'S KNOB HILL**

OCTOBER 1976

HUBERT CASPAR JR
ENGINEERS ARCHITECTS
HAYS KANSAS

THIS IS A DIRECT PHOTOGRAPHIC REPRODUCTION OF THE OFFICIAL INSTRUMENT (RECORDED PLAT).
THIS REPRODUCTION WAS MADE BY BUCHER & WILLIS, CONSULTING ENGINEERS, PLANNERS & ARCHITECTS IN AUGUST, 1979.

- Scale: 1" = 30'
- Pin Set
- Pin Found - 1/2" Rebar
- 5" Dia by 36" Conc. Marker Found

