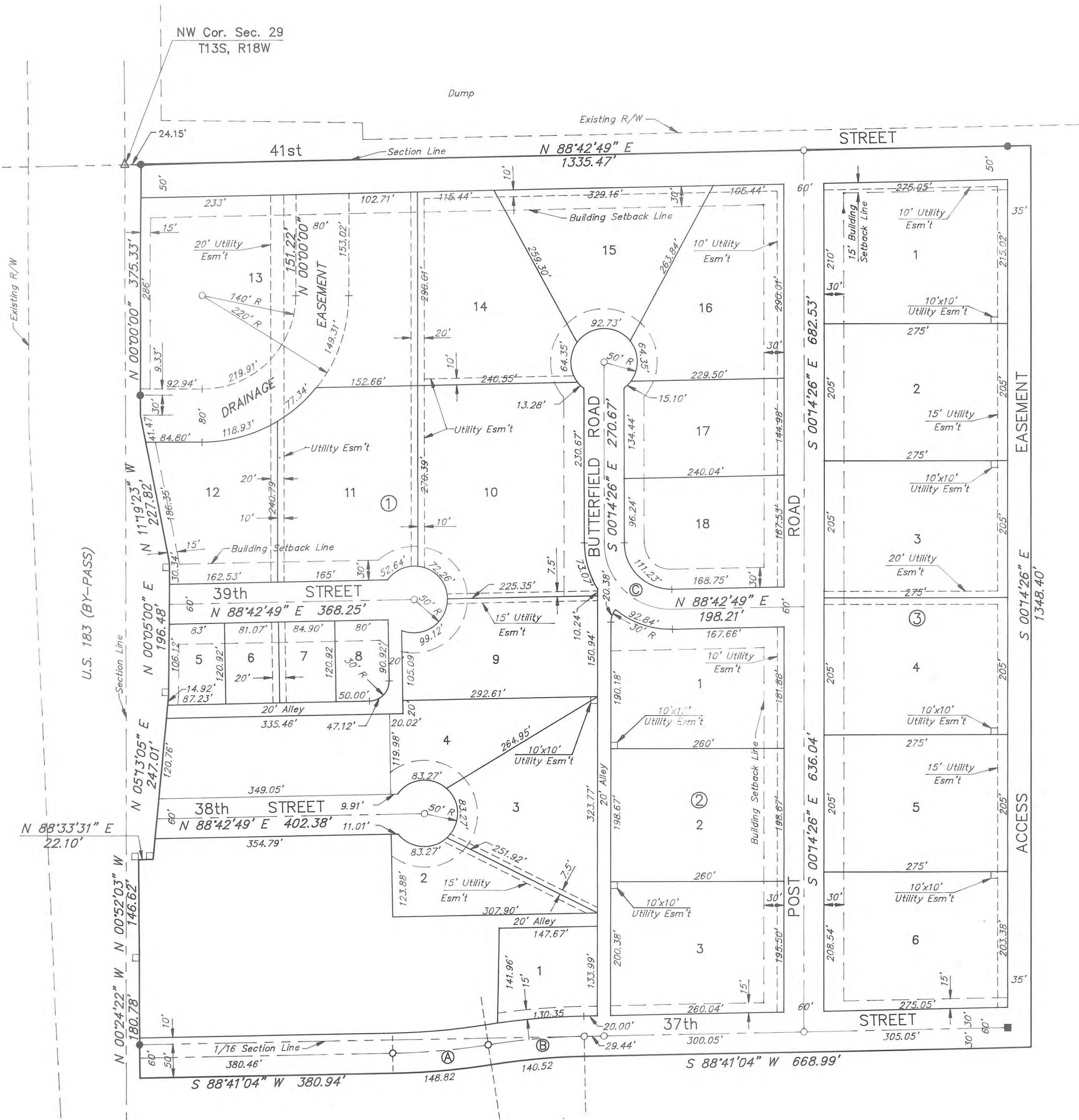


REPLAT OF A PORTION OF WESTRIDGE ADDITION

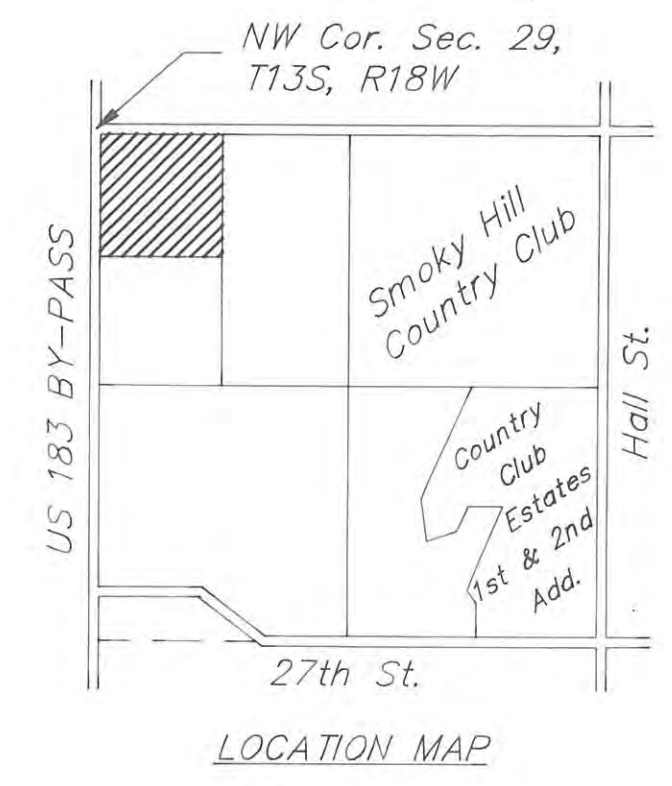
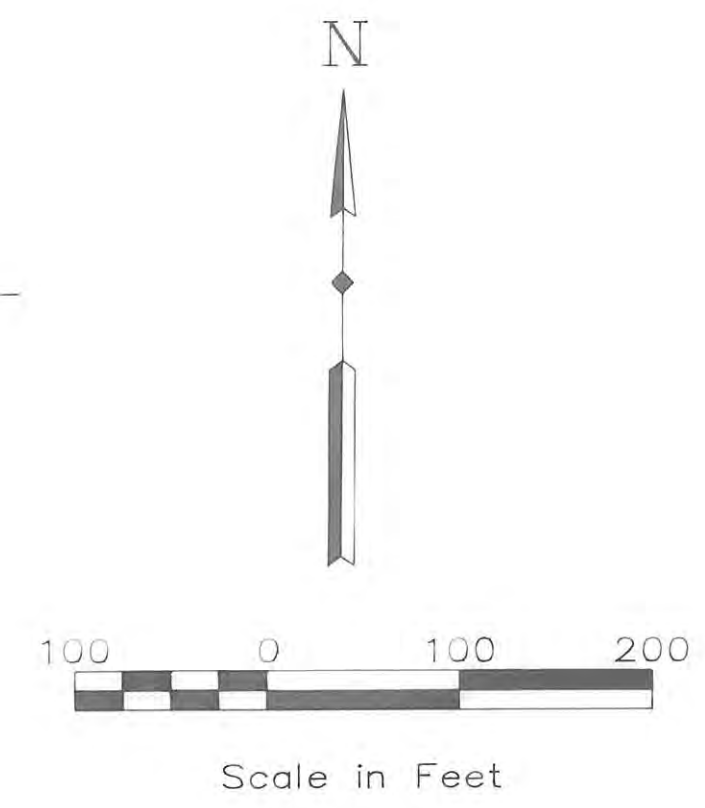
ELLIS COUNTY, KANSAS



LEGEND

- 1/2" Bar Found
- 1/2" Bar Set
- State Highway R/W Monuments

Corrected Plat + Dedication
filed: 07-20-1994 in Bk. 446 P. 145



LEGAL DESCRIPTION:

Block One (1); Block Two (2); Block Three (3); Block Four (4); Lots One (1) thru Eleven (11) of Block Five (5); Lots Five (5) thru Nine (9) of Block Six (6); Block Seven (7); Block Eight (8); all in Westridge Addition to Ellis County, Kansas, located on a part of the Northwest Quarter (NW 1/4) of Section Twenty-nine (29), in Township Thirteen (13) South, Range Eighteen (18) West of the Sixth (6th) Principal Meridian, Ellis County, Kansas.

STREETS & EASEMENTS:

Streets, roads, and alleys as shown on this plat and not heretofore dedicated to and for public use are hereby dedicated. Easements are hereby dedicated for public use, as utility easement right-of-way, which are shown as lying between the dashed lines in widths indicated and as set forth on this plat, and said easements may be employed for the purpose of installing, repairing and maintaining gas lines, electric lines, telephone lines, and all other forms and types of public utilities, now or hereafter used, by the public over, under and along the strips marked "Utility Esm't."

OWNER'S CERTIFICATE:

Know all men by these presents, that we, the undersigned property owners of the land above described have caused the same to be surveyed and platted into Lots, Blocks, Streets, Roads, Alleys and Easements, the same to be known as "Replat of a Portion of Westridge Addition," in Ellis County, Kansas. The Streets, Roads, and Alleys are hereby dedicated to and for the use of public, and easements as indicated on the accompanying plat are hereby granted to the public for the purpose of constructing, operating, maintaining, and repairing all public utilities.

CURVE DATA				
CURVE	Δ	R	T	Lc
(A)	7°56'00"	1044.83	72.45	144.66
(B)	7°56'00"	1044.83	72.45	144.66
(C)	91°02'45"	100.00	101.84	158.90

APPROVALS:

This replat of a portion of Westridge Addition has been submitted to and approved by the Hays Planning Commission this 27 day of Dec., 1993.

Larry Dault
CHAIRMAN
Christie J. Chambers
SECRETARY

Richard C. Chambers
Richard C. Chambers
Christie J. Chambers
Christie J. Chambers

The dedications shown on this plat accepted by the City Commission of the City of Hays, Kansas, this 13 day of January, 1994.

Elmer Phelps
MAYOR

ATTEST: *Carol Ann Strick*, City Clerk

The dedications shown on this plat accepted by the County Commission of Ellis County, Kansas, this 30 day of January, 1994.

Samuel S. Siefert
CHAIRMAN

ATTEST: *Sam J. McCullis*, County Clerk

NOTARY CERTIFICATE:

State of Kansas, County of Ellis, ss: Be it remembered that on this 10 day of December, 1993, before me, a Notary Public in and for said County and State, came Richard C. Chambers and Christie J. Chambers to me personally known to be the same person who executed the foregoing instrument of writing and duly acknowledged the execution of same. In testimony whereof, I have hereunto set my hand and affixed my notarial seal, the day and year above written.

Vickie Rolleder
Notary Public

My Commission Expires: 2-22-97

RECORDED:

State of Kansas, County of Ellis, ss: This is to certify that this instrument was filed for record in the Register of Deeds Office on the 20 day of Dec., 1994 in Book Plat. C-338.

Harvey Ruder
REGISTER OF DEEDS
Harvey Ruder
DEPUTY

SURVEYOR'S CERTIFICATE:

I, Harvey Ruder, a licensed Professional Engineer and Registered Land Surveyor in the State of Kansas, do hereby certify this plat to be true and correct to the best of my knowledge.

Harvey Ruder
Harvey Ruder
12-13-93
Date

BUCHER, WILLIS & RATLIFF
ENGINEERS ■ PLANNERS ■ ARCHITECTS