

# WESTWOOD PATIO HOMES

ELLIS COUNTY, KANSAS

**LEGAL DESCRIPTION:**

A tract of land in the Northeast one-quarter of Section 24, Township 13 South, Range 19 West of the Sixth Principal Meridian and further described as follows:

Beginning at a point on the North line of Section 24, a distance of 372.30 feet West of the Northeast corner of Section 24; thence West along the North line of Section 24, a distance of 200.00 feet; thence South parallel to the East line of Section 24, a distance of 1,053.80 feet; thence East parallel to the North line of Section 24, a distance of 572.30 feet; thence North along the East line of Section 24, a distance of 819.80 feet; thence West parallel to the North line of Section 24, a distance of 372.30 feet; thence North parallel to the East line of Section 24, a distance of 234.00 feet to the point of beginning.

**STREETS AND EASEMENTS:**

Streets and easements shown on this plat and not heretofore dedicated for public and private use are hereby dedicated for public and private use and may be employed for the purpose of installing, repairing and maintaining all public and private utilities now or hereafter.

State of Kansas, County of Ellis, ss

This is to certify that the undersigned is the owner of the land described in the plat, and that he has caused the same to be surveyed and subdivided as indicated thereon, for the uses and purposes herein set forth, and does hereby acknowledge and adopt the same under the style and title thereon indicated.

All street Rights-of-Way as shown on this plat are hereby dedicated to the public. An easement or license to the public to locate, construct and maintain or authorize the location, construction and maintenance of poles, wires, conduits, water, gas and sewer pipes or required drainage channels or structures upon the area marked for easements on this plat is hereby granted.

Given under my hand at Hays, Kansas this 21 day of October, 1980.

METRO HOMES, INC. *Robert M. Mollohan* PRESIDENT

State of Kansas, County of Ellis, ss

Be it remembered that on this 21st day of October, 1980 before me the undersigned Notary Public, duly commissioned, in and for the county and state aforesaid came Robert V. Mollohan, personally known to me to be the same person whose name is subscribed to the foregoing instrument as the owner, appeared before me this day in person and acknowledged that he signed the plat as his own free and voluntary act for the uses and purposes herein set forth.

Given under my hand and notarial seal this 21st day of October, 1980.



*Laura K. Quint*  
Notary Public

My commission expires:

**SURVEYOR'S CERTIFICATE:**

I, a licensed land surveyor in the State of Kansas, do hereby certify this plat to be true and correct to the best of my knowledge. Said survey was completed 25 June 1980.

*Donald J. Branda*  
Donald J. Branda, L.S.

This plat of Westwood Patio Homes has been submitted to and approved by the Planning Commission this 18th day of August, 1980.

*Alan Stuchlik* Secretary  
*Robert Nicholas* Chairman

The dedications shown on this plat accepted by the City Commission of the City of Hays, Kansas, this 15th day of September, 1980.

*Mike Billinger*  
Mayor

ATTEST:  
*Anita Schubert*  
City Clerk

The dedication shown on this plat is accepted by the County Commission of Ellis County, Kansas this 6th day of October, 1980.

*Bliss C. Doolittle* ATTEST:  
*Harold G. Kraus*  
*Eugene Schneider*  
County Clerk

The above and foregoing plat is hereby approved by the County Attorney of Ellis County, Kansas.

Co. October, 1980  
*William W. Jeter*  
County Attorney

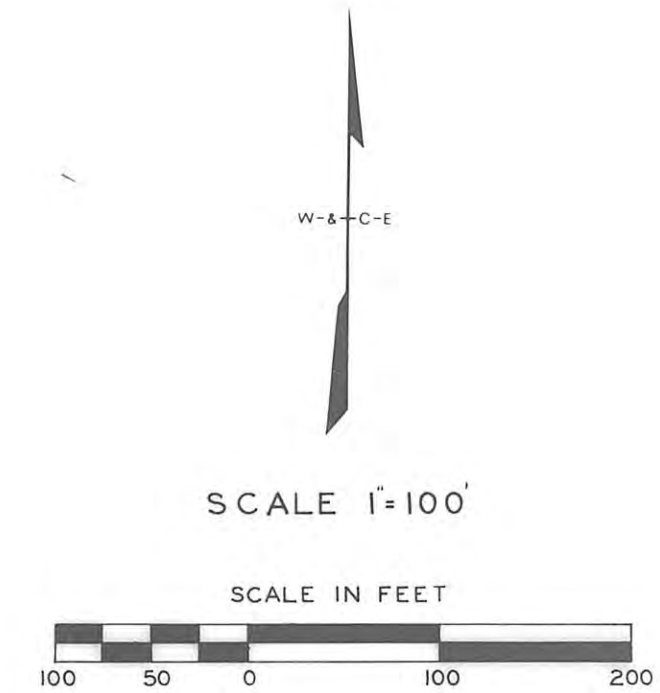
State of Kansas, County of Ellis, ss

This is to certify that this instrument was filed for record in the Register of Deeds office on the 28 day of October, 1980 in Book *278* #20

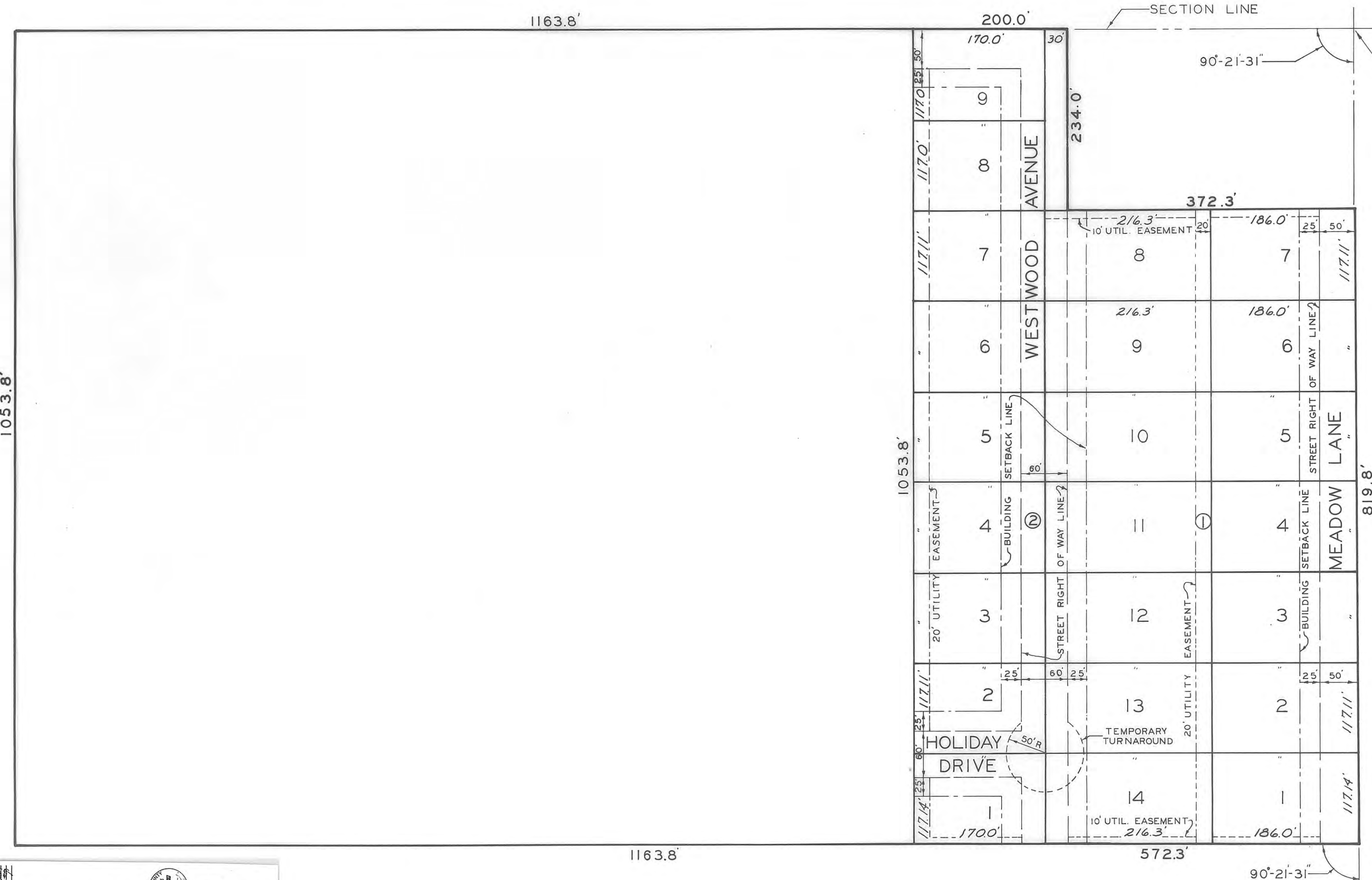
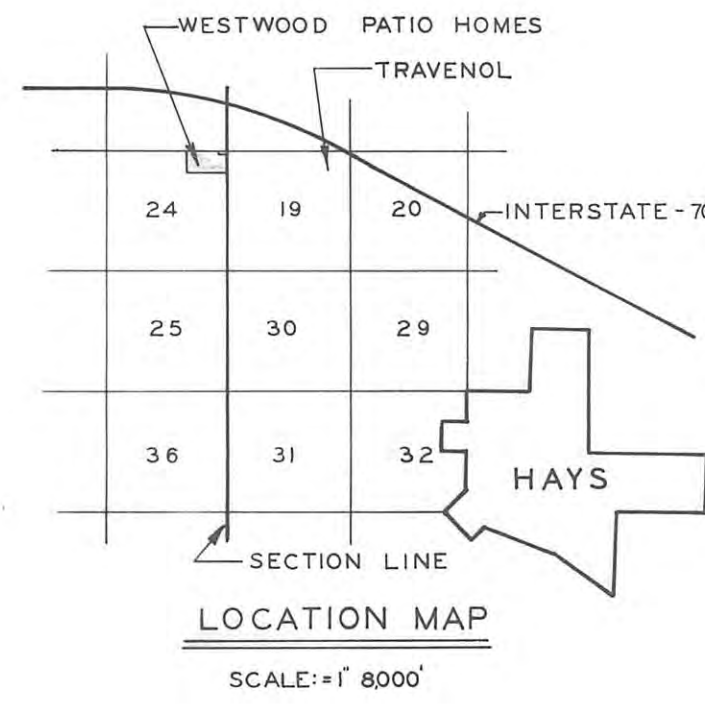
*Virginia Heering* Register of Deeds  
*Rose Ann Rupp* Deputy

DESIGNED BY	H.H.M.	
DRAWN BY	A.E.P.	
CHECKED BY	D.J.B.	
DATE	JUNE 80	

JOB NO.	80-631
WESTWOOD PATIO HOMES	
HAYS - KANSAS	
SHEET 1 OF 1	



ACREAGE - 40.00



RESOLUTION OF THE BOARD OF ELLIS COUNTY COMMISSIONERS

WHEREAS, the Board of Ellis County Commissioners, in and for the County and State of Kansas, do hereby certify that the following instrument was filed for record in the Register of Deeds office on the 28 day of October, 1980 in Book 278 #20

NOW, THEREFORE, BE IT RESOLVED AND ORDERED, by the Board of Ellis County Commissioners, that the following instrument be recorded in the public records of Ellis County, Kansas, and that the County Clerk be and he is hereby authorized to cause the same to be so recorded.

Approved this 6th day of October, 1980 by the Board of Ellis County Commissioners.

*W. W. Jeter* Chairman  
*Mike Billinger* Mayor  
*Anita Schubert* City Clerk

ELLIS COUNTY COMMISSIONERS

WILSON & COMPANY ENGINEERS & ARCHITECTS HAYS - KANSAS

BUN 074 USE 973

*Plat & Dedi - 304 064 709*  
*Resolution 304 064 712*  
*Resolution 304 064 718*  
*Resolution 674 Records 973*