



STATE OF KANSAS }
ELLIS COUNTY }
This instrument was filed for record

FEB 27 1962

9:15 o'clock A.M. recorded in
Book No. of 117 page 117
Fees 2.00 Register of Deeds
3.80 Trans. fee

Ordinance No. 973
Dec. 13 1965
Vacating area 50' x 100'

Scale 1 inch = 50'

Tract in the North West Quarter of Section Seven (7), Township Fourteen (14) S. Range Sixteen (16) W. of 6th. P.M. Ellis County Kansas.

Description

Beginning at the South East Corner of Lot Three (3), in A.J. Pfeifer's First Addition, to Victoria Kansas, thence West 154 Feet along the South Line of Lots Three (3) & Four (4), in said A.J. Pfeifer's First Addition, to intersect the East Line of Grant Street, thence South 360 Feet along the East Line of Grant Street to intersect the North Line of Seventh Street, thence East 154 Feet along the North Line of Seventh Street, to intersect the West Line of Hickory Street, thence North 360 Feet along the West Line of Hickory Street to the place of beginning.

Also beginning at a point on the West Line of Grant Street, 45 Feet West and 30 Feet North of the South West Corner of Lot Four (4), in A.J. Pfeifer's First Addition, to Victoria Kansas, thence South 390 Feet along the West Line of Grant Street, to intersect the North Line of Seventh Street, thence West 100 Feet along the North Line of Seventh Street, thence North 390 Feet parallel to the West Line of Grant Street, thence East 100 Feet parallel to the North Line of Seventh Street, to the place of beginning.

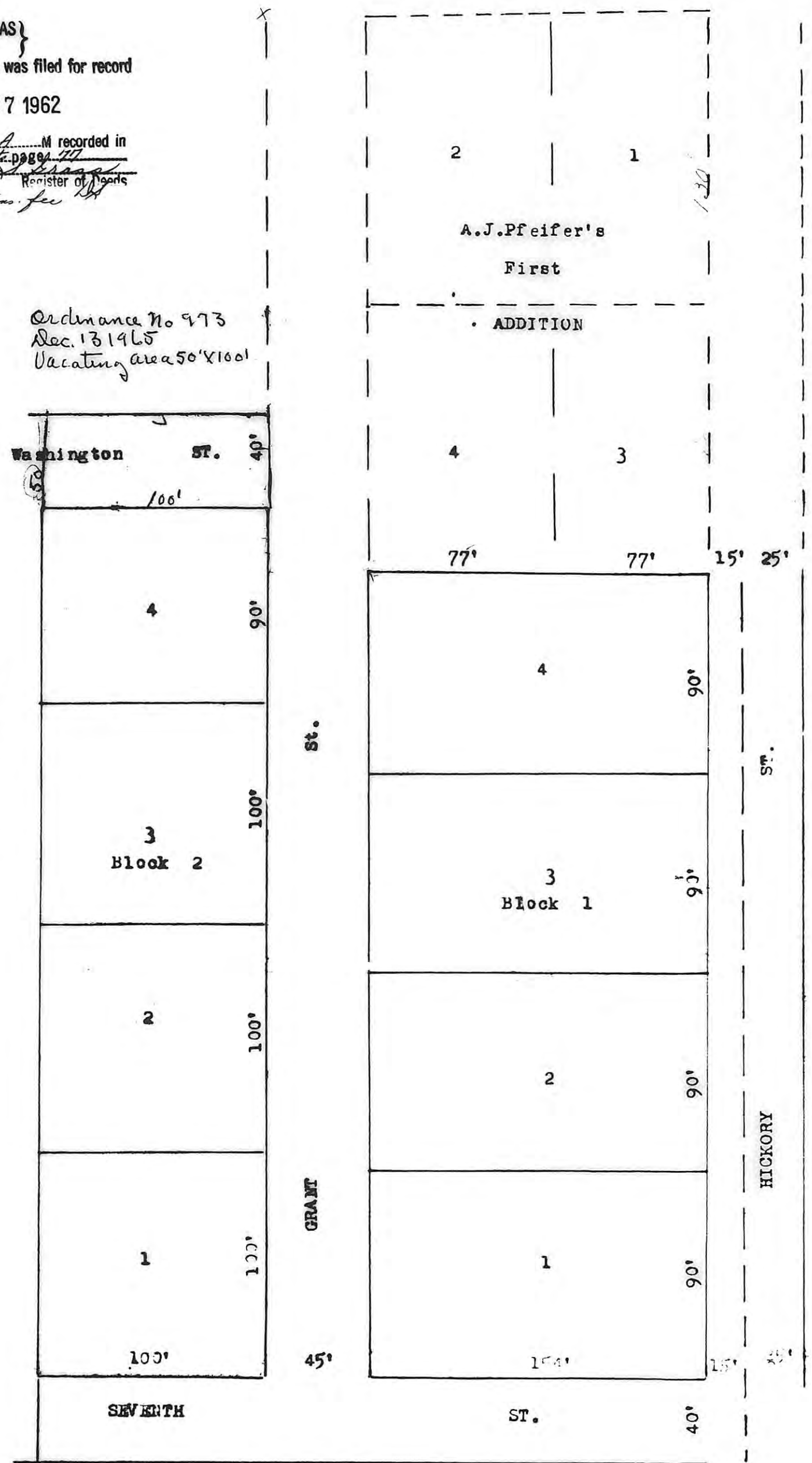
I hereby certify that this Plat was submitted to the Governing Body, of The City Of Victoria Kansas and by such Governing Body duly approved this 14 day of, February 1962.

[Signature]
City Clerk.

ENGINEER'S CERTIFICATE

I C.J. Loreditsch Registered Professional Engineer do hereby certify that this Plat to be true and correct to the best of my knowledge.

[Signature]
C.J. Loreditsch P.E.



PLAT OF
YOUNGER'S ADDITION
TO
VICTORIA KANSAS

THIS IS A DIRECT PHOTOGRAPHIC REPRODUCTION OF THE OFFICIAL INSTRUMENT (RECORDED PLAT).

THIS REPRODUCTION WAS MADE BY BUCHER & WILLIS, CONSULTING ENGINEERS, PLANNERS & ARCHITECTS IN JUNE 1979