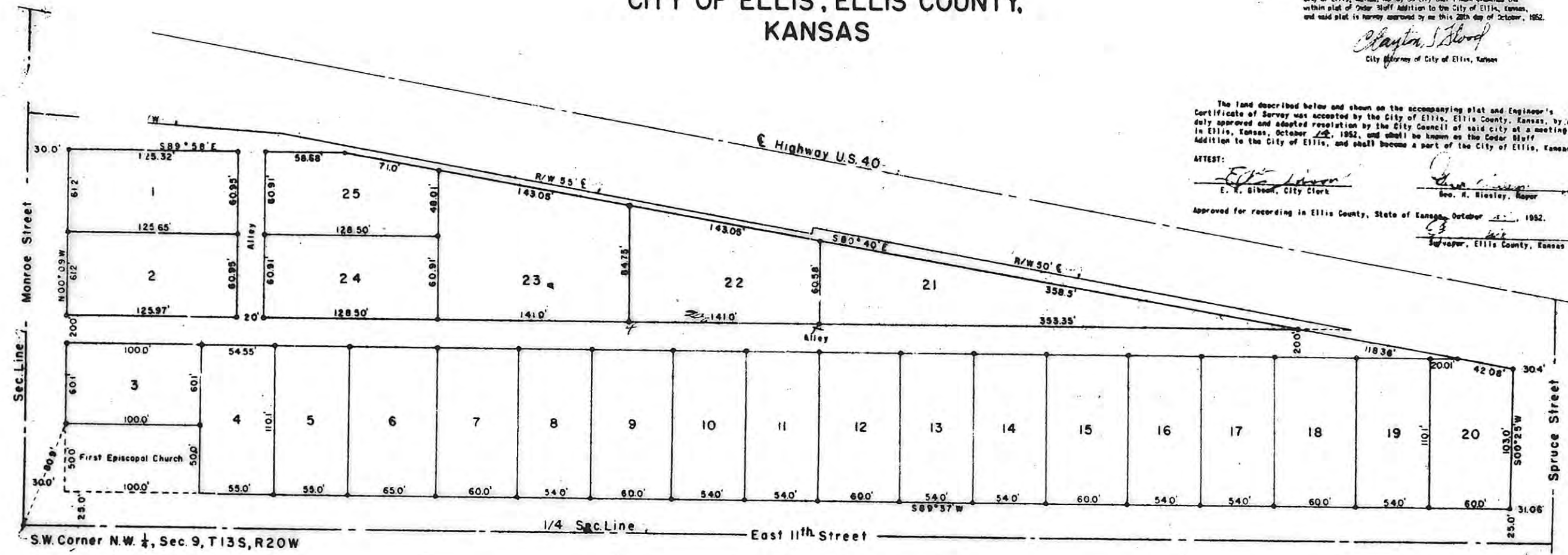


PLAT OF CEDAR BLUFF ADDITION CITY OF ELLIS, ELLIS COUNTY, KANSAS

ATTORNEY'S CERTIFICATE
I, Clayton S. Blood, the undersigned, City Attorney for the City of Ellis, Kansas, hereby certify that I have examined the within plat of Cedar Bluff Addition to the City of Ellis, Kansas, and said plat is hereby approved by me this 28th day of October, 1952.
Clayton S. Blood
City Attorney of City of Ellis, Kansas

The land described below and shown on the accompanying plat and Engineer's Certificate of Survey was accepted by the City of Ellis, Ellis County, Kansas, by a duly approved and adopted resolution by the City Council of said city at a meeting in Ellis, Kansas, October 12, 1952, and shall be known as the Cedar Bluff Addition to the City of Ellis, and shall become a part of the City of Ellis, Kansas.
ATTEST:
E. R. Gibson
E. R. Gibson, City Clerk
Geo. H. Hiesley, Mayor
Approved for recording in Ellis County, State of Kansas, October 12, 1952.
Geo. H. Hiesley
Mayor, Ellis County, Kansas



STATE OF KANSAS
ELLIS COUNTY
This instrument was filed
NOV 19 1952
9:30 o'clock A.M. records
2 of Plat Page 22
Fees \$25
Register of Deeds

SCALE IN FEET
0 40 80 120 160 200
This is a division of that part of Section 9, Township 13 South, Range 20 West of the 6th Principal Meridian within the corporate limits of the City of Ellis, Ellis County, Kansas, which is particularly described in the accompanying Engineer's Certificate of Survey.
The United States of America, proprietors of the above described tract of land have caused same to be divided in the manner shown by this plat, which addition shall hereafter be known as Cedar Bluff Addition to the City of Ellis.
The alleys shown on this plat and the concrete improvements constructed by the Government in Monroe Street and East Eleventh Street are hereby dedicated for public use.
The land and improvements thereon covered by this plat were declared excess by the United States Department of Interior, Bureau of Reclamation, to the General Services Administration and having been determined surplus to the needs of the United States of America, disposal will be made pursuant to the provisions of the Federal Property and Administrative Services Act of 1949, approved June 30, 1949, Public Law 152, 81st Congress, (68 Stat., Chap. 228) as amended, and regulations and orders promulgated thereunder.
IN WITNESS WHEREOF, the United States of America, acting by and through the Administrator of the General Services Administration has caused these presents to be executed in its name and on its behalf by William A. Holloway, Regional Director of the General Services Administration, Region 8, Kansas City, Missouri, this 23 day of October, 1952.
STATE OF MISSOURI)
COUNTY OF JACKSON) SS.
I, *William A. Holloway*, a Notary Public, appeared William A. Holloway, to me personally known, who, being duly sworn, did instrument was signed on behalf of the United States of America by duly delegated authority, and that the said William A. Holloway acknowledged said instrument to be the free act and deed of the United States of America.
IN WITNESS WHEREOF, I have hereunto set my hand and official seal of the County and State aforesaid on the date last above written.
My Commission expires: *October, 1953*

I, Glenn E. Thomas, being a licensed professional Engineer in the State of Kansas, do hereby certify that this plat of the Cedar Bluff Subdivision of the City of Ellis, Ellis County, Kansas, is a true and accurate record of a survey made under my direction on September 10, 1952. The boundaries of said survey are as follows: Beginning at a point on the East boundary line of Monroe Street, said point being 80.9 feet Northeast of the West 1/4 corner of Section Nine (9), Township Thirteen (13) South, Range Twenty (20) West, and 300 feet East of the West line of said section, and proceeding thence North 00°09' West 202.5 feet parallel to the West line of said section, thence South 89°58' East 204.0 feet, thence South 80°40' East 876.05', thence South 00°29' West 103.0 feet to a point on the north line of East Eleventh Street, thence South 89°37' West 867.0 feet, thence North 00°09' West 50.0 feet, thence South 89°37' West 184.0 to the place of beginning.
Glenn E. Thomas

THIS IS A DIRECT PHOTOGRAPHIC REPRODUCTION OF THE OFFICIAL INSTRUMENT (RECORDED PLAT).
THIS REPRODUCTION WAS MADE BY BUCHER & WILLIS, CONSULTING ENGINEERS, PLANNERS & ARCHITECTS IN JUNE 1979