

COUNTRY FIVE SUBDIVISION

A PART OF THE SOUTHWEST 1/4 SECTION 1, TOWNSHIP 14 SOUTH, RANGE 18 WEST, ELLIS COUNTY, KANSAS

LEGAL DESCRIPTION:

COMMENCING AT THE STONE MARKING THE SOUTHWEST CORNER OF THE SOUTHWEST 1/4 SECTION 1, TOWNSHIP 14 SOUTH, RANGE 18 WEST, ELLIS COUNTY, KANSAS, THENCE NORTH ALONG THE WEST LINE OF SAID 1/4 SECTION 1, A DISTANCE OF 966.13' FOR THE POINT OF BEGINNING, THENCE EAST AT AN ANGLE OF 90° A DISTANCE OF 507.33', THENCE SOUTH PARALLEL WITH THE SAID WEST LINE A DISTANCE OF 284.99', THENCE SOUTHWESTERLY AT AN ANGLE OF 99°, A DISTANCE OF 2,174.59' AND PARALLEL WITH THE CENTERLINE OF THE UNION PACIFIC RAILROAD, THENCE NORTH ALONG THE EAST LINE SAID 1/4 SECTION 1, A DISTANCE OF 2,356.91', TO THE STONE MARKING THE NORTHEAST CORNER OF THE SAID 1/4 SECTION 1, THENCE WEST ALONG THE NORTH LINE OF SAID 1/4 SECTION 1, A DISTANCE OF 1,812.55', THENCE SOUTH AND PARALLEL WITH THE WEST LINE OF SAID 1/4 SECTION 1, A DISTANCE OF 208.71', THENCE WEST PARALLEL WITH THE NORTH LINE OF SAID 1/4 SECTION 1, A DISTANCE OF 1,043.55' TO A POINT ON THE SAID WEST LINE OF SAID 1/4 SECTION 1, 208.71' SOUTH OF NORTHWEST CORNER OF THE SAID 1/4 SECTION 1, THENCE SOUTH ALONG SAID WEST LINE, A DISTANCE OF 1,487.28' TO THE POINT OF BEGINNING, CONTAINING 121.46 ACRES

DEDICATION:

WE THE UNDER SIGNED OWNERS OF THE ABOVE DESCRIBED PROPERTY, HAVE CAUSED THE SAME TO BE PLATTED INTO LOTS, DRIVES, ROADS, PARKS, AND EASEMENTS. ALL ROADS, DRIVES AND PARKS ARE DEDICATED TO THE PUBLIC AND ALL EASEMENTS FOR UTILITY PURPOSES.

Angela Leiker
ANGELA LEIKER, OWNER

NOTARY PUBLIC:

STATE OF KANSAS)
COUNTY OF ELLIS) SS

BE IT REMEMBERED THAT ON THIS 15TH DAY OF August A.D. 1977, BEFORE ME A NOTARY PUBLIC IN AND FOR SAID COUNTY AND STATE, CAME ANGELA LEIKER TO BE PERSONALLY KNOWN TO BE THE SAME PERSONS WHO EXECUTED THE FOREGOING INSTRUMENT OF WRITING AND DULY ACKNOWLEDGED THE EXECUTION OF SAME IN TESTIMONY WHEREOF I HERETO SET MY HAND AND AFFIXED MY NOTARIAL SEAL THE DAY AND YEAR ABOVE WRITTEN.

Herbert H. Callon
NOTARY PUBLIC
MY COMMISSION EXPIRES
March 15, 1980

ENGINEER'S CERTIFICATION:

I DO HEREBY CERTIFY THAT I DID SURVEY AND PREPARE THIS PLAT. THE INFORMATION SHOWN IS TRUE AND CORRECT TO THE BEST OF MY KNOWLEDGE AND BELIEF.

Herbert H. Callon
HERBERT H. CALLON
KANSAS LICENSED PROFESSIONAL
ENGINEER NO 1628

PLANNING COMMISSION:

STATE OF KANSAS)
CITY OF HAYS) SS

THIS PLAT OF COUNTRY FIVE SUB-DIVISION HAS BEEN SUBMITTED TO AND APPROVED BY THE HAYS PLANNING COMMISSION THIS 15 DAY OF Aug A.D. 1977.

Steven D. Powell *Robert J. Bender*
Acting SECRETARY CHAIRMAN

COUNTY COMMISSION:

STATE OF KANSAS)
COUNTY OF ELLIS) SS

THE DEDICATIONS SHOWN ON THIS PLAT ACCEPTED BY THE COUNTY COMMISSION OF THE COUNTY OF ELLIS, KANSAS, THIS 22 DAY OF August A.D. 1977.

Emerson J. Rome *Virginia Hays*
COUNTY CLERK CHAIRMAN

REGISTER OF DEEDS:

STATE OF KANSAS)
COUNTY OF ELLIS) SS

THIS IS TO CERTIFY THAT THIS INSTRUMENT WAS FILED FOR RECORD IN THE REGISTER OF DEEDS OFFICE ON THE 19 DAY OF September A.D. 1977, IN BOOK 284 PAGE 279

Plat & Dedication Book 284 page 266 *Virginia Hays*
Resubmission Book 284 page 271 REGISTER OF DEEDS

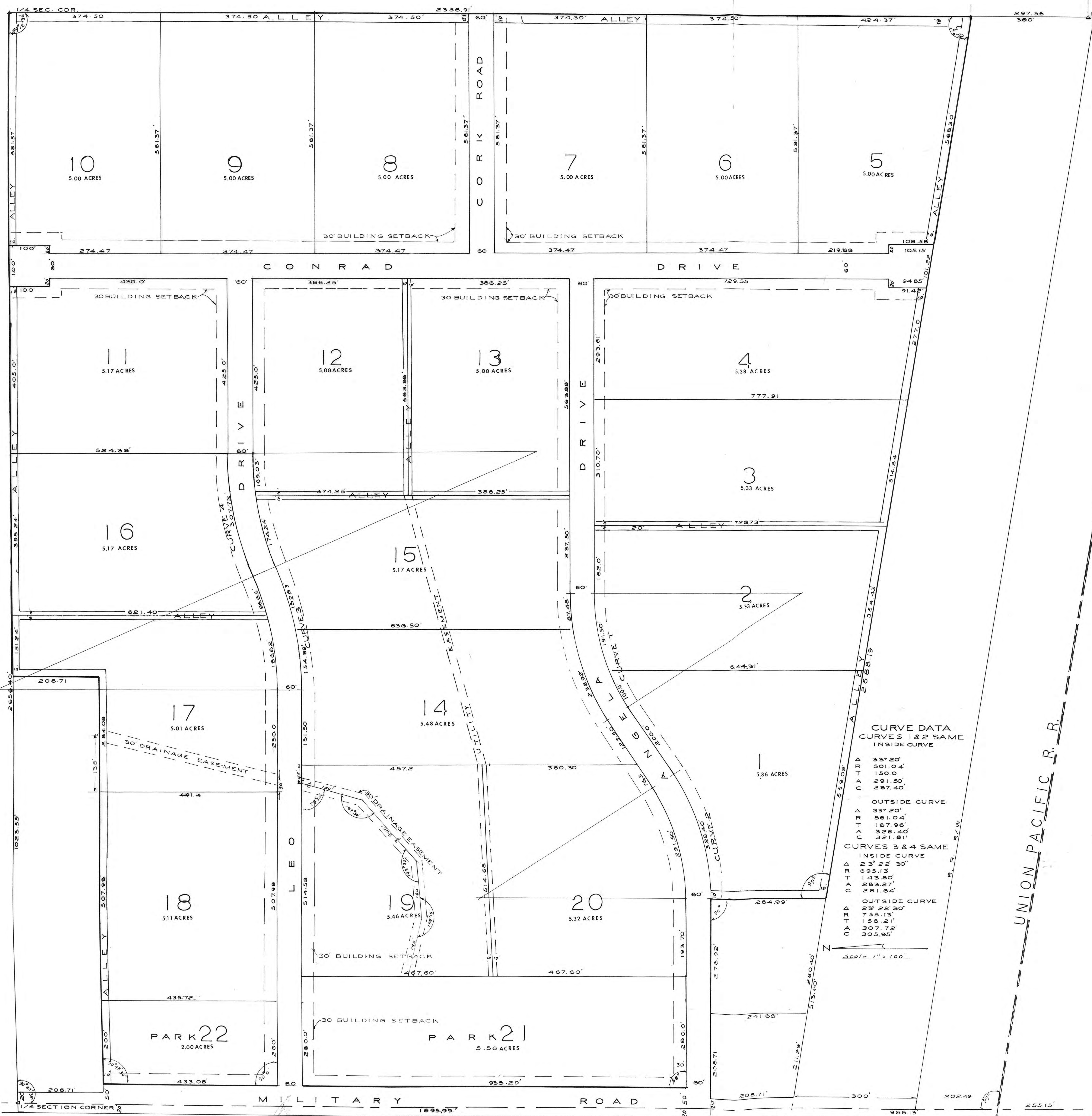
COUNTY ATTORNEY:
APPROVED THIS 22ND DAY OF AUGUST 1977.

Virginia Hays
COUNTY ATTORNEY

COUNTRY FIVE SUBDIVISION

NOTE:
SUBDIVIDER SHALL GRADE, DRAIN AND SURFACE ALL THROUGHFARES BEFORE THE COUNTY TAKES THEM OVER.

SECTION CORNER
SOUTHWEST CORNER
SECTION 1, TWP 14S, R18W.



CURVE DATA
CURVES 1 & 2 SAME
INSIDE CURVE

Δ	33° 20'
R	501.04'
T	150.0'
A	291.50'
C	267.40'

OUTSIDE CURVE

Δ	33° 20'
R	561.04'
T	167.96'
A	326.40'
C	321.81'

CURVES 3 & 4 SAME
INSIDE CURVE

Δ	23° 22' 30"
R	695.13'
T	143.80'
A	283.27'
C	281.64'

OUTSIDE CURVE

Δ	23° 22' 30"
R	755.13'
T	156.21'
A	307.72'
C	305.95'

Scale 1" = 100'

