

PLAT OF GOLDEN BELT FIRST ADDITION

HAYS, KANSAS

THIS IS A DIRECT PHOTOGRAPHIC REPRODUCTION OF THE OFFICIAL INSTRUMENT (RECORDED PLAT).

THIS REPRODUCTION WAS MADE BY BUCHER & WILLIS, CONSULTING ENGINEERS, PLANNERS & ARCHITECTS IN AUGUST, 1979.

Description:

A tract of land in the Northeast Quarter (NE1/4) of Section Thirty-four (34), Township Thirteen (13) South, Range Eighteen (18) West of the 6th Principal Meridian, Ellis County, Kansas, and more particularly described as follows:

Beginning at a point on the West line of said Northeast Quarter (NE1/4), said point being 340 feet South of the Northwest corner of said NE1/4, thence East parallel to the North line of said NE1/4, a distance of 588 feet; thence with an angle of 52°29'04" to the left, a distance of 378.35 feet; thence with an angle of 37°04'21" to the left on a line parallel to the West line of said NE1/4, a distance of 40 feet to the North line of said NE1/4; thence with an angle of 89°33'25" to the right along the North line of said NE1/4, a distance of 289.36 feet; thence with an angle of 90°21'15" to the right on a line parallel to the East line of said NE1/4, a distance of 370 feet; thence with an angle of 89°38'45" to the right, a distance of 40.90 feet; thence with an angle of 89°33'25" to the left, a distance of 998.26 feet; thence with an angle of 89°33'25" to the right, a distance of 130 feet; thence with an angle of 89°33'25" to the left, a distance of 123.50 feet; thence with an angle of 89°26'40" to the right, a distance of 935.04 feet to the East line of said NE1/4; thence North along the East line of said NE1/4, a distance of 1153.61 feet to the point of beginning. Said tract contains 30.887 acres more or less.

STREETS, EASEMENTS AND PUBLIC PARKS

Streets, boulevards, drives, alleys and pedestrian walkways as shown on this plat and not heretofore dedicated to and for public use are hereby so dedicated.

Easements are hereby dedicated for public use, as utility easement right-of-way which are shown as lying between the dashed lines in widths indicated and as set forth on this plat, and said easements may be employed for the purpose of installing, repairing and maintaining gas lines, electric lines, telephone lines and all other forms and types of public utilities, new or hereafter used, by the public over, under and along the strips marked "Utility Esm't."

Public park area set out as Block 7 of this plat and not heretofore dedicated to and for public use is hereby so dedicated.

OWNER'S CERTIFICATE

Know all men by these presents, that we, the undersigned property owners of the land above described, have caused the same to be surveyed and platted into lots, blocks, streets, alleys, easements, public parks and pedestrian walkways, the same to be known as Golden Belt First Addition to the City of Hays, in Ellis County, Kansas. The streets, alleys, public parks and pedestrian walkways are hereby dedicated to and for the use of the public, and easements as indicated on the accompanying plat are hereby granted to the public for the purpose of constructing, operating, maintaining and repairing all public utilities.

ATTEST: WESTERN PLAINS SERVICE CORP., INC.

James Desbien, Secretary By Oren M. Windholz, President

NOTARY CERTIFICATES

State of Kansas, County of Ellis, ss

Be it remembered that on this 12th day of June, 1975, before me, a notary public in and for said County and State, came Oren M. Windholz, President, and James Desbien, Secretary, of Western Plains Service Corp., Inc., to me personally known to be the same persons who executed the foregoing instrument of writing and duly acknowledged the execution of same. In testimony whereof, I have hereunto set my hand and affixed my notarial seal the day and year above written.

Shirley Kappeler, Notary Public

My Commission Expires Feb. 28, 1979

APPROVALS:

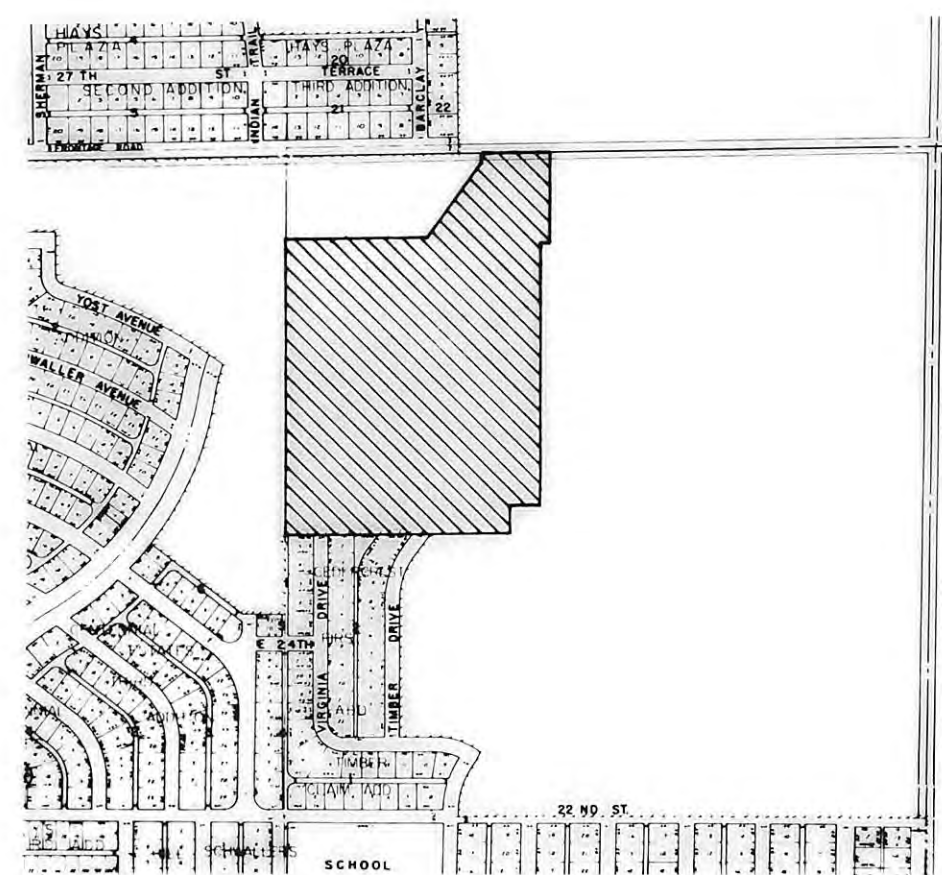
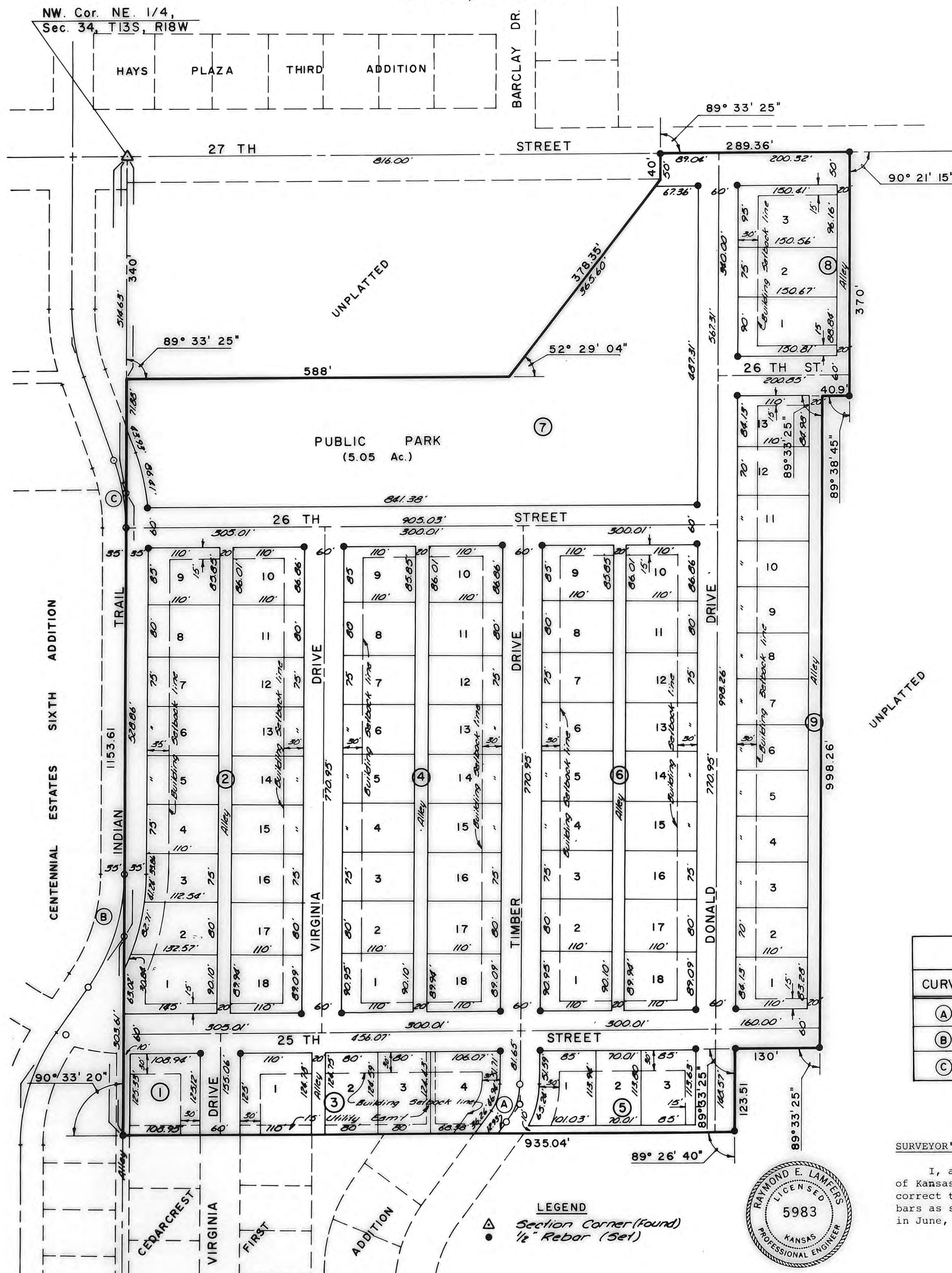
This plat of GOLDEN BELT FIRST ADDITION has been submitted to and approved by the City of Hays Planning Commission this 16th day of June, 1975.

Steven D. Powell, Secretary; James M. Cullick, Chairman

The dedication shown on this plat is accepted by the City Commission of the City of Hays, Kansas, this 21st day of June, 1975.

ATTEST: CITY OF HAYS, KANSAS

Arvid S. Johnston, City Clerk; Daniel J. Cypse, Mayor



CURVE DATA				
CURVE	Δ	R	T	Lc
(A)	38°25'20"	100'	34.84'	67.06'
(B)	34°44'18"	300'	93.84'	181.89'
(C)	19°54'57"	300'	52.67'	104.28'

SURVEYOR'S CERTIFICATE:

I, a licensed professional engineer in the State of Kansas, do hereby certify this plat to be true and correct to the best of my knowledge; and that all iron bars as shown have been accurately set. Survey completed in June, 1975.



LEGEND
 Δ Section Corner (Found)
 ● 1/2" Rebar (Set)

STATE OF KANSAS
 ELLIS COUNTY
 This instrument was filed for record
 JUL 7 1975
 9:30 o'clock A.M. recorded in
 Plat. & Ord. 273 062 page 15
 Register of Deeds
 Ordinance 273 062 page 21
 Plat. & Ord. 273 062 page 21
 Res. Ord. 273 062 page 21