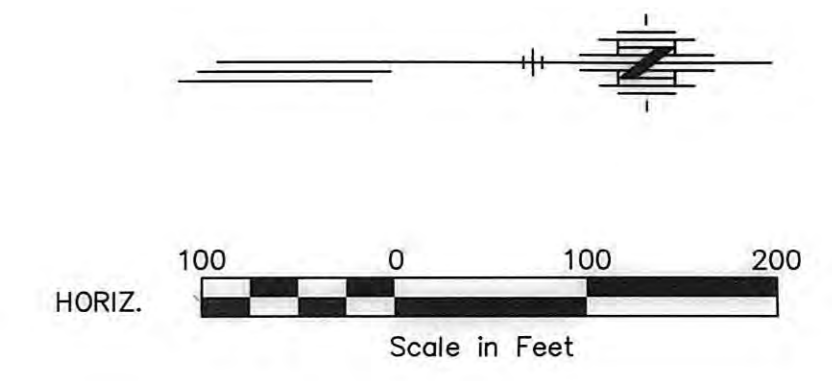
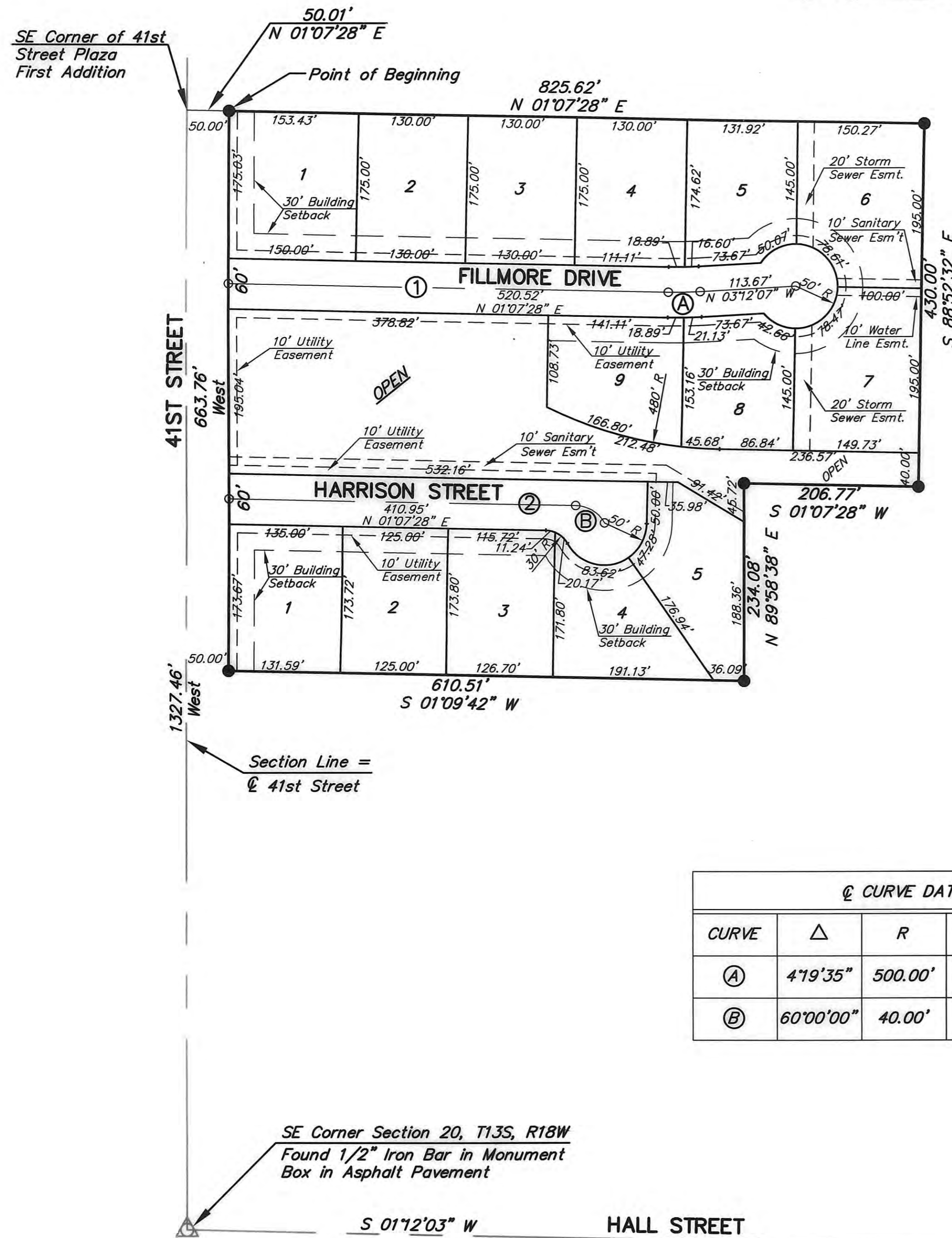


PLAT OF GOLDEN BELT ESTATES FIRST ADDITION HAYS, KANSAS



APPROVALS:

This Plat, Golden Belt Estates First Addition, has been submitted to and approved by the Hays Planning Commission this 15 day of SEPTEMBER, 2003.

Larry Auld
Chairman
Dave Baldwin
Secretary

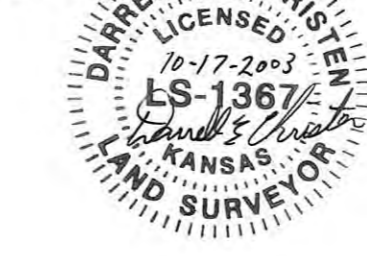
The dedications shown on this Plat accepted by the City Commission of the City of Hays, Kansas, this 25 day of Sept, 2003.

Tom Whelan
Mayor
Camille Berger
City Clerk
John J. Bird, Attorney for the City of Hays



REVIEW SURVEYOR'S CERTIFICATE:

State of Kansas, County of Ellis, ss:
I hereby certify that the review of this plat was found to be in compliance with the requirements of K.S.A. 58-2005. Approved this 12 day of October, 2003.



OWNER'S CERTIFICATE:

Know all men by these presents, that we, the undersigned property owners of the land above described have caused the same to be surveyed and platted into Lots, Blocks, Streets, Drives, Circles and Easements, the same to be known as "Golden Belt Estates First Addition" in Hays, Kansas. The Streets, Drives and Circles are hereby dedicated to and for the use of the public, and the easements as indicated on the accompanying plat are hereby granted to the public for the purpose of constructing, operating, maintaining, and repairing all public utilities.

Western Plains Service Corporation
By *James Desbien*
James Desbien, President

NOTARY CERTIFICATE:

State of Kansas, County of Ellis, ss:
Be it remembered that on this 5th day of September, 2003, before me, a Notary Public in and for said County and State, came James Desbien, President of Western Plains Service Corporation, to me personally known to be the same person who executed the foregoing instrument of writing and duly acknowledged the execution of same. In testimony whereof, I have hereunto set my hand and affixed my notarial seal, the day and year above written.

My Commission Expires 5-27-07 *Anne Dolan*
Notary Public



LEGAL DESCRIPTION

That part of the Southeast Quarter of Section 20, Township 13 South, Range 18 West of the 6th Principal Meridian, Ellis County, Kansas, described as follows:

Commencing at the southeast corner of said Section 20; thence on an assumed bearing of West, along the south line of said Section 20, a distance of 1,327.46 feet to the southeast corner of the 41st Street Plaza First Addition to the City of Hays, Kansas; thence North 01 degrees 07 minutes 28 seconds East along the east line of said Addition, a distance of 50.01 feet to a point on the north right-of-way line of 41st Street, and the point of beginning of the land to be described; thence continuing on the last described course a distance of 825.62 feet; thence South 88 degrees 52 minutes 32 seconds East a distance of 430.00 feet; thence South 01 degrees 07 minutes 28 seconds West a distance of 206.77 feet; thence North 89 degrees 58 minutes 38 seconds East a distance of 234.08 feet; thence South 01 degrees 09 minutes 42 seconds West a distance of 610.51 feet to a point on the north right-of-way line of 41st Street; thence on a bearing of West along the north right-of-way line of 41st Street a distance of 663.76 feet to the point of beginning. Said tract contains 11.385 acres.

STREETS & EASEMENTS:

Streets, drives, and circles as shown on this plat and not heretofore dedicated to and for public use are hereby dedicated. Easements are hereby dedicated for public use, as utility easement right-of-way, which are shown as lying between the dashed lines in widths indicated and as set forth on this plat, and said easements may be employed for the purpose of installing, repairing and maintaining gas lines, electric lines, telephone lines and all other forms and types of public utilities now or hereafter used, by the public, over, under, and along the strips marked "Utility Esm't."

RECORDED:

State of Kansas, County of Ellis, ss:
This is to certify that this instrument was filed for record in the Register of Deeds Office on the 30 day of October, 2003 in Book Calc, Page 399.
Dorcas Herrog Register of Deeds
May Ann King Deputy



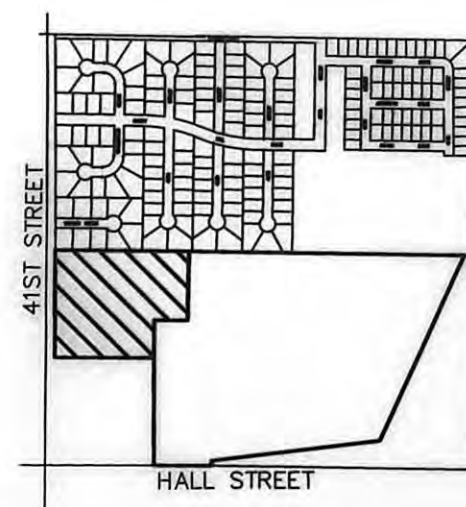
SURVEYORS CERTIFICATE:

I, Harvey Ruder, a Registered Land Surveyor in the State of Kansas, do hereby certify this Plat to be true and correct to the best of my knowledge.

Harvey Ruder, LS-918
July 16, 2003



C CURVE DATA				
CURVE	Δ	R	T	Lc
Ⓐ	4°19'35"	500.00'	18.89'	37.75'
Ⓑ	60°00'00"	40.00'	23.09'	41.89'



- LEGEND**
- △ Found Section Corner
 - Set 1/2" Iron Bar Stamped BWR HAYS, KS
 - Found Iron Bar in Monument Box

PROJECT NAME: WESTERN PLAINS SERVICE CORP.
 PROJECT NO: 2003-229
 DRAWING NO: 2003-229
 LAST EDIT DATE: 7-15-2003
 DWG NAME: N:\2003-229\KIC\KIC01.dwg
 PROJECT NO: 2003-229