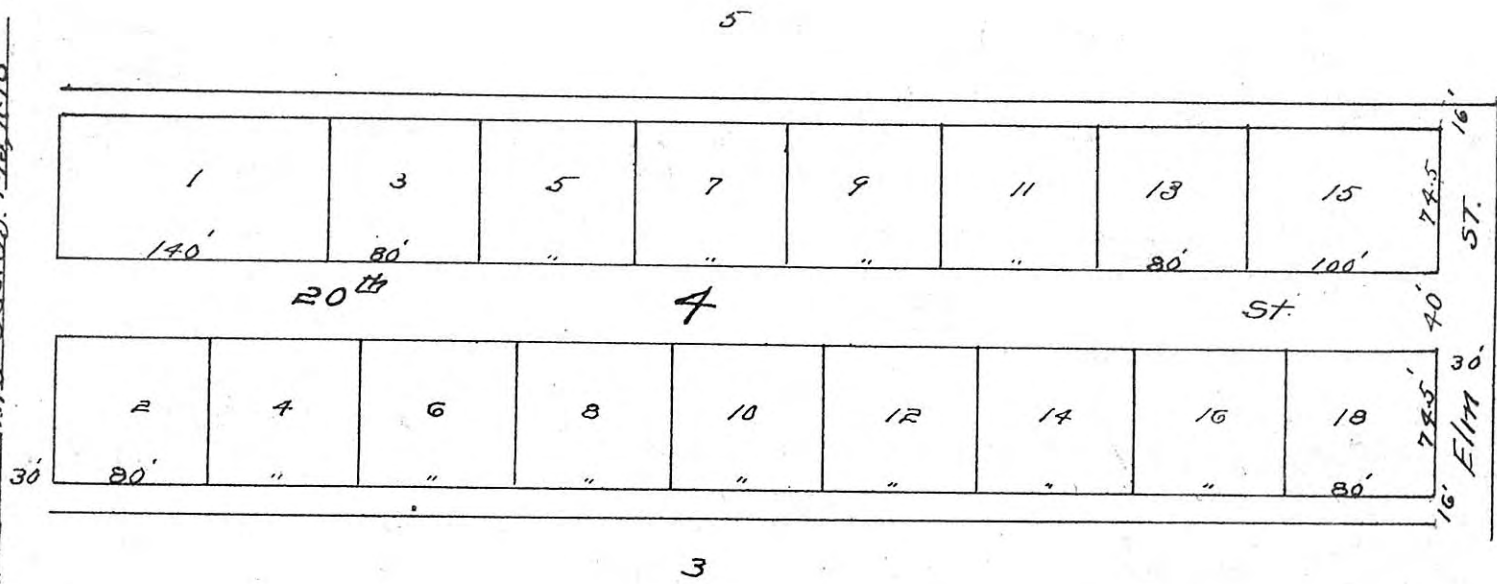


West Sec. Line Sec. 23. T.13. R.18



HAYS DEVELOPEMENT INC. SUB-DIVISION  
 OF  
 ALL OF BLOCK 4 AND PART OF BLOCK 5 IN  
 LEOBOLD ALLEN & CO'S ADDITION TO HAYS  
 AND PART OF BLOCK 3 HIGHLAND ADDITION  
 TO HAYS CITY

Scale 100' = 1 Inch

STATE OF KANSAS }  
 ELLIS COUNTY } SS  
 This instrument was filed for record  
 OCT 2 1948  
 9:30 o'clock A.M. recorded in  
 of Page  
 J. E. Haas  
 Fess 2.00 Register of Deeds