

PLAT OF HAYS PLAZA FIFTH ADDITION HAYS, KANSAS

THIS IS A DIRECT PHOTOGRAPHIC REPRODUCTION OF THE OFFICIAL INSTRUMENT (RECORDED PLAT).

THIS REPRODUCTION WAS MADE BY BUCHER & WILLIS, CONSULTING ENGINEERS, PLANNERS & ARCHITECTS IN AUGUST, 1979.

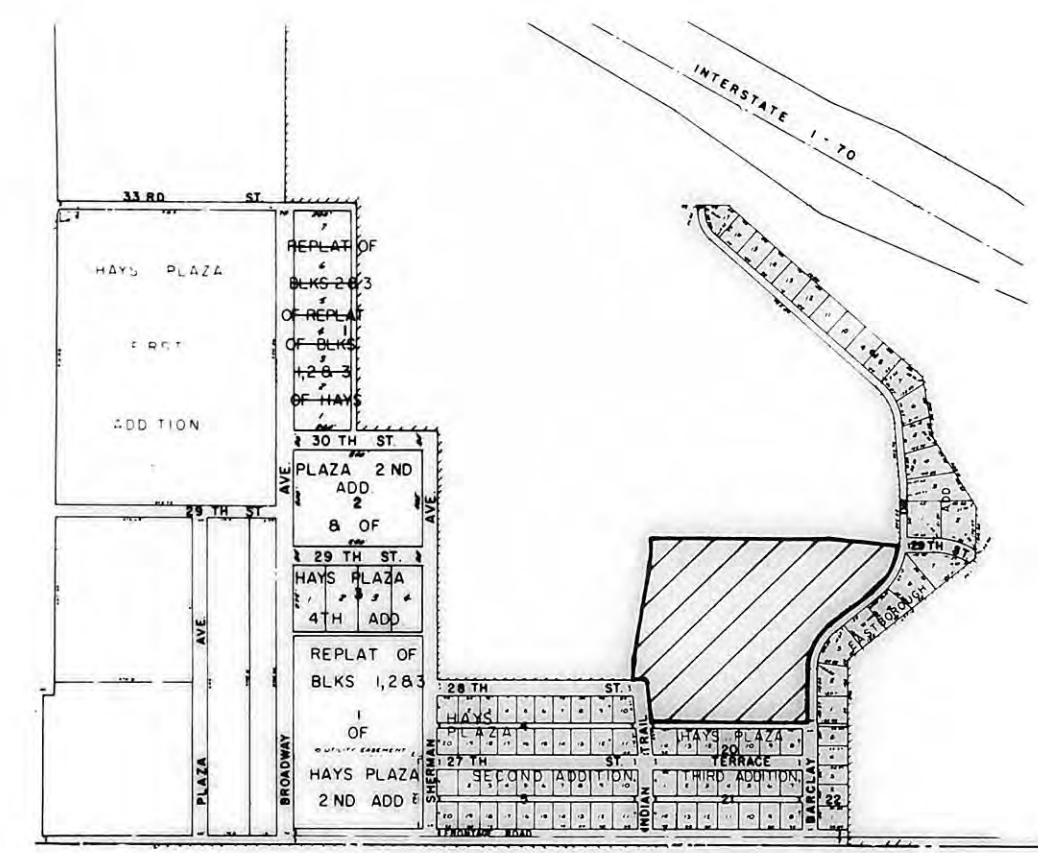
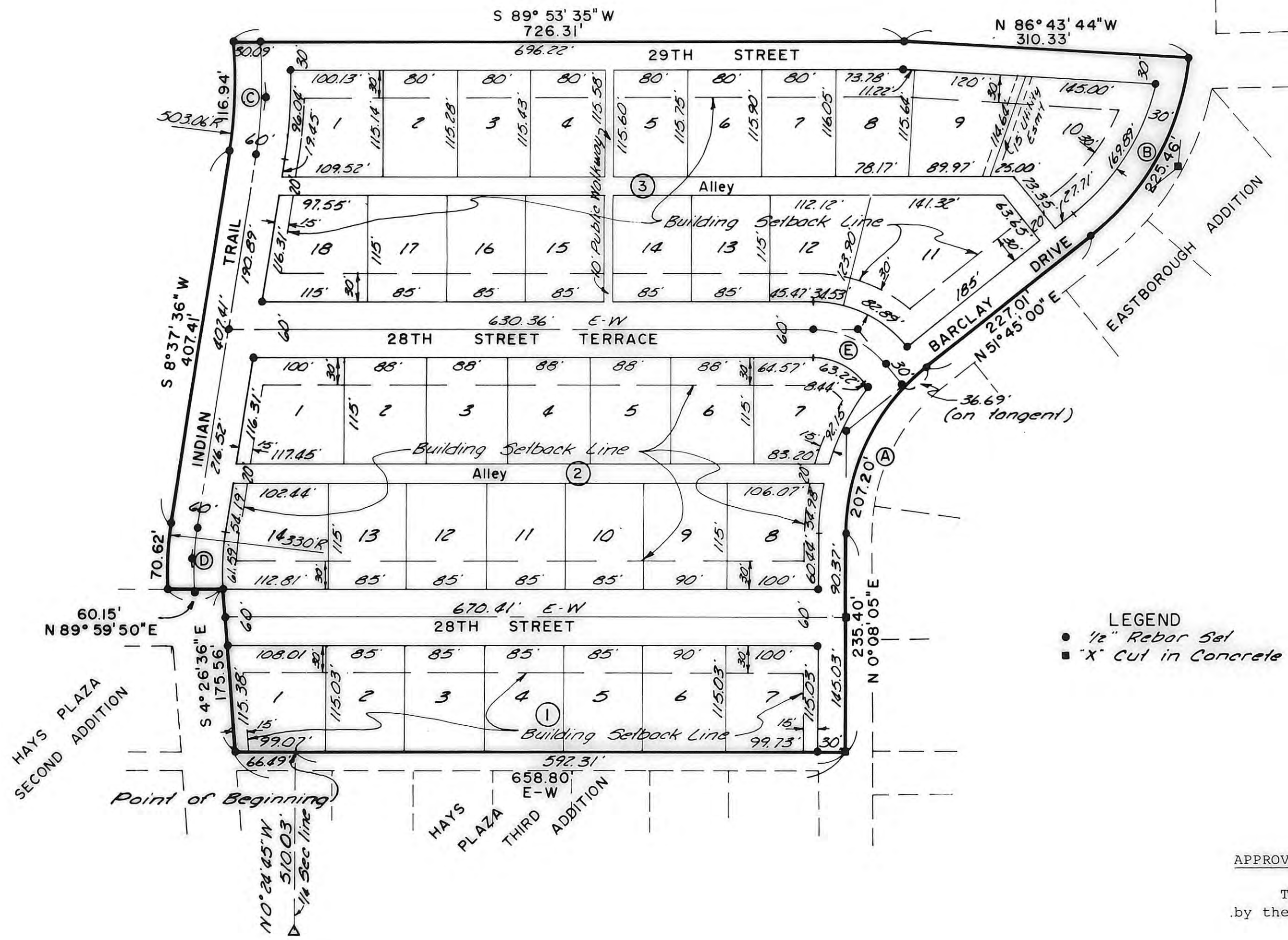
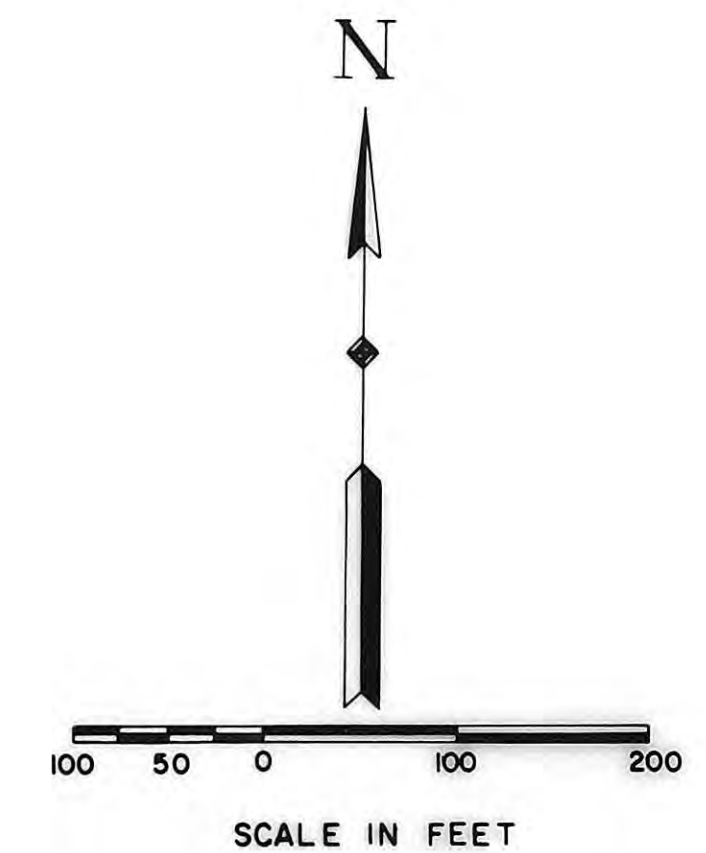
LEGAL DESCRIPTION:
A tract of land in the South Half of the South Half (S½S½) of Section 27, Township 13 South, Range 18 West of the Sixth Principal Meridian, Ellis County, Kansas, and more particularly described as follows:

Commencing at the Southwest corner of the Southeast Quarter (SE¼) of Section 27, Township 13 South, Range 18 West; thence Northerly along the West line of said Southeast Quarter Section, a distance of 510.03 feet, to the point of beginning; thence on an assumed bearing of N 90°00'00" E parallel with the South line of said Southeast Quarter Section, a distance of 592.31 feet; thence N 0°08'05" E, a distance of 235.40 feet; thence on a curve to the right having a radius of 230.00 feet, an arc distance of 207.20 feet; thence tangent to said curve N 51°45'00" E, a distance of 227.01 feet; thence on a curve to the left having a radius of 280.00 feet, an arc distance of 225.46 feet; thence N 86°43'44" W, a distance of 310.33 feet; thence S 89°53'35" W, a distance of 726.31 feet; thence on a curve to the right having a radius of 503.06 feet, the initial tangent of which has a bearing of S 4°41'30" E, an arc distance of 116.94 feet; thence tangent to said curve S 8°37'36" W, a distance of 407.41 feet; thence on a curve to the left having a radius of 330.00 feet, an arc distance of 70.62 feet; thence N 89°59'50" E, a distance of 60.15 feet; thence S 4°26'36" E, a distance of 175.56 feet; thence S 90°00'00" E, a distance of 66.49 feet to the point of beginning. Said tract contains 14.371 acres, more or less.

STREETS, ALLEYS AND EASEMENTS:
Streets, Alleys and Avenues as shown on this plat and not heretofore dedicated to and for public use are hereby so dedicated.

Easements are hereby dedicated for public use, as utility easement right-of-way which are shown as lying between the dashed lines in widths indicated and as set forth on this plat. Said easements may be employed for the purpose of installing, repairing and maintaining gas lines, electric lines, telephone lines, sewer lines, water lines and all other forms and types of public utilities, new or hereafter used, by the public, over, under and along the strips marked "Utility Esm'ts".

OWNERS CERTIFICATE:
Know all men by these presents, that we, the undersigned property owners of the land above described, have caused the same to be surveyed and platted into lots, blocks, streets, alleys and easements, the same to be known as the Hays Plaza Fifth Addition to the City of Hays, in Ellis County, Kansas. The Streets, Avenues and Alleys are hereby dedicated to and for the use of the public, and easements as indicated on the accompanying plat are hereby granted to the public for the purpose of constructing, operating, maintaining and repairing all public utilities.



HAYS PLAZA, INC.
William F. Aubel
William F. Aubel, President
Van L. Hartman
Van L. Hartman, Secretary

NOTARY CERTIFICATE:
State of Kansas, County of Ellis, ss

Be it remembered that on this 11 day of August, 1976, before me, a notary public in and for said County and State, came William F. Aubel, President of Hays Plaza, Inc. and Van L. Hartman, Secretary of Hays Plaza, Inc., to me personally known to be the same persons who executed the foregoing instrument of writing and duly acknowledged the execution of same. In testimony whereof, I have hereunto set my hand and affixed my notarial seal the day and year above written.

Julie Kramer
Notary Public

My Commission Expires:
March 5, 1980

SURVEYOR'S CERTIFICATE:
I, a licensed professional engineer in the State of Kansas, do hereby certify this plat to be true and correct to the best of my knowledge; and that all iron bars as shown have been accurately set. Said survey was completed on August 10, 1976.

James Ray Fleming
James Ray Fleming, P.E.
Hays, Kansas

APPROVALS:
This plat of HAYS PLAZA FIFTH ADDITION has been submitted to and approved by the Hays-Ellis County Planning Commission this 16 day of August, 1976.

Stewart D. Powell
Chairman
Margaret E. Smith
Secretary

The dedication shown on this plat is accepted by the City Commission of the City of Hays, Kansas, this 24th day of August, 1976.

Attest:
Ann Marie Schubert
City Clerk

Stephen E. Furdyk
Mayor

CURVE DATA				
CURVE	Δ	R	T	Lc
A	51°36'55"	230'	111.22'	207.20'
B	42°08'11"	280'	119.25'	225.46'
C	13°19'06"	533.06'	61.02'	121.50'
D	13°04'12"	300'	34.37'	68.43'
E	51°45'00"	100'	48.50'	90.32'

RECORDED:
State of Kansas, County of Ellis, ss

This is to certify that this instrument was filed for record in the Register of Deeds Office on the 9 day of Sept, 1976, in Book 29, Page 31.

Ordinance 278 page 709
Plat & Deed 278 page 711
Resolution 278 page 714

Virginia Skog
Register of Deeds
\$20.00
Deputy

PREPARED BY
BUCHER & WILLIS
CONSULTING ENGINEERS, PLANNERS & ARCHITECTS
SALINA, KANSAS KANSAS CITY, MO.