

THIS IS A DIRECT PHOTOGRAPHIC REPRODUCTION OF THE OFFICIAL INSTRUMENT (RECORDED PLAT).  
 THIS REPRODUCTION WAS MADE BY BUCHER & WILLIS CONSULTING ENGINEERS, PLANNERS & ARCHITECTS IN AUGUST, 1979.

# PLAT OF HAYS PLAZA SIXTH ADDITION AND REPLAT OF BLOCK 4, HAYS PLAZA SECOND ADDITION HAYS, KANSAS

**LEGAL DESCRIPTION**

A tract of land in the East Half of the Southwest Quarter (E½ SW¼) of Section 27, Township 13 South, Range 18 West of the Sixth Principal Meridian, Ellis County, Kansas, and more particularly described as follows:

Commencing at the Southwest corner of Section 27, Township 13 South, Range 18 West; THENCE on an assumed bearing of N 90°00'00" E along the South line of said Section 27, a distance of 1,703.20 feet; THENCE N 0°08'00" E, a distance of 375.00 feet to the point of beginning; THENCE N 90°00'00" E, a distance of 829.82 feet; THENCE N 4°26'26" W, a distance of 306.33 feet; THENCE on a curve to the right having a radius of 330.00 feet, an arc distance of 75.28 feet; THENCE tangent to said curve N 8°37'46" E, a distance of 407.41 feet; THENCE on a curve to the left having a radius of 503.06 feet, an arc distance of 116.94 feet, the terminal tangent of which has a bearing of N 4°41'20" W; THENCE N 89°53'45" E, a distance of 30.09 feet; THENCE on a curve to the left having a radius of 533.06 feet, the initial tangent of which has a bearing of N 13°05'05" W, an arc distance of 80.52 feet; THENCE tangent to said curve N 27°35'05" W, a distance of 218.10 feet; THENCE S 62°24'55" W, a distance of 456.21 feet; THENCE on a curve to the right having a radius of 470.00 feet, an arc distance of 226.28 feet; THENCE tangent to said curve S 90°00'00" W, a distance of 43.62 feet; THENCE S 0°08'00" W, a distance of 1,323.00 feet to the point of beginning. Said tract contains 27.513 acres, more or less.

**STREETS, ALLEYS AND EASEMENTS:**

Streets, Alleys and Avenues as shown on this plat and not heretofore dedicated to and for public use are hereby so dedicated.

Easements are hereby dedicated for public use, as utility easement right-of-way which are shown as lying between the dashed lines in widths indicated and as set forth on this plat. Said easements may be employed for the purpose of installing, repairing and maintaining gas lines, electric lines, telephone lines, sewer lines, water lines and all other forms and types of public utilities, new or hereafter used, by the public, over, under and along the strips marked "Utility Esm'ts".

**OWNERS CERTIFICATE:**

Know all men by these presents, that we, the undersigned property owners of the land above described, have caused the same to be surveyed and platted into lots, blocks, streets, alleys and easements, the same to be known as the Hays Plaza Sixth Addition and Replat of Block 4, Hays Plaza Second Addition to the City of Hays, in Ellis County, Kansas. The Streets, Avenues and Alleys are hereby dedicated to and for the use of the public, and easements as indicated on the accompanying plat are hereby granted to the public for the purpose of constructing, operating, maintaining and repairing all public utilities.

HAYS PLAZA, INC.

*William F. Aubel*  
 William F. Aubel, President

*Van L. Hartman*  
 Van L. Hartman, Secretary

**NOTARY CERTIFICATE:**

State of Kansas, County of Ellis, ss

Be it remembered that on this 16th day of February, 1977, before me, a notary public in and for said County and State, came William F. Aubel, President of Hays Plaza, Inc. and Van L. Hartman, Secretary of Hays Plaza, Inc., to me personally known to be the same persons who executed the foregoing instrument of writing and duly acknowledged the execution of same. In testimony whereof, I have hereunto set my hand and affixed my notarial seal the day and year above written.

*Lynore Gentry*  
 Notary Public

My Commission Expires:

June 21, 1978

**SURVEYOR'S CERTIFICATE:**

I, James Ray Flemons, a licensed professional engineer in the State of Kansas, do hereby certify this plat to be true and correct to the best of my knowledge; and that all iron bars as shown have been accurately set. Said survey was completed on August 10, 1976.

*James Ray Flemons*  
 James Ray Flemons, P.E.  
 Hays, Kansas

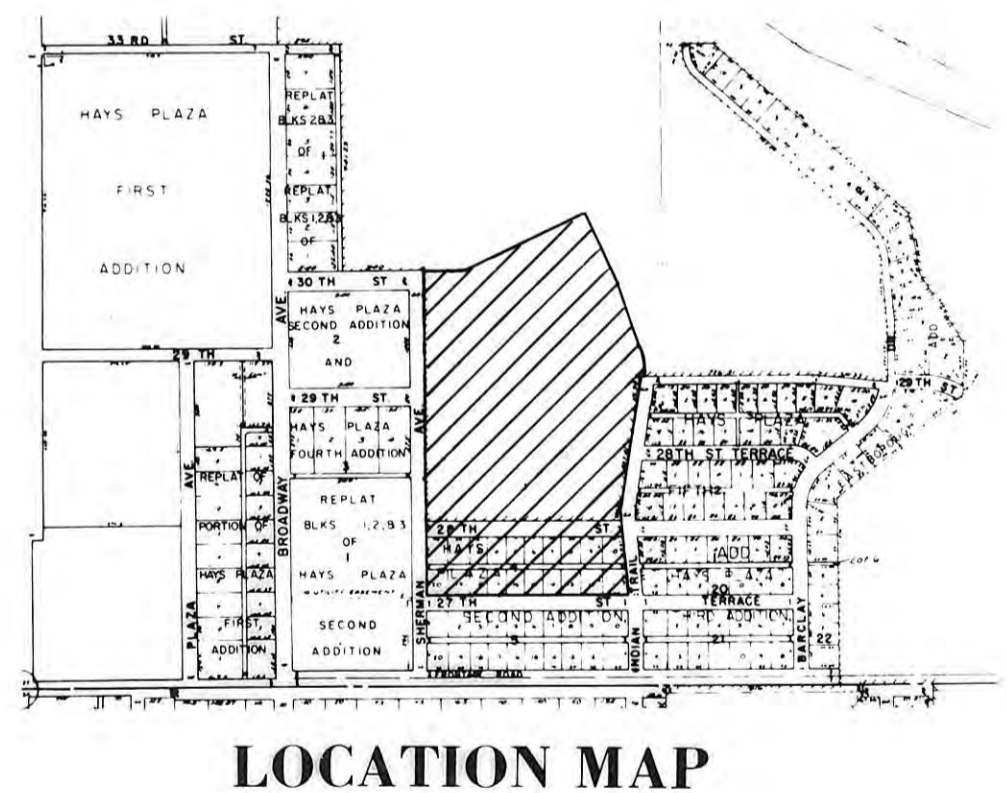
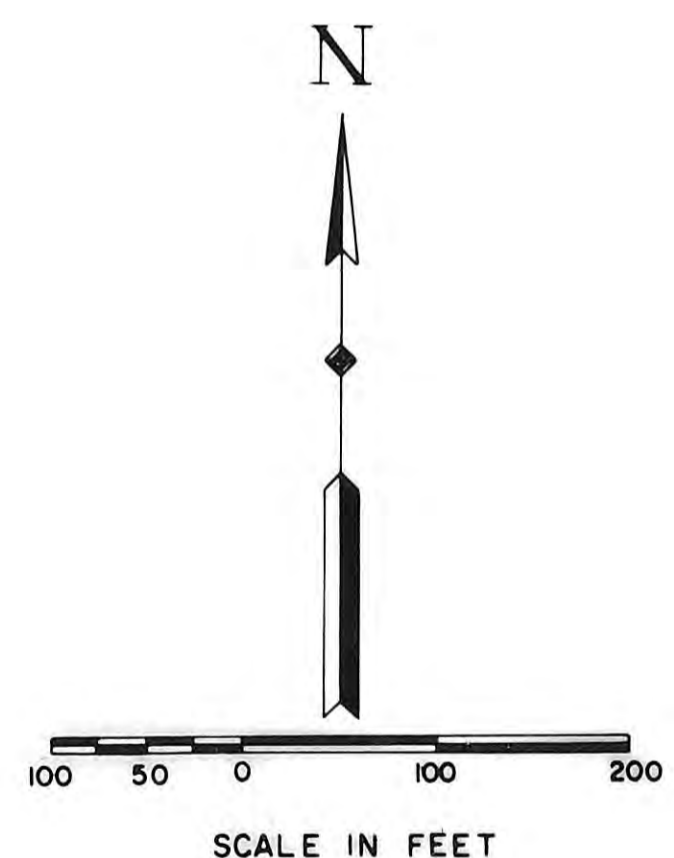
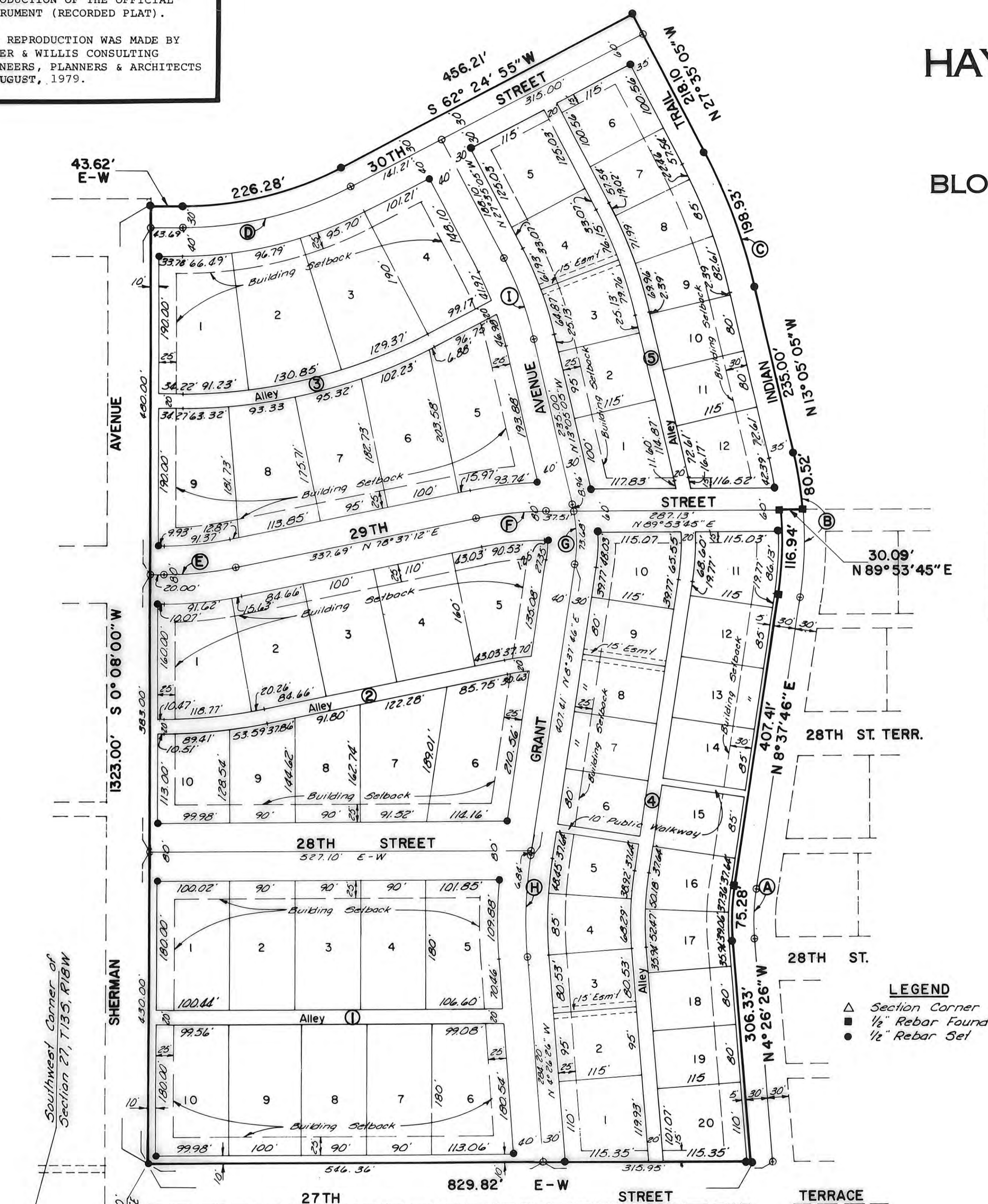
The dedications shown on this plat are accepted by the County Commission of Ellis County, Kansas, this 24th day of April, 1977.

ATTEST: *Emerj J. Rome* ELLIS COUNTY, KANSAS  
 County Clerk *Eugene Schmidt* Chairman



PREPARED BY  
**BUCHER & WILLIS**  
 CONSULTING ENGINEERS, PLANNERS & ARCHITECTS

CURVE DATA (at C of Street)									
CURVE	Δ	R	T	Lc	CURVE	Δ	R	T	Lc
(A)	13° 04' 12"	300.00'	34.37'	68.43'	(F)	11° 16' 33"	500.00'	49.36'	98.40'
(B)	21° 42' 51"	533.06'	102.24'	202.02'	(G)	21° 42' 51"	218.06'	41.82'	82.64'
(C)	14° 30' 00"	786.06'	100.00'	198.93'	(H)	13° 04' 12"	615.00'	70.45'	140.29'
(D)	27° 35' 05"	500.00'	122.74'	240.72'	(I)	14° 30' 00"	471.06'	59.93'	119.21'
(E)	11° 22' 48"	500.00'	49.82'	99.31'					



**APPROVALS:**

This plat of HAYS PLAZA SIXTH ADDITION AND REPLAT OF BLOCK 4, HAYS PLAZA SECOND ADDITION has been submitted to and approved by the Hays-Ellis County Planning Commission this 17th day of July, 1977.

*Robert J. ...* Chairman  
*W. August E. Smith* Secretary

The dedication shown on this plat is accepted by the City Commission of the City of Hays, Kansas, this 17th day of March, 1977.

Attest: *Robert ...* Mayor  
*...* City Clerk

Ordinance - Book 282 page 3  
 Plat & Replat - Book 282 page 5  
 Resolution - Book 282 page 9

RECORDED:  
 State of Kansas, County of Ellis, ss  
 This is to certify that this instrument was filed for record in the Register of Deeds Office on the 19 day of April, 1977, in Book 2A (Plat) Page 49  
*Virginia Strogg* Register of Deeds  
*Rose Ann Rupp* Deputy