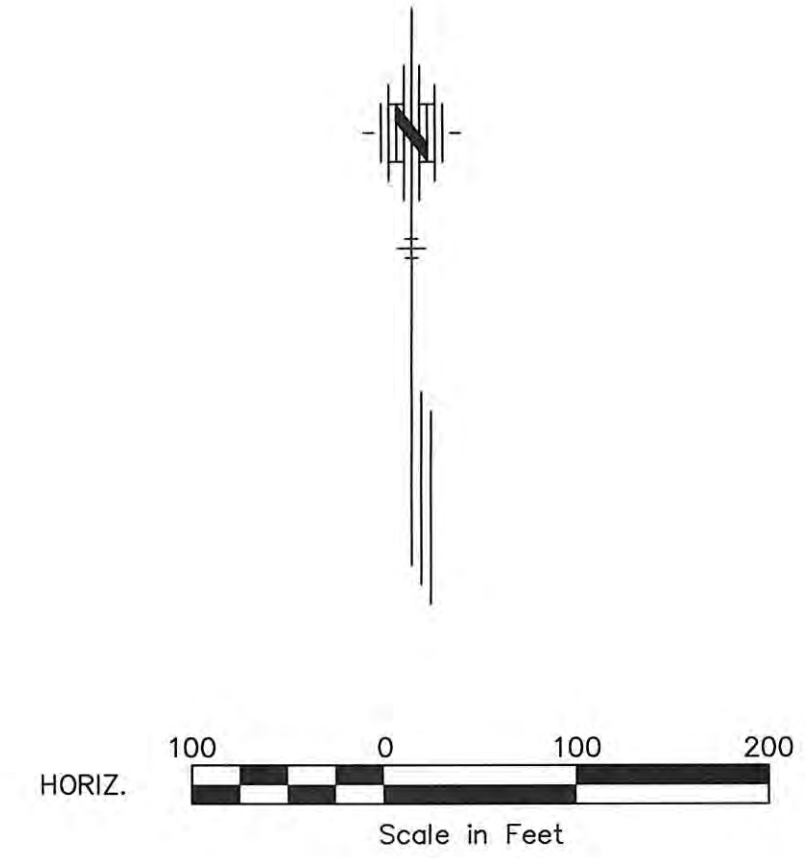
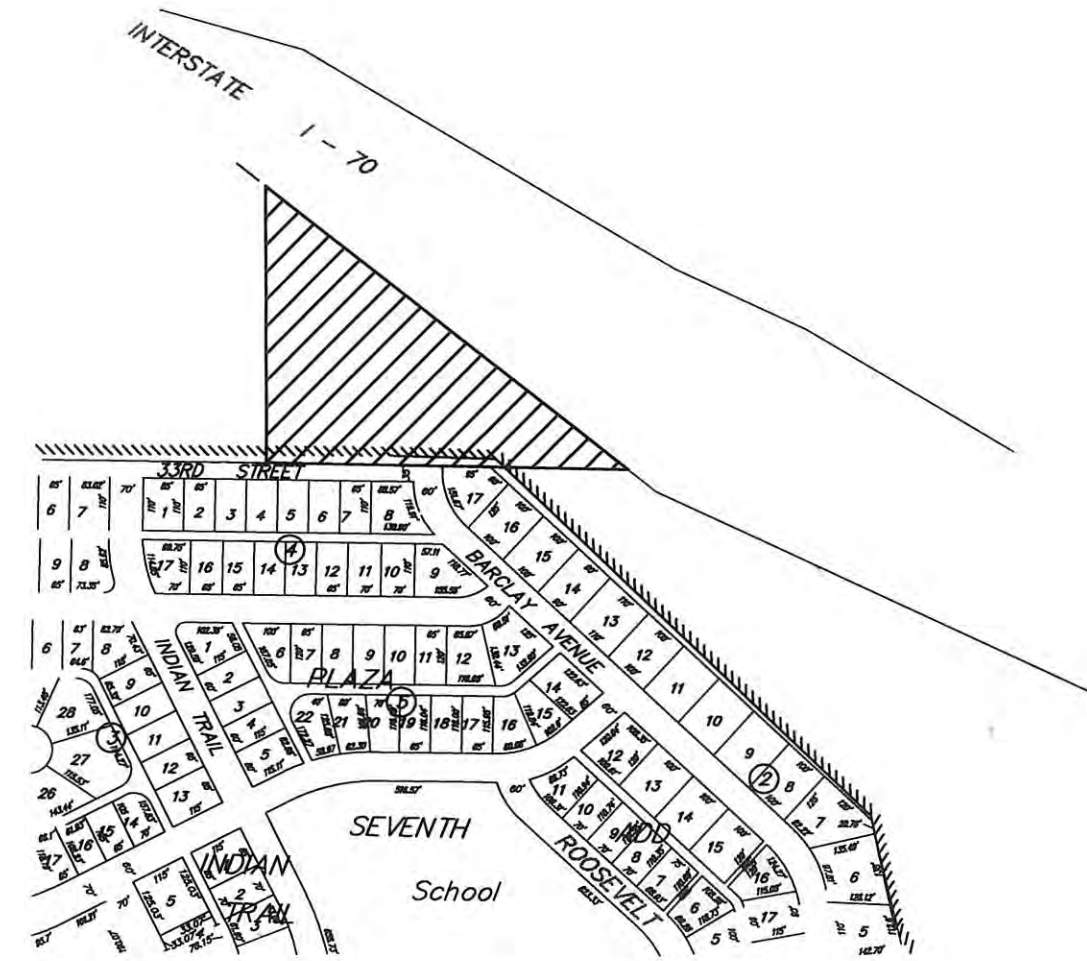


PLAT HAYS SUNDANCE ADDITION HAYS, KANSAS



LEGAL DESCRIPTION:

A tract of land situated in the North Half (N 1/2) of Section 27, Township 13 South, Range 18 West of the Sixth Principal Meridian, Ellis County, Kansas and more particularly described as follows:
Beginning at the Southeast corner of the Northwest Quarter (NW 1/4) of Section 27, Township 13 South, Range 18 West, said point being monumented with a 1/2 inch rebar, THENCE on an assumed bearing of South 89 degrees 15 minutes 22 seconds West along the South line of the Northwest Quarter (NW 1/4) of said Section 27 a distance of 232.50 feet; THENCE on a bearing of North 00 degrees 44 minutes 38 seconds West a distance of 506.61 feet to the South right of way line of Interstate 70; THENCE on a bearing of South 59 degrees 54 minutes 08 seconds East along said South right of way line of Interstate 70 a distance of 276.22 feet; THENCE on a bearing of South 55 degrees 01 minutes 49 seconds East along said South right of way line of Interstate 70 a distance of 625.42 feet to the South line of the Northeast Quarter (NE 1/4) of said Section 27; THENCE on a bearing of South 89 degrees 15 minutes 51 seconds West along the South line of the Northeast Quarter (NE 1/4) of said Section 27 a distance of 512.46 feet to the point of beginning. Said tract contains 4.500 acres.

STREETS & EASEMENTS:



Streets, drives, and circles as shown on this plat and not heretofore dedicated to and for public use are hereby dedicated. Easements are hereby dedicated for public use, as utility easement right-of-way, which are shown as lying between the dashed lines in widths indicated and as set forth on this plat, and said easements may be employed for the purpose of installing, repairing and maintaining gas lines, electric lines, telephone lines, and all other forms and types of public utilities, now or hereafter used, by the public over, under and along the strips marked "Utility Esm't."

OWNER'S CERTIFICATE:

Know all men by these presents, that we, the undersigned property owners of the land above described have caused the same to be surveyed and platted into Lots, Blocks, Streets, Drives, Circles and Easements, the same to be known as "Hays Sundance Addition," in Hays, Kansas. The Streets, Drives and Circles are hereby dedicated to and for the use of the public, and the easements as indicated on the accompanying plat are hereby granted to the public for the purpose of constructing, operating, maintaining, and repairing all public utilities.

APPROVALS:

This plat, Hays Sundance Addition has been submitted to and approved by the Hays Planning Commission this 16th day of DECEMBER, 1996.


 CHAIRMAN

 SECRETARY
 John A. Bird, Attorney for the City of Hays

By 
 Verlin F. Pfannenstiel

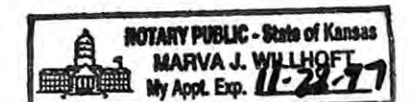
 Elaine Pfannenstiel

NOTARY CERTIFICATE:

State of Kansas, County of Ellis, ss: Be it remembered that on this 16th day of Dec., 1996, before me, a Notary Public in and for said County and State, came Verlin F. Pfannenstiel and Elaine Pfannenstiel to me personally known to be the same persons who executed the foregoing instrument of writing and duly acknowledged the execution of the same. In testimony whereof, I have hereunto set my hand and affixed my notarial seal, the day and year above written.


 Notary Public

My Commission Expires: 11-29-97





SURVEYOR'S CERTIFICATE:

I, Thomas G. Bieker, a Registered Land Surveyor in the State of Kansas, do hereby certify this Plat to be true and correct to the best of my knowledge.


 Thomas G. Bieker
Dec. 16, 1996
 Date



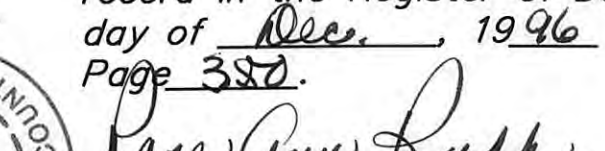
The dedications shown on this plat accepted by the City Commission of the City of Hays, Kansas, this 26 day of Dec., 1996.


 MAYOR
 ATTEST: 
 City Clerk

RECORDED:

State of Kansas, County of Ellis, ss:

This is to certify that this instrument was filed for record in the Register of Deeds Office on the 30 day of Dec., 1996 in Book Cal, Page 337.


 REGISTER OF DEEDS
 DEPUTY



Plat + Reel 419-471
 Reel 419-475

LOCATION MAP
NO SCALE

LEGEND

- 1/2" Bar & Cap Set Stamped "BWR HAYS, KS"
- △ Center Section 27, T13S, R18W (1/2" Bar Found)

