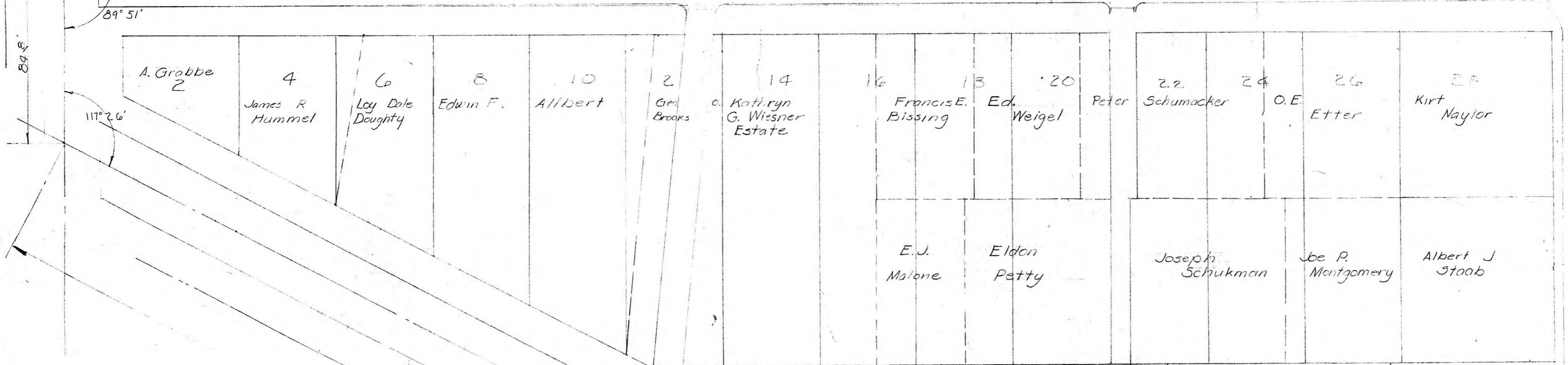


790E'

19TH STREET

90°0'



APPROX ALLEY LOCATION
Kathryn G. Wiesner Estate
Albert J. Staab

Block
ONE
LEBOUR ALLEN CO.
Ethel Moore
Paul E. Fairbanks
Add.

ELM STREET
491.8'

889.4'

E 17TH STREET

100'

75'

110'

62°43'

SURVEY OF HIGHLAND ADDITION
HAYS, KANSAS

AUGUST 9, 1954

HAROLD A. ROYCE
ARCHITECTURAL & ENGINEERING
SERVICE

HAYS KANSAS

