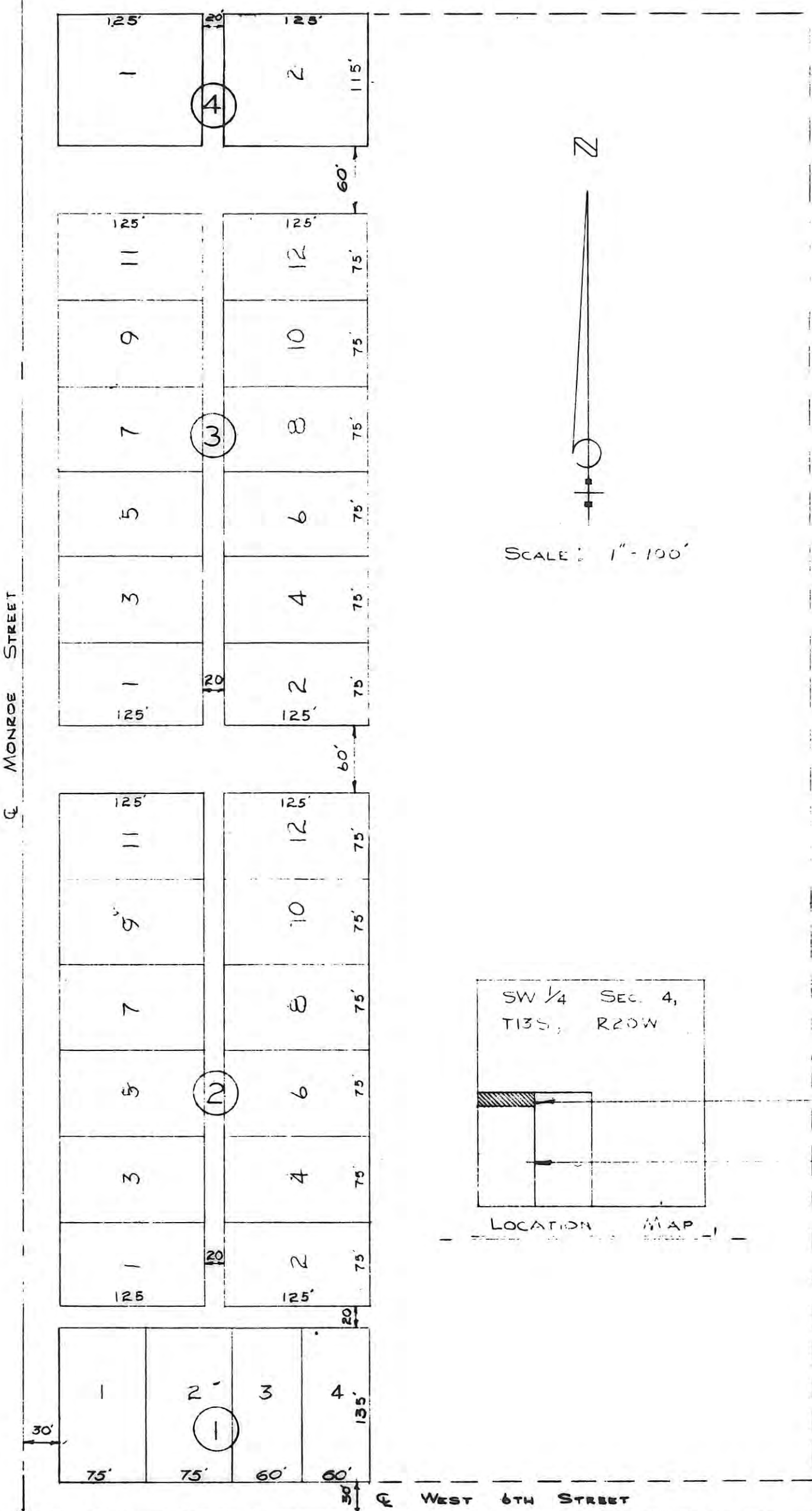


THIS IS A DIRECT PHOTOGRAPHIC REPRODUCTION OF THE OFFICIAL INSTRUMENT (RECORDED PLAT).

THIS REPRODUCTION WAS MADE BY BUCHER & WILLIS, CONSULTING ENGINEERS, PLANNERS & ARCHITECTS IN JUNE 1979

MEADOWBROOK ACRES REPLAT
ELLIS COUNTY, KANSAS



LEGAL DESCRIPTION

A tract of land in the Southwest corner of Section 4, Township 13 South, Range 20 West of the 6th Principal Meridian, Ellis County, Kansas and further described as follows:

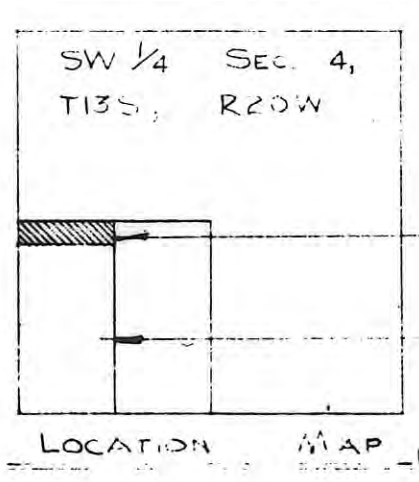
Beginning on the Southwest corner of Section 4; thence East along the South line of Section 4, a distance of 300 feet; thence North and parallel to the West line of Section 4, a distance of 1,320 feet; thence West and parallel to the South line of Section 4, a distance of 300 feet; thence South along the West line of Section 4, a distance of 1,320 feet to the point of beginning.

Said tract being a replat of Blocks one, two and three of Meadowbrook Acres Addition and an initial plat of Lots one and two of Block 4 of said Addition.

I the Undersigned, John W. Smith, a licensed Professional Engineer do hereby certify this plat to be true and correct to the best of my knowledge.

Signed this 30 day of June, 1960.

John W. Smith
JOHN W. SMITH, P. E.



STATE OF KANSAS }
ELLIS COUNTY }
This instrument was filed for record
JUL 8 1960

4:00 o'clock P.M. recorded in
Book 2 of Plats page 70
Fees \$3.00
#6.00
Register of Deeds

SW CORNER OF SEC. 4,
T13S, R20W.

JOHN W. SMITH
CONSULTING ENGINEER & ASSOCIATES
HAYS, KANSAS
June 1960