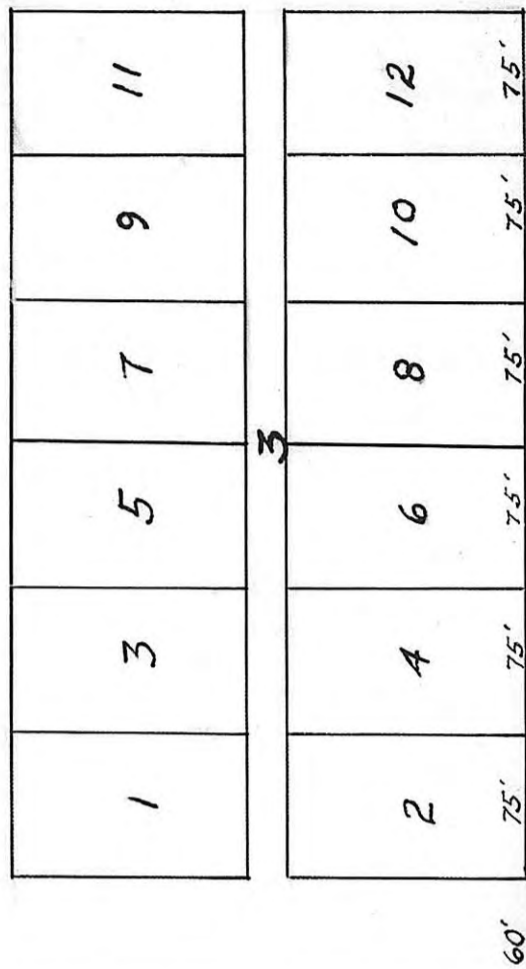


City Limits 1960

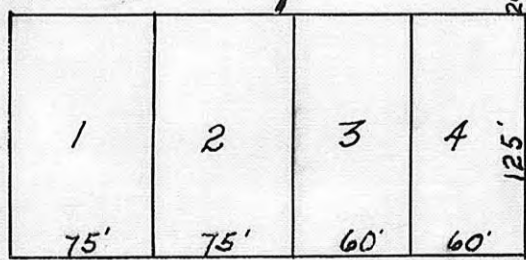
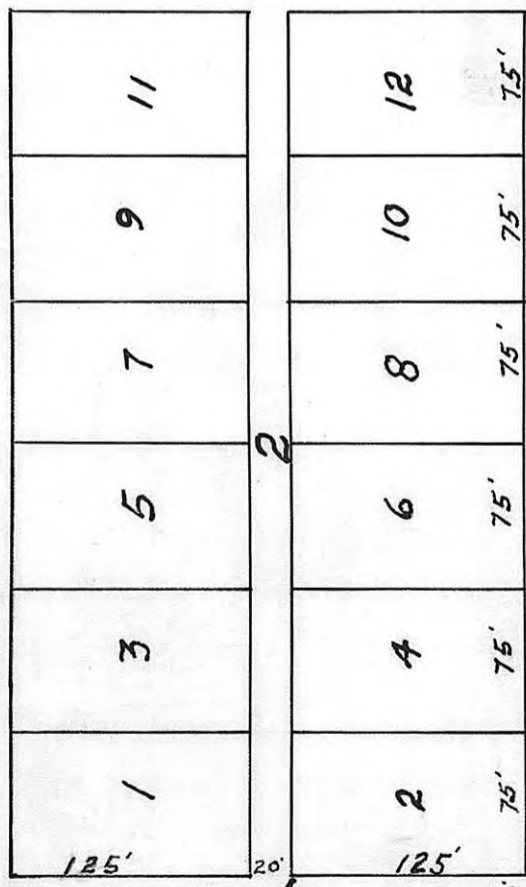
W 1/2 W 1/2 S 1/2 SW 1/4 Sec. 4 T13 R20



*Void*  
*See replat on page 70*



Monroe Street



City Limits 1960

30' 6th St 30'

STATE OF KANSAS  
ELLIS COUNTY  
This instrument was filed for record

MAY 2 1960

4:15 o'clock  
Book 2 of Plats page 1  
Fees 3.80  
2.80 Trans.  
5.80  
Registered of Deeds

Copy of

Meadowbrook Acres  
Block 1, 2, 3  
Ellis County, Kans.  
Scale 1" = 100'

