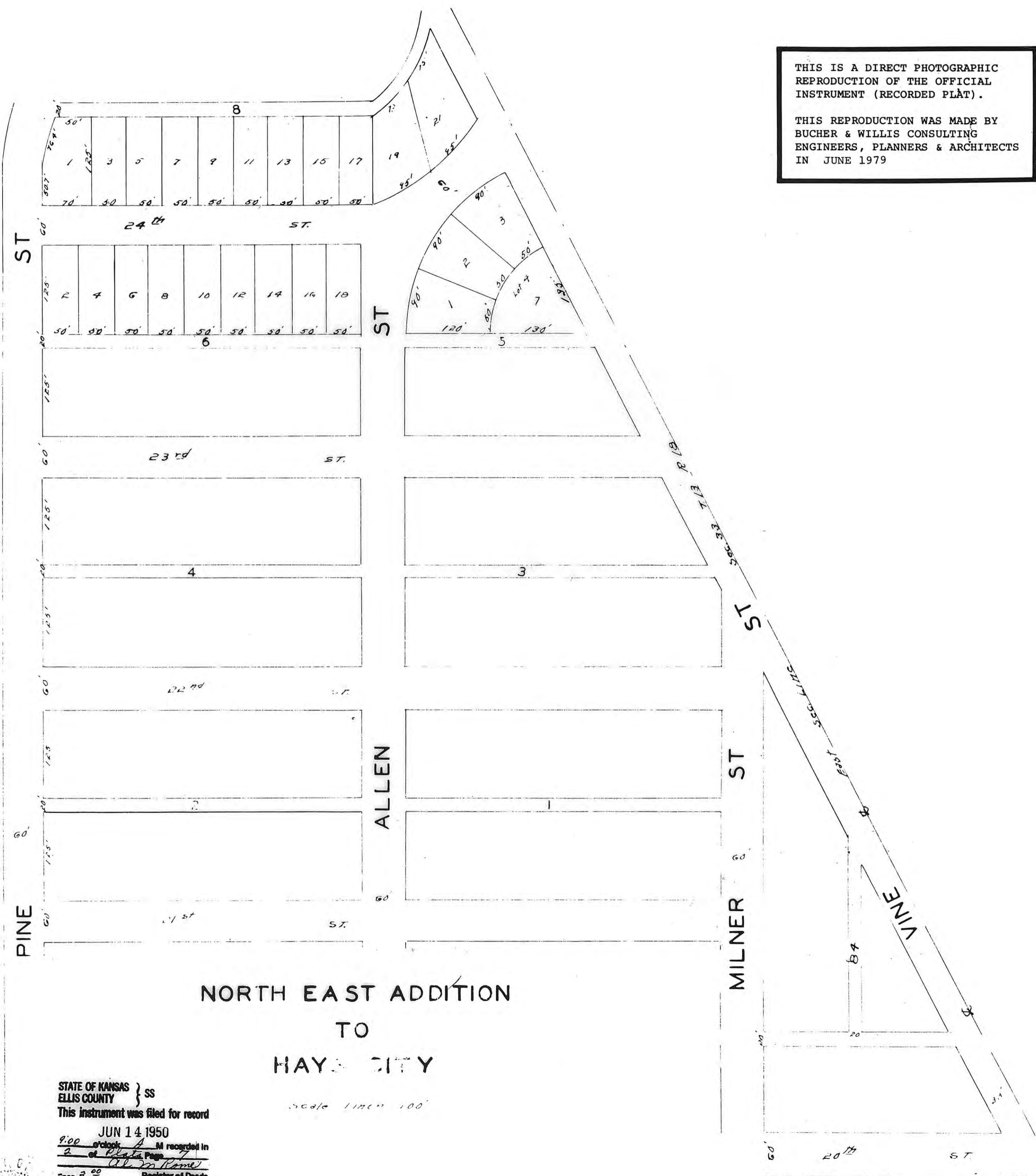


THIS IS A DIRECT PHOTOGRAPHIC REPRODUCTION OF THE OFFICIAL INSTRUMENT (RECORDED PLAT).

THIS REPRODUCTION WAS MADE BY BUCHER & WILLIS CONSULTING ENGINEERS, PLANNERS & ARCHITECTS IN JUNE 1979



NORTH EAST ADDITION  
TO  
HAYS CITY

STATE OF KANSAS } SS  
ELLIS COUNTY }  
This instrument was filed for record  
JUN 14 1950  
9:00 o'clock A.M. recorded in  
2 of Plate Page 7  
at Wame  
Fee 3.00 Register of Deeds

Scale 1 inch = 100'

For Dedi. See 22 Misc Page 488

