

# SKYLINE SECOND ADDITION

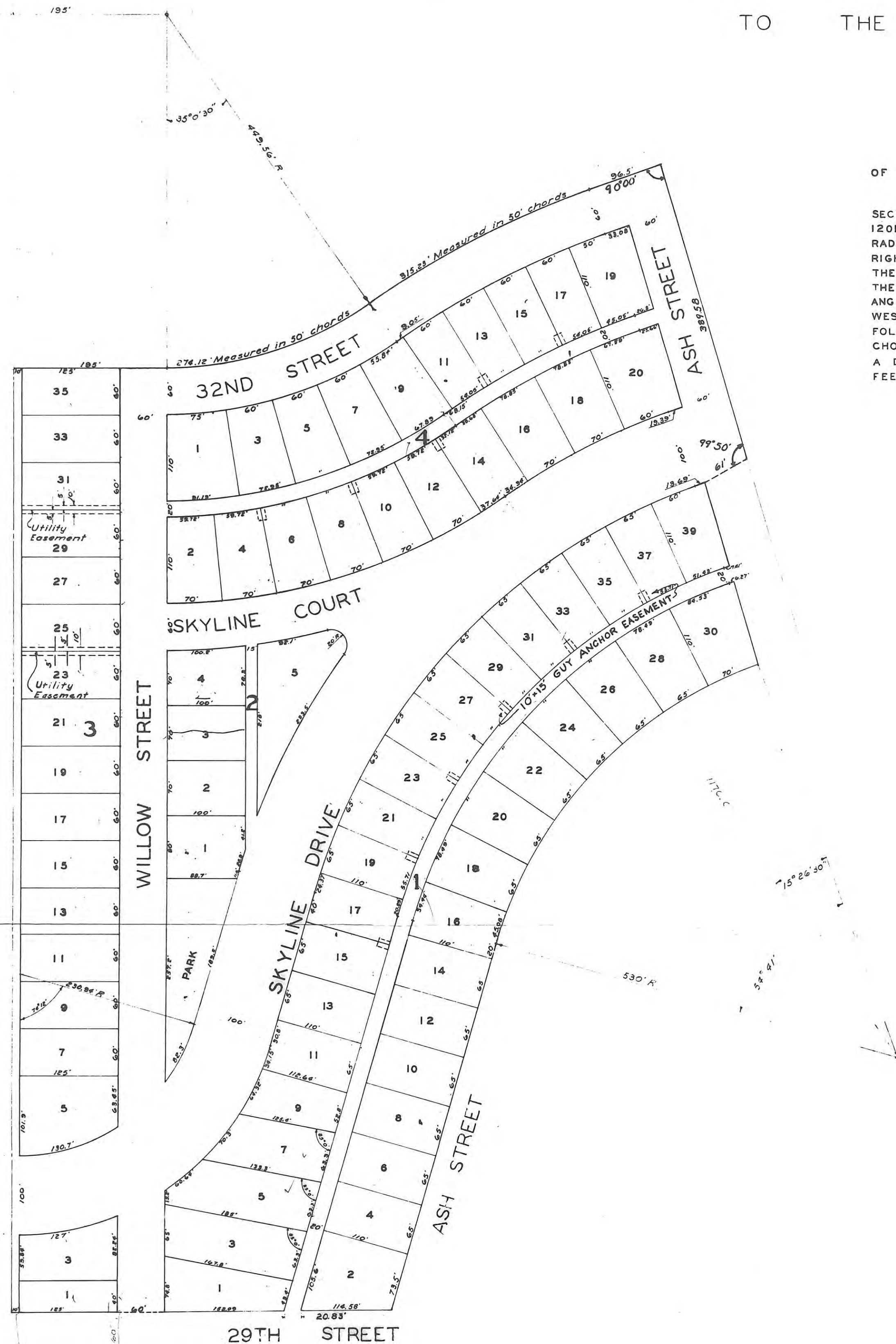
TO THE CITY OF HAYS, KANSAS

THIS IS A DIRECT PHOTOGRAPHIC REPRODUCTION OF THE OFFICIAL INSTRUMENT (RECORDED PLAT).  
 THIS REPRODUCTION WAS MADE BY BUCHER & WILLIS CONSULTING ENGINEERS, PLANNERS & ARCHITECTS IN JUNE 1979

## LEGAL DESCRIPTION

A TRACT OF LAND IN THE WEST 1/2 OF THE SOUTHEAST 1/4 OF SECTION 28, TOWNSHIP 13 SOUTH, RANGE 18 WEST OF THE 6TH PRINCIPAL MERIDIAN, ELLIS COUNTY, KANSAS AND FURTHER DESCRIBED AS FOLLOWS:

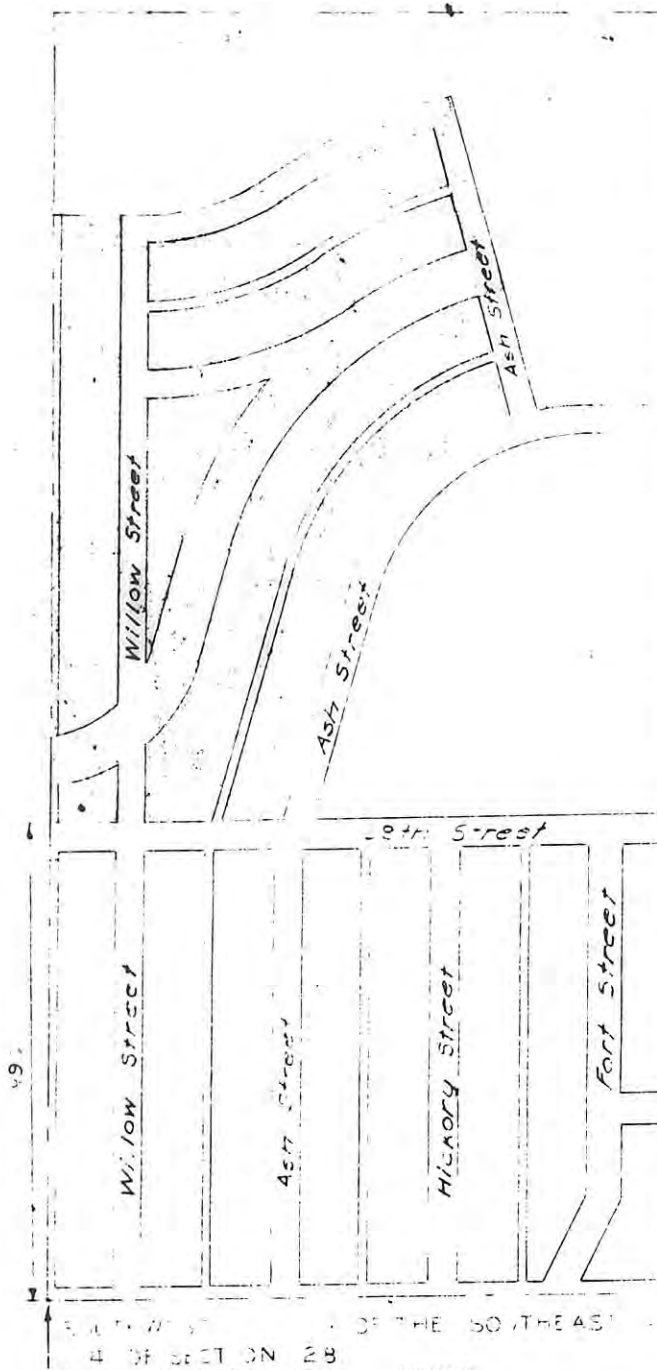
BEGINNING AT A POINT WHICH IS 990 FEET NORTH OF THE SOUTHWEST CORNER OF THE SOUTHEAST 1/4 OF SAID SECTION 28; THENCE NORTH ALONG THE WEST LINE OF THE SOUTHEAST 1/4 OF SECTION 28, A DISTANCE OF 1201.74 FEET; THENCE EAST AT A RIGHT ANGLE, A DISTANCE OF 195 FEET; THENCE LEFT ON A CURVE OF 449.56 FOOT RADIUS, A DISTANCE OF 274.12 FEET, MEASURED ON 50 FOOT CHORDS, (EXCEPT THE LAST CHORD DISTANCE); THENCE RIGHT ON A CURVE OF 1170 FOOT RADIUS, A DISTANCE OF 315.23 FEET, MEASURED ON 50 FOOT CHORDS, (EXCEPT THE LAST CHORD DISTANCE); THENCE CONTINUE ON THE TANGENT LINE OF SAID CURVE, A DISTANCE OF 96.5 FEET; THENCE SOUTHEASTERLY AT A 90°00' ANGLE, A DISTANCE OF 389.58 FEET; THENCE SOUTHWESTERLY AT A 99°50' ANGLE, A DISTANCE OF 61 FEET; THENCE SOUTH BY EAST AT A 99°50' ANGLE, A DISTANCE OF 240 FEET; THENCE WEST AND LEFT ALONG A CURVE OF 530 FOOT RADIUS, A DISTANCE OF 505.08 FEET, MEASURED ON THE FOLLOWING CHORD DISTANCES, (FIRST CHORD - 70 FEET; SECOND, THIRD, FOURTH, FIFTH, SIXTH AND SEVENTH CHORDS - 65 FEET; EIGHTH CHORD - 45.08 FEET); THENCE SOUTH BY WEST ON A TANGENT OF SAID CURVE, A DISTANCE OF 483.5 FEET; THENCE WEST ALONG THE NORTH LINE OF 29TH STREET, A DISTANCE OF 482.50 FEET TO THE PLACE OF BEGINNING.



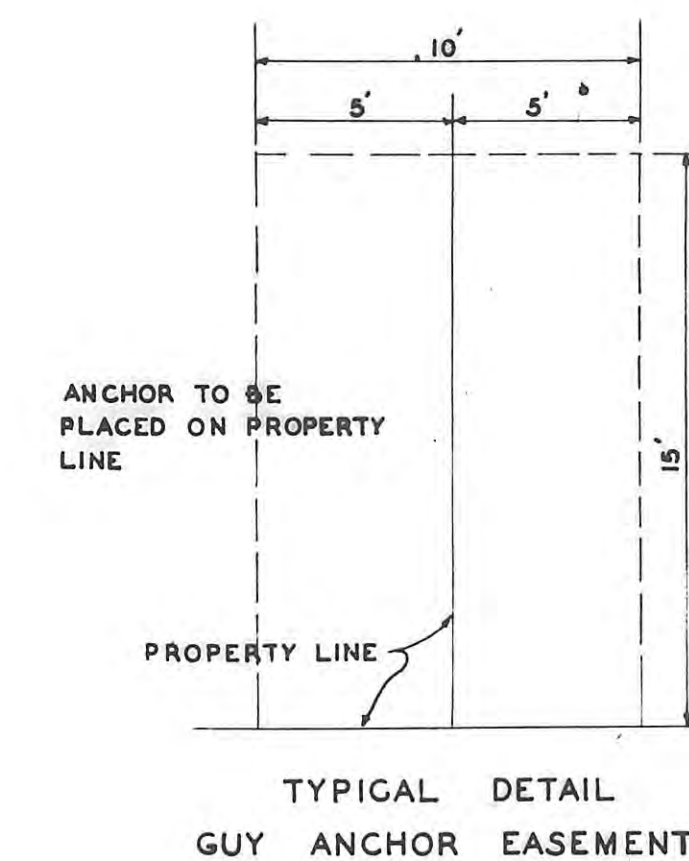
30TH STREET



SCALE: 1" = 100'



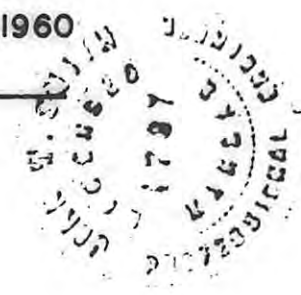
LOCATION MAP



## ENGINEER'S CERTIFICATE

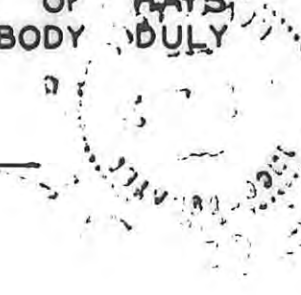
I, THE UNDERSIGNED, JOHN W. SMITH, A LICENSED PROFESSIONAL ENGINEER, DO HEREBY CERTIFY THIS PLAT TO BE TRUE AND CORRECT TO THE BEST OF MY KNOWLEDGE.

SIGNED THIS 27 DAY OF April, 1960  
 JOHN W. SMITH, P.E.



I HEREBY CERTIFY THAT THIS PLAT WAS FIRST SUBMITTED TO THE CITY PLANNING COMMISSION AND BY THE CITY PLANNING COMMISSION TO THE GOVERNING BODY OF THE CITY OF HAYS, KANSAS AND BY SUCH GOVERNING BODY DULY APPROVED ON April 28, 1960.

DOROTHY SODERBLOM  
 CITY CLERK



NOTE  
 ALL ARC MEASUREMENTS ARE RECORDED AS CHORD DISTANCES UNLESS OTHERWISE NOTED.

DRAWN BY D. J. B.		JOHN W. SMITH CONSULTING ENGINEER AND ASSOCIATES	
CHECKED BY J. W. S.		HAYS KANSAS	
DATE APRIL 1960	JOB NO. 204 - 60		
SKYLINE SECOND ADDITION		SHEET 1 OF 1	
HAYS		KANSAS	