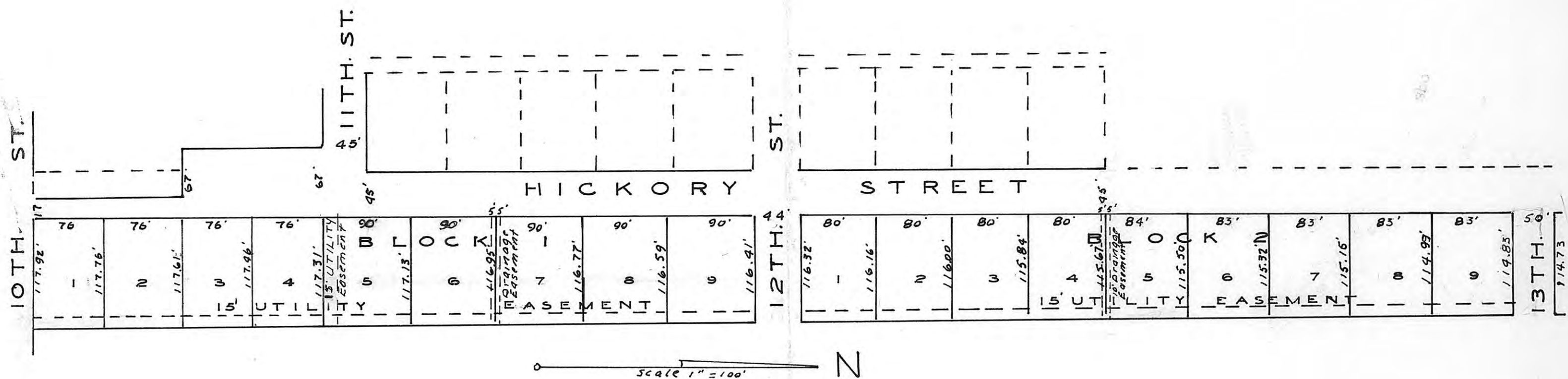


STRAMEL ADDITION

VICTORIA, KANSAS



LEGAL DESCRIPTION

A part of the Southwest $\frac{1}{4}$ Section 6, Township 14 South, Range 16 West of the 6th Principal Meridian, Ellis County, Kansas described as follows:
 Beginning at a point 45' East of the Northeast corner of Lot 1, Block 1, Cathedral Heights ~~Fourth Addition~~, City of Victoria, Kansas, thence North at right angles a distance of 466', thence East at right angles a distance of 114.73', thence South at an angle of $90^{\circ}7'$ a distance of 1584.02', thence West at an angle of $89^{\circ}53'$ a distance of 134.92', thence North a distance of 150' at an angle of 90° , thence West at an angle of 90° a distance of 67', thence North at an angle of 90° a distance of 154', thence East at an angle of 90° a distance of 67' thence North at an angle of 90° a distance of 814' to the place of beginning.

SURVEYOR'S CERTIFICATION

I hereby certify that I did survey the above described Tract and this plat is a true and correct copy of said survey.

Herbert H. Callon
 Herbert H. Callon 2-22-77 Date
 Licensed Land Surveyor

APPROVED BY

City Council, City of Victoria, Kansas.

Al Roklides
 Mayor

Cora Lou Ryan
 City Clerk

Attest

Date. March 8, 1977

DEDICATION

We the undersigned owners of the heretofore described tract, have caused the same to be subdivided into Lots and Blocks as shown on the Plat. The streets and easements are dedicated to the public for street and utility purposes.

Robert F. Stramel
 Robert F. Stramel

Phyllis A. Stramel
 Phyllis A. Stramel

NOTARY PUBLIC

State of Kansas ss
 County of Ellis

I certify that Robert F. Stramel and Phyllis A. Stramel are the same persons personally known to me to be the persons who signed the above dedication.

Herbert Callon
 Notary public

My Commission expires March 15, 1980

FILING RECORD

Recorded this 10 day March, 1977
 in the Ellis County Register of Deeds Office.
 Plat Book 24 Plat page 45.
 \$20.00 Pl
Virginia Sharp
 Register of Deeds.

