

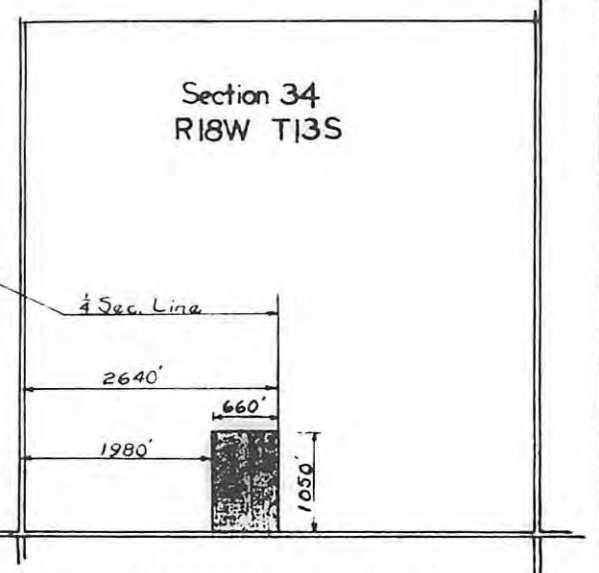
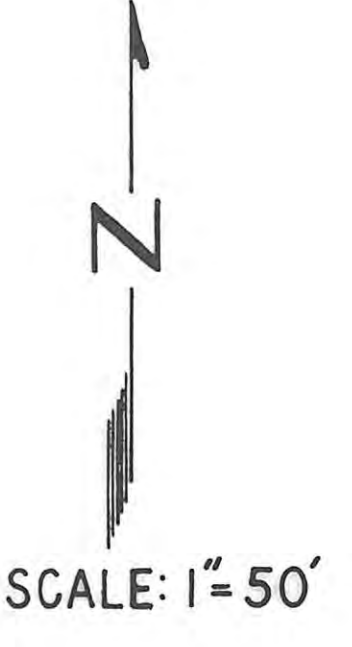
For Deed, See Book 117 of
 064 page 291

STATE OF KANSAS
 ELLIS COUNTY
 This instrument was filed for record

BOOK 5 - 1953

2:30 o'clock P.M. recorded in
 of Plot Page 23
 Fees \$80.00 *Edmund T. Fisher*
 Register of Deeds

REPLAT OF
 WASINGER HEIGHTS
 ADDITION
 HAYS, KANSAS



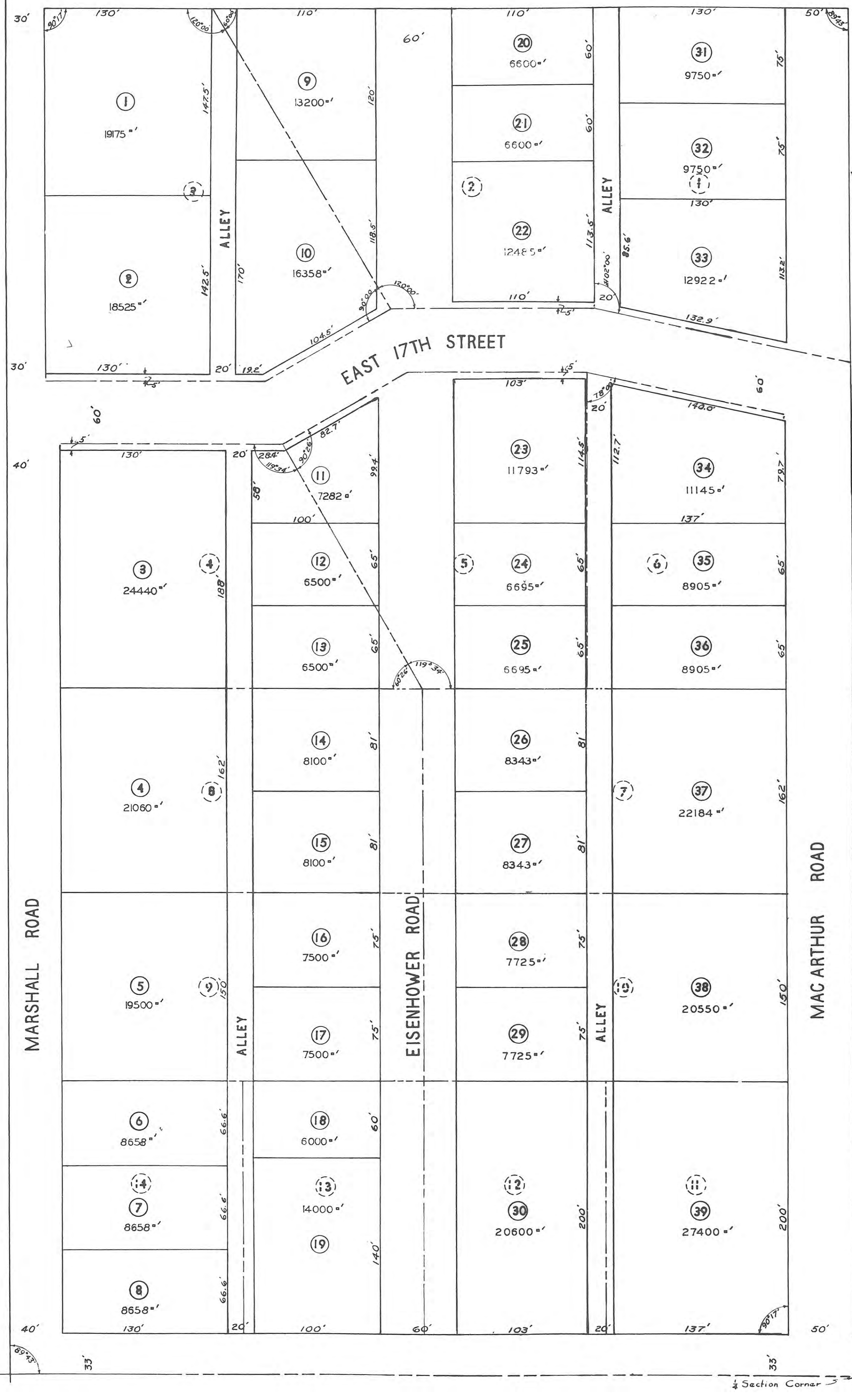
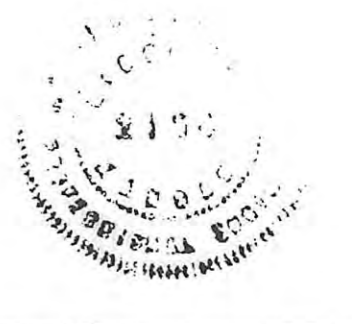
LOCATION MAP
 SCALE: 1" = 2000'

- LEGEND-**
- ORIGINAL LOT BOUNDARIES
 - REPLAT LOT BOUNDARIES
 - ORIGINAL LOT NUMBERS (1)
 - REPLAT LOT NUMBERS (2)

I CERTIFY THIS SURVEY TO BE
 TRUE AND CORRECT.

Harold A. Rothgeb
 HAROLD A. ROTHGEB
 LICENSED ENGINEER

HAROLD A. ROTHGEB
 ARCHITECTURAL & ENGINEERING
 SERVICE
 1203 FORT HAYS, KANSAS
 FEBRUARY 21, 1953



THIS IS A DIRECT PHOTOGRAPHIC REPRODUCTION OF THE OFFICIAL INSTRUMENT (RECORDED PLAT).
 THIS REPRODUCTION WAS MADE BY BUCHER & WILLIS, CONSULTING ENGINEERS, PLANNERS &
 ARCHITECTS IN JUNE 1979